

SURVEY FOR DEED DESCRIPTION
IN SEC. 11, T. 28S., R. 6W. W.M.
FOR JERRY SMITH
by BRUCE ROGERS
FEB, 1973
1" = 100'

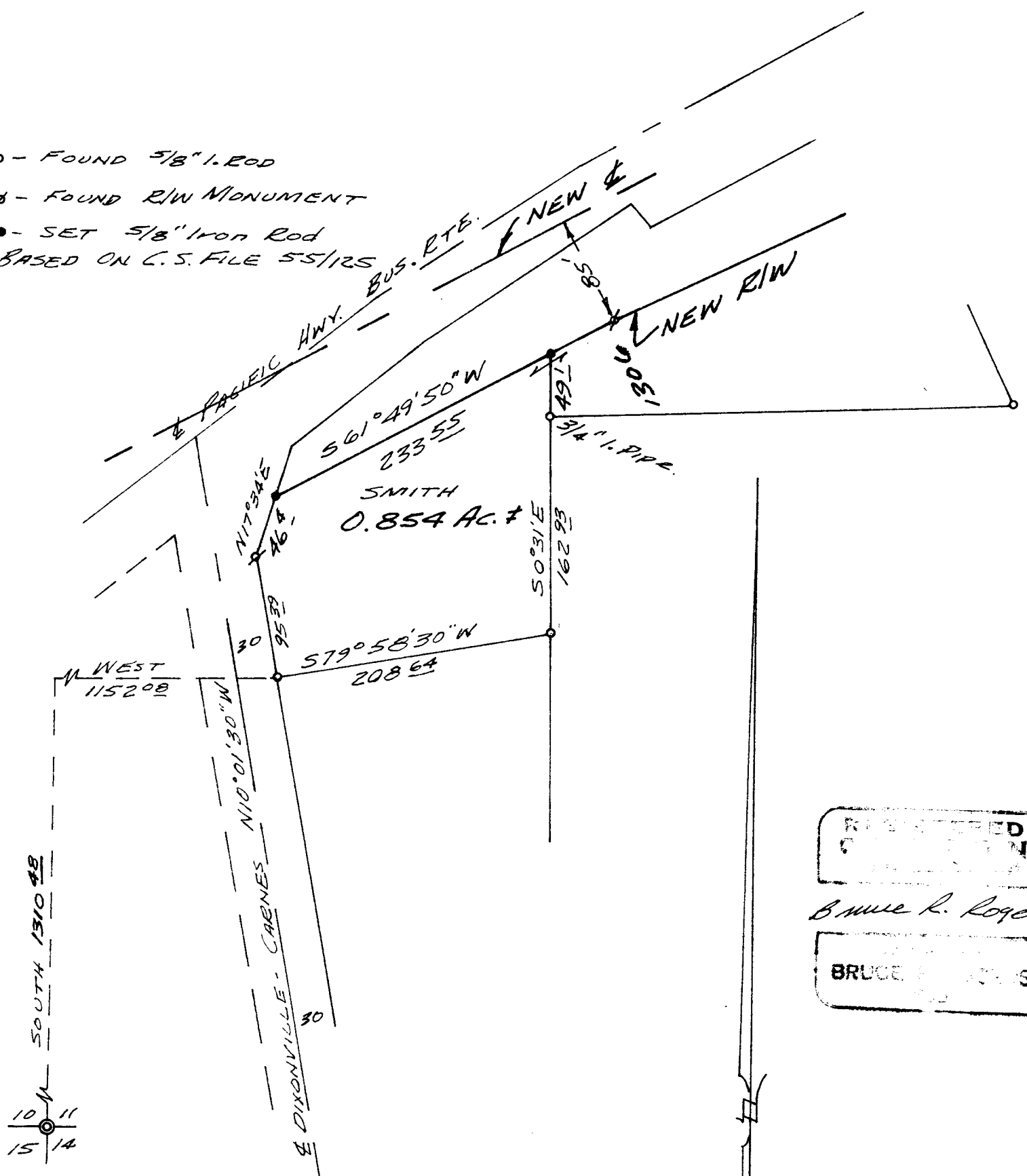
COUNTY SURVEYOR'S FILE DATA
DO NOT REMOVE FROM OFFICE

FILED *LL*
 RECEIVED *LL*

FEB 6 1973

COUNTY SURVEYOR
 DOUGLAS COUNTY, ORE.

- o - FOUND 5/8" I. ROD
- ø - FOUND R/W MONUMENT
- - SET 5/8" Iron Rod
 BASED ON C.S. FILE 55/125



REGISTERED
 SURVEYOR
 BRUCE R. ROGERS
 BRUCE R. ROGERS