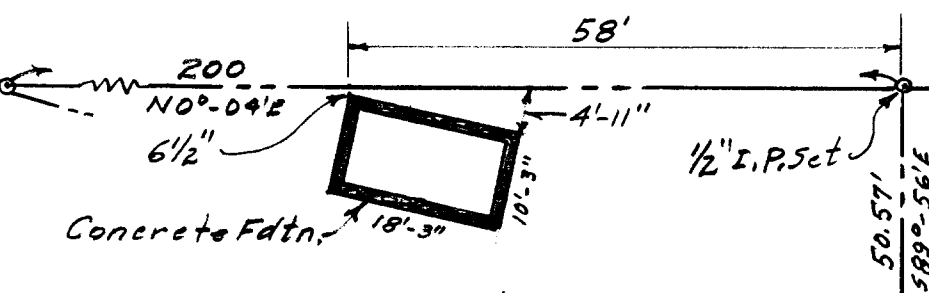
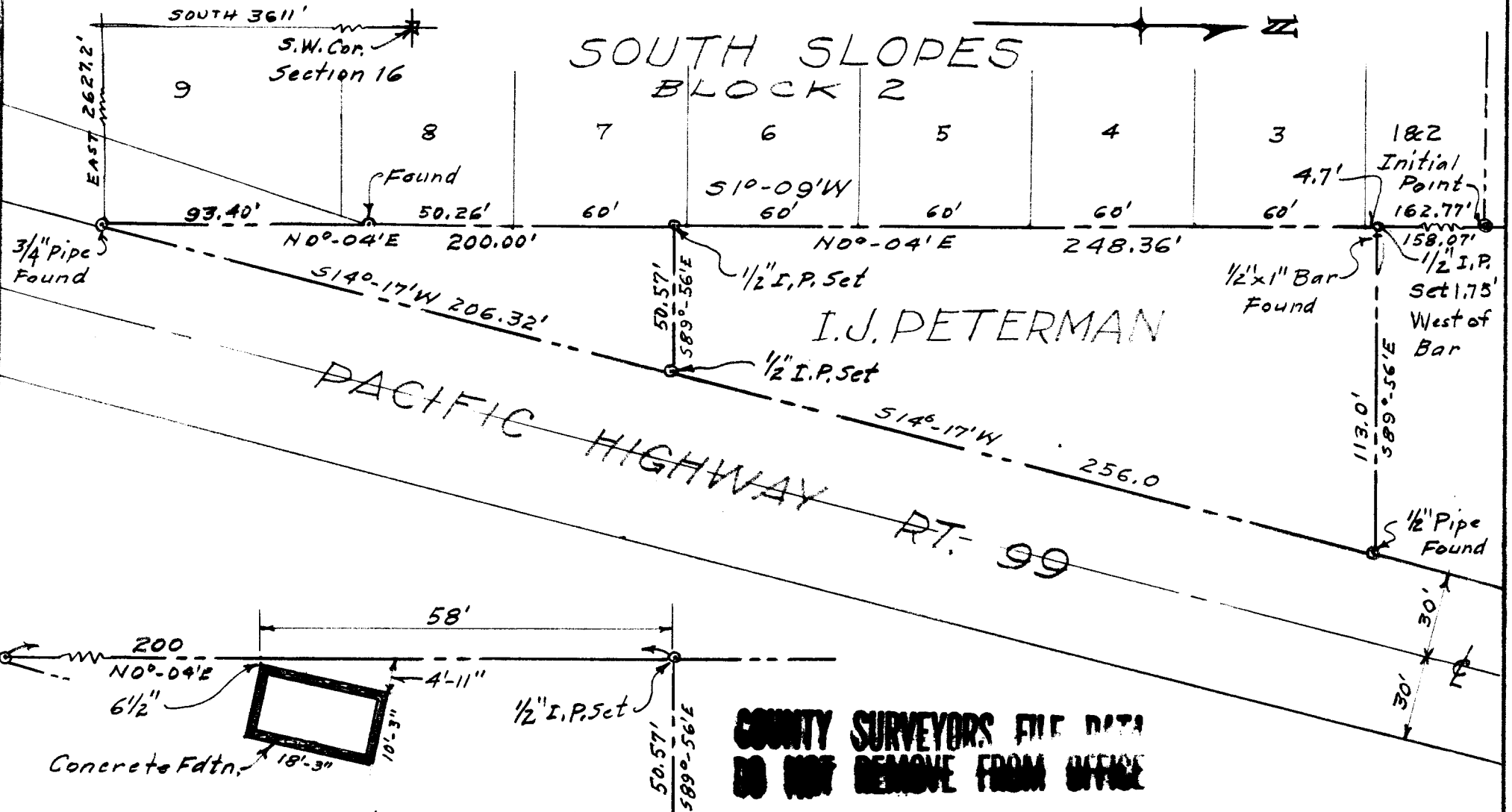


I.J. PETERMAN PARCELS · SECTION 21 · T285 · R6W · W.M. · DOUGLAS COUNTY · ORE.



**COUNTY SURVEYORS FILE DATA  
DO NOT REMOVE FROM OFFICE**

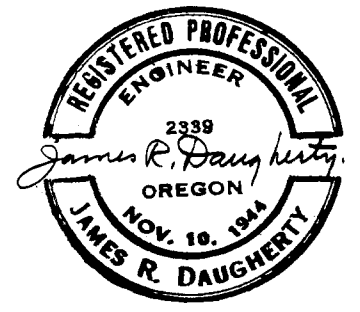
BUILDING LOCATION

SCALE 1" = 20'

Map Scale 1" = 50'

FILED *LD*  
RECEIVED

SURVEYED & PLATTED BY OCT 1 1972  
**JAMES R. DAUGHERTY**  
 COUNTY SURVEYOR  
 CIVIL-SANITARY ENGINEER DOUGLAS COUNTY, ORE.  
 ROSEBURG · ORE.



May 2, 1955

FILED BY BAUGHMAN *LD*

C. S. File No. 55/269-2