

FILED
RECEIVED

OCT 1 11972

COUNTY SURVEYOR
DOUGLAS COUNTY, ORE.

BASED ON SURVEY BY DAUGHERTY

SURVEY TO SET PROPERTY CORNERS

SITUATE IN SECTION 21, T.28S., R.6W.W.M.

FOR: DALLAS HORN
BY: BAUGHMAN SURVEYING SERVICE

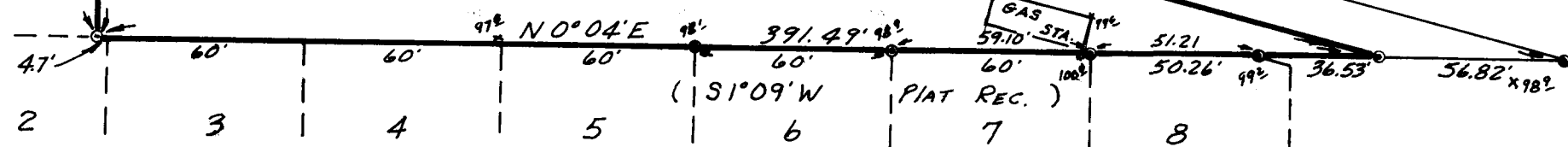
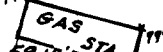
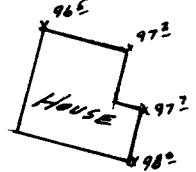
OCTOBER 1972

SCALE: 1" = 50'

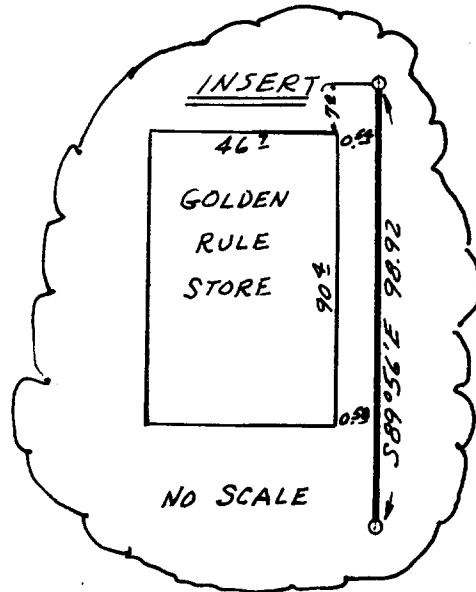
COUNTY SURVEYORS FILE DATA
DO NOT REMOVE FROM OFFICE

HOPPLE
TRACTS

PACIFIC HWY. 99



AMENDED PLAT - SOUTH SLOPES



Alan S. Baughman

○ — SET 5/8" I. ROD
● — FOUND I. PIPE

EAB