

COUNTY SURVEYORS FILE DATA

DO NOT REMOVE FROM OFFICE

T. 23-5 Sec. 3

SURVEY IN BLOCK 11, TOWN OF YONCALLA

Surveyed for Housing Authority of Douglas County

Surveyed by Victor M. McLind

September 1972

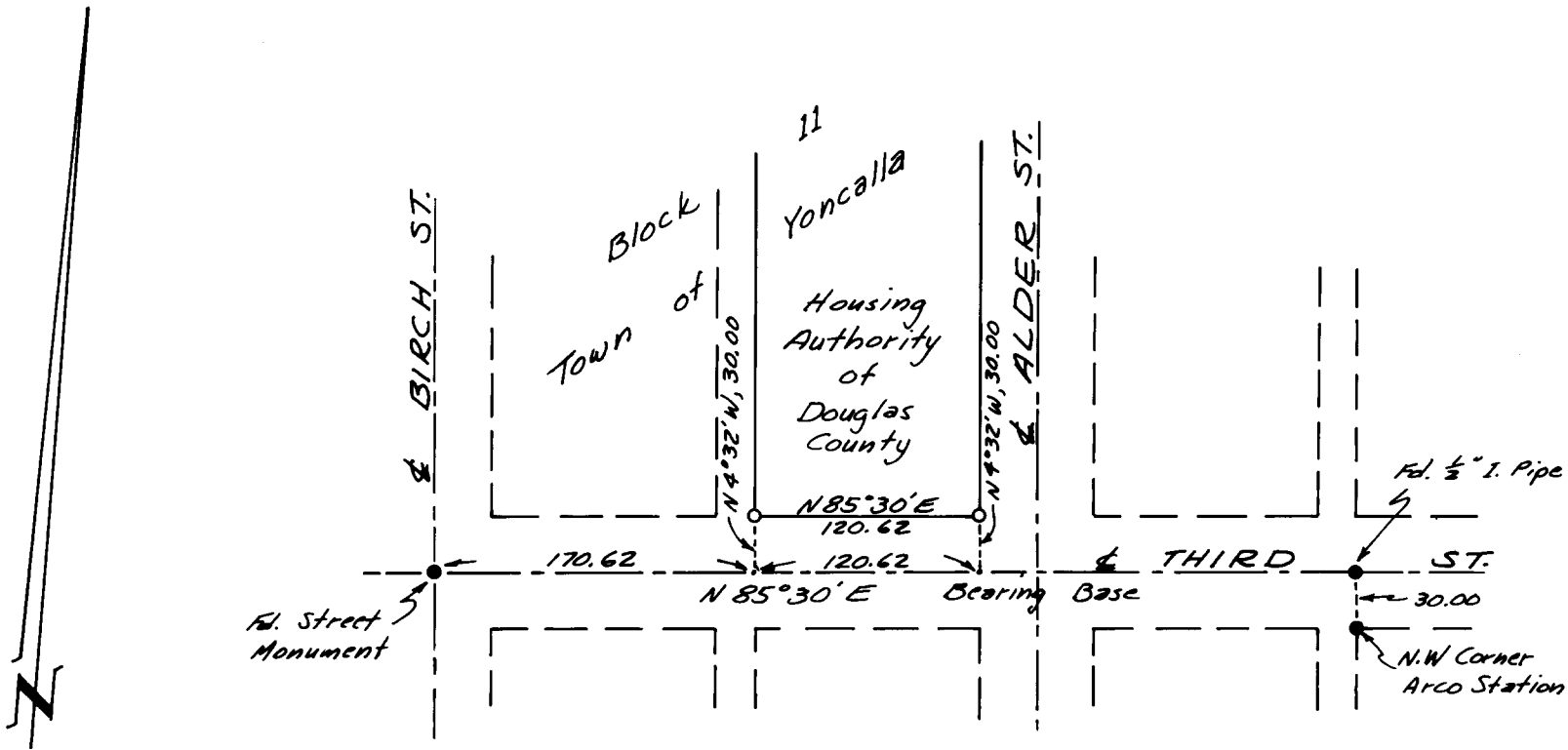
Scale: 1" = 100'

FILED
RECEIVED

OCT 10 1972

COUNTY SURVEYOR
DOUGLAS COUNTY, ORE.

o ~ Indicates Set $\frac{5}{8}$ " Brass Rod in Concrete



REGISTERED
PROFESSIONAL
LAND SURVEYOR

Victor M. McLind

OREGON
JULY 17, 1970
VICTOR M. MCLIND
934