

SURVEY IN SECTIONS 29 & 30, T30S, R3W, W.M.

Surveyed for Phil Washburn and Robert Murray by Victor M. McLind

October 1972

Scale: 1" = 200'

COUNTY SURVEYORS FILE DATA
DO NOT REMOVE FROM OFFICE

~ Indicates Set $\frac{5}{8}$ " Iron Rod
~ Indicates Found $\frac{5}{8}$ " Iron Rod

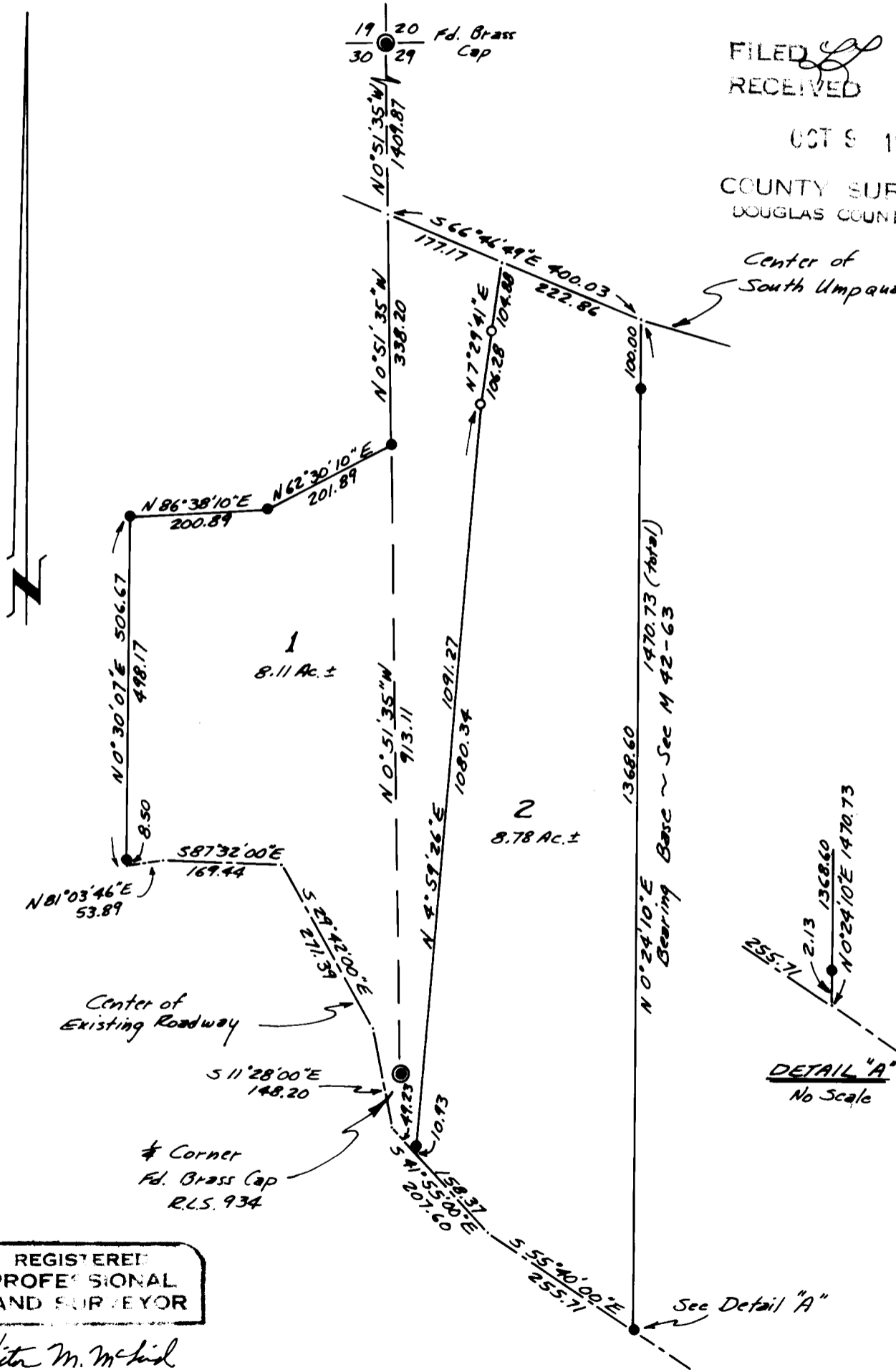
Note: The purpose of this survey is to change the position of the line between tracts 1 and 2 on M 42-63

FILED
RECEIVED

OCT 9 1972

COUNTY SURVEYOR
DOUGLAS COUNTY, ORE.

Center of
South Umpqua River



REGISTERED
PROFESSIONAL
LAND SURVEYOR

Victor M. McLind

CIVIL ENGINEER
JULY 11, 1970
VICTOR M. MCLIND
934