

SURVEY FOR DEED DESCRIPTION
 IN SECTION 14, T.26S., R.4W.W.M.
 FOR GILBERT SANTOS
 by BRUCE ROGERS

OCT., 1972
 1" = 100'

COUNTY SURVEYORS FILE DATA
 DO NOT REMOVE FROM OFFICE

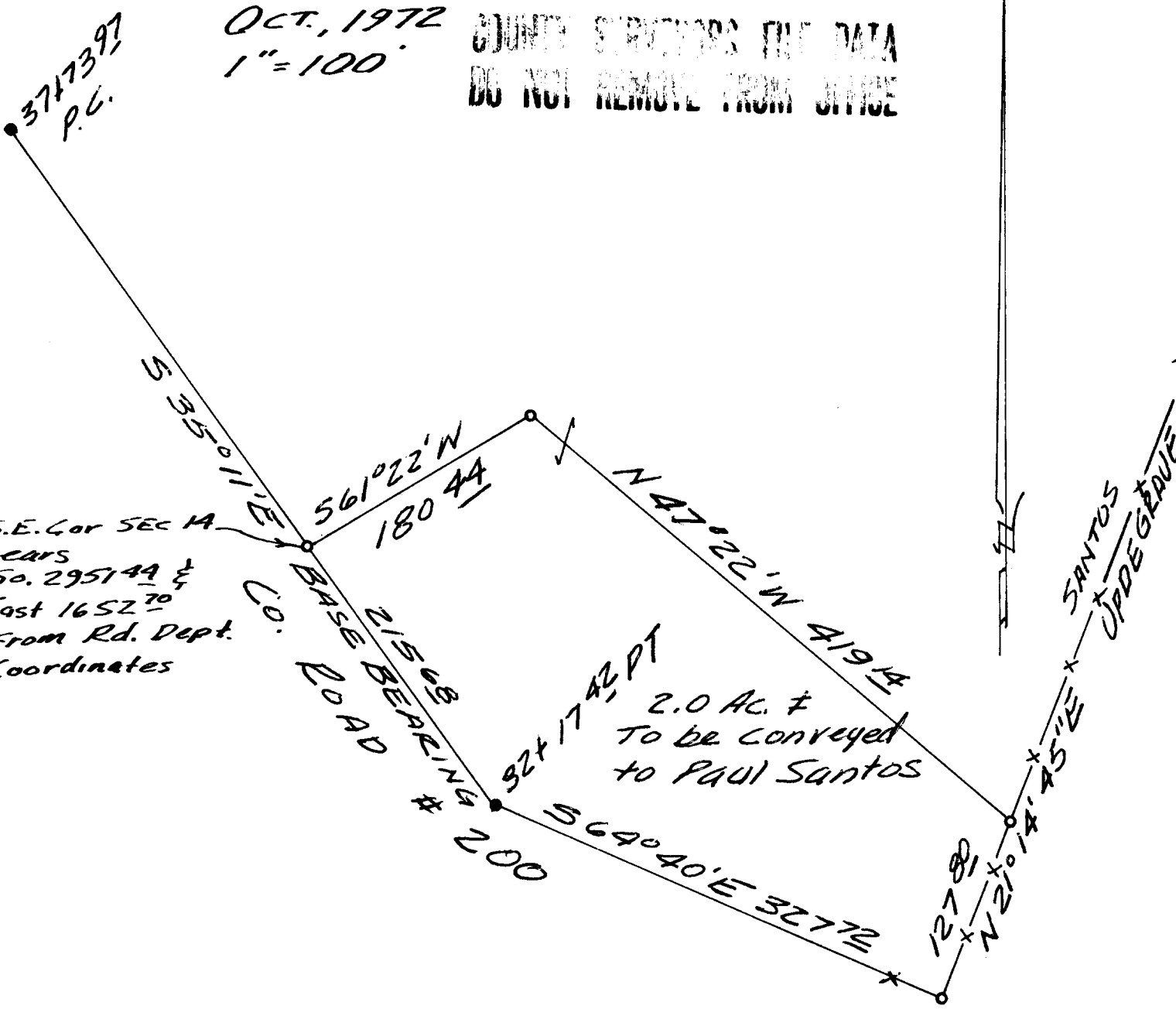
FILED *[Signature]*
 1972

OCT 6 1972

COUNTY SURVEYOR,
 DOUGLAS COUNTY, ORE.

3747397
 P.C.

S.E. Cor SEC 14
 bears
 So. 2951.44' &
 East 1652.70'
 From Rd. Dept.
 Coordinates



REGISTERED
 PROFESSIONAL
 SURVEYOR

Bruce Rogers

BRUCE R. ROGERS
 680

- o - SET 5/8" Iron Rod
- - COUNTY R/W PINS