

# SURVEY TO SET PROPERTY CORNERS ARCO OIL BULK STATION

TOWNSHIP 27 SOUTH RANGE 6 WEST W.M. SECTION 13

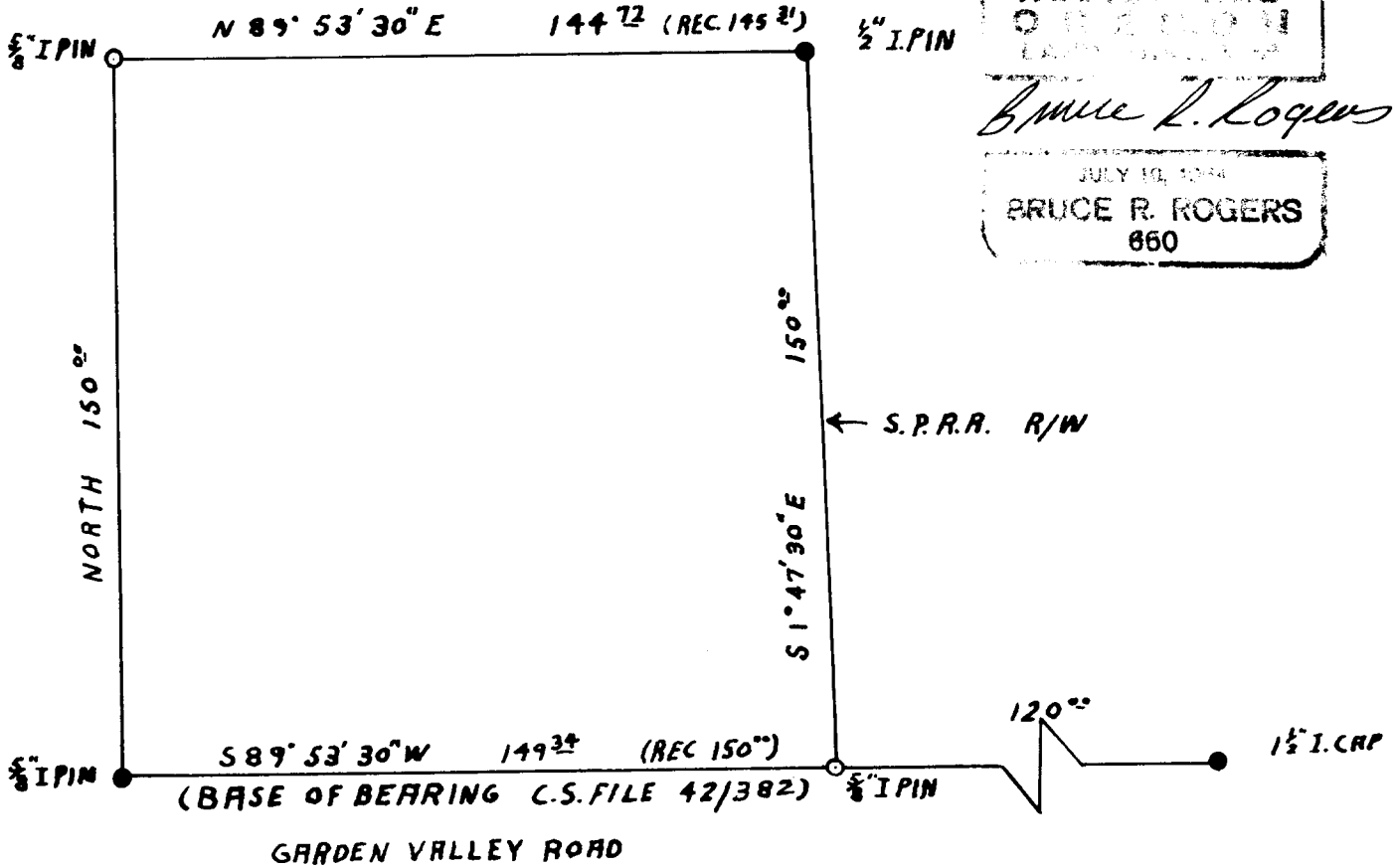
SURVEYED BY BRUCE ROGERS  
AUG 1972

SCALE 1" = 40'

- = PINS FD.
- = PINS SET



COUNTY SURVEYOR'S FILE DATA  
DO NOT REMOVE FROM OFFICE



REGISTERED  
 PROFESSIONAL  
 LAND SURVEYOR  
*Bruce R. Rogers*  
 JULY 10, 1964  
 BRUCE R. ROGERS  
 860

FILED *[Signature]*  
RECEIVED 27

AUG 2 1972

COUNTY SURVEYOR  
DOUGLAS COUNTY, ORE.