

SURVEY FOR DEED DESCRIPTION
IN THE S. ~~1/4~~ ^{1/2} 1/4 of SEC. 1, T. 24 S., R. 5 W. W. M.
FOR KNIGHT REALTY

by BRUCE ROGERS

JUNE, 1972

1" = 500'

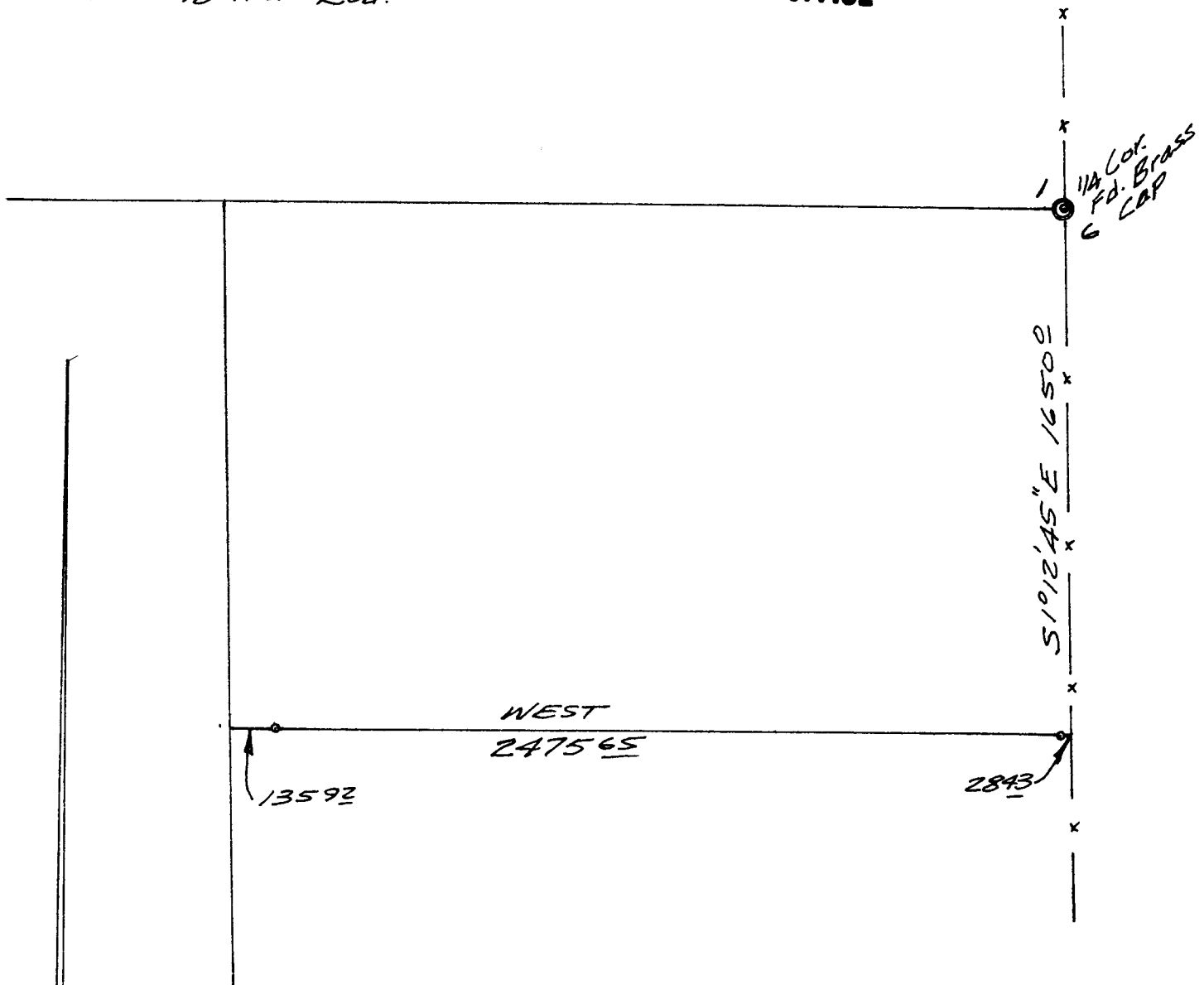
FILED *LL*
RECEIVED

JUN 30 1972

COUNTY SURVEYORS FILE DATA
DO NOT REMOVE FROM OFFICE

COUNTY SURVEYOR
DOUGLAS COUNTY, ORE.

o - Set 5/8" Iron Rod.



REGISTERED
COURT REPORTER
1972

Bruce L. Rogers

BRUCE R. ROGERS
#50