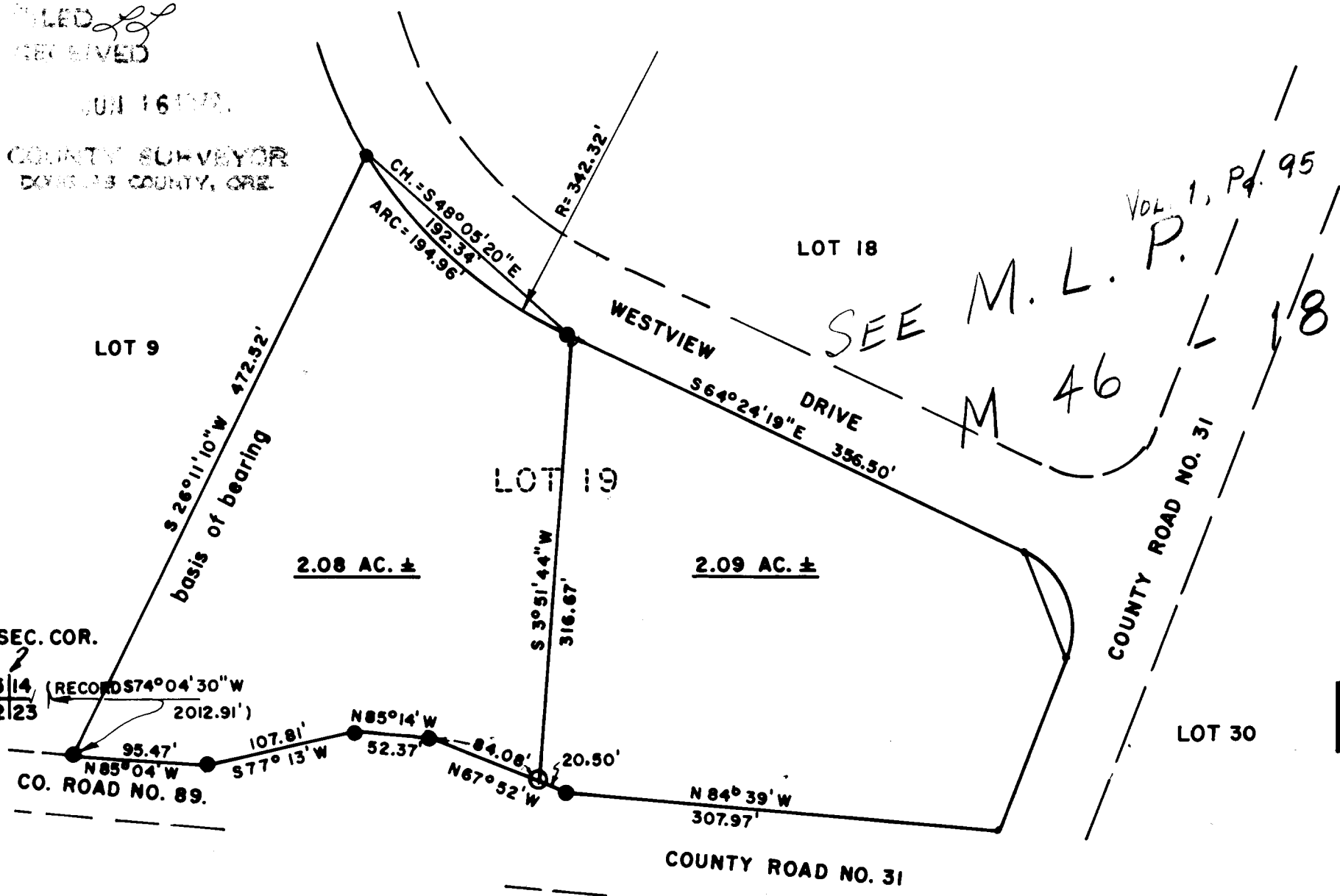


FILED
RECEIVED
JUN 16 1972
COUNTY SURVEYOR
DOUGLAS COUNTY, ORE.



**COUNTY SURVEYORS FILE DATA
DO NOT REMOVE FROM OFFICE**
SURVEY TO DIVIDE LOT 19 OF DEL RIO
RANCH ESTATES IN SECTION 14, T.26 S.,
R.6 W., W.M.
FOR GENE LACY, ROSEBURG, OREGON
BY HAROLD L. BALL, CIVIL ENGINEER
MAY, 1972

APPROVALS

BY ORDER OF THE DOUGLAS COUNTY
PLANNING COMMISSION APPROVED _____, 1972

William C. Stille 6-13-72
CHAIRMAN DATE

Francis L. Ingram 6-16-72
COUNTY SURVEYOR DATE



LEGEND

- 5/8" IRON ROD SET
- 3/4" IRON ROD FOUND



SEE M.L.P. M 46 - 18

C. S. File No. 55/255-4