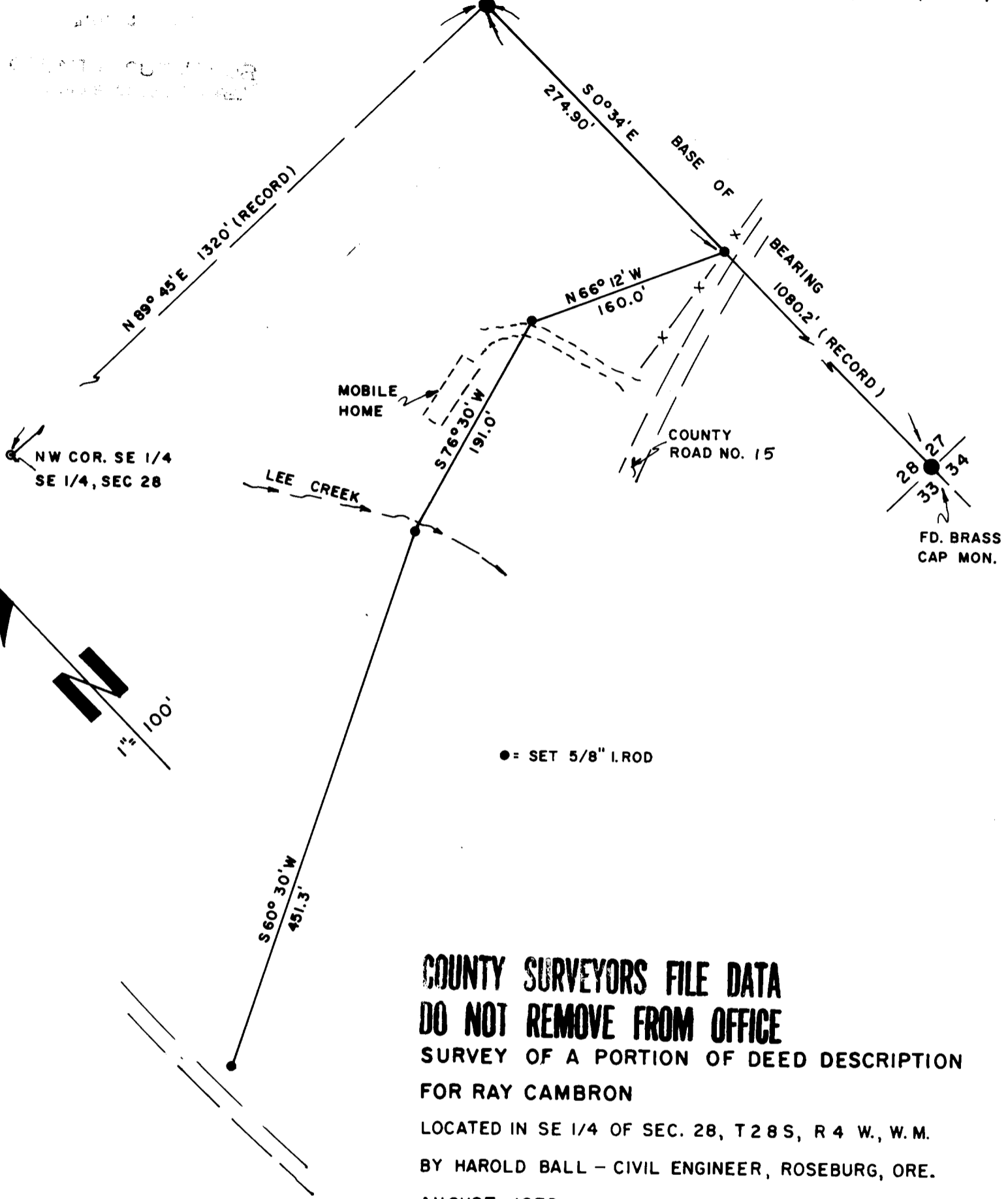


RECEIVED
 COUNTY SURVEYORS
 OFFICE

FD. BRASS CAP MON.
 NE COR., SE 1/4, SE 1/4, SECTION 28, T 28 S, R 4 W, W.M.



**COUNTY SURVEYORS FILE DATA
 DO NOT REMOVE FROM OFFICE**
 SURVEY OF A PORTION OF DEED DESCRIPTION
 FOR RAY CAMBRON
 LOCATED IN SE 1/4 OF SEC. 28, T 28 S, R 4 W, W.M.
 BY HAROLD BALL - CIVIL ENGINEER, ROSEBURG, ORE.
 AUGUST, 1972

