

COUNTY SURVEYORS FILE DATA

DO NOT REMOVE FROM FILE

SURVEY TO SET PROPERTY CORNERS

IN SECTION 6, T.27S., R.5W., W.M. FOR GODWIN

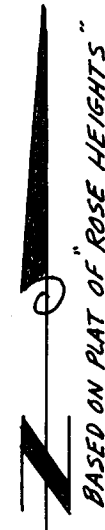
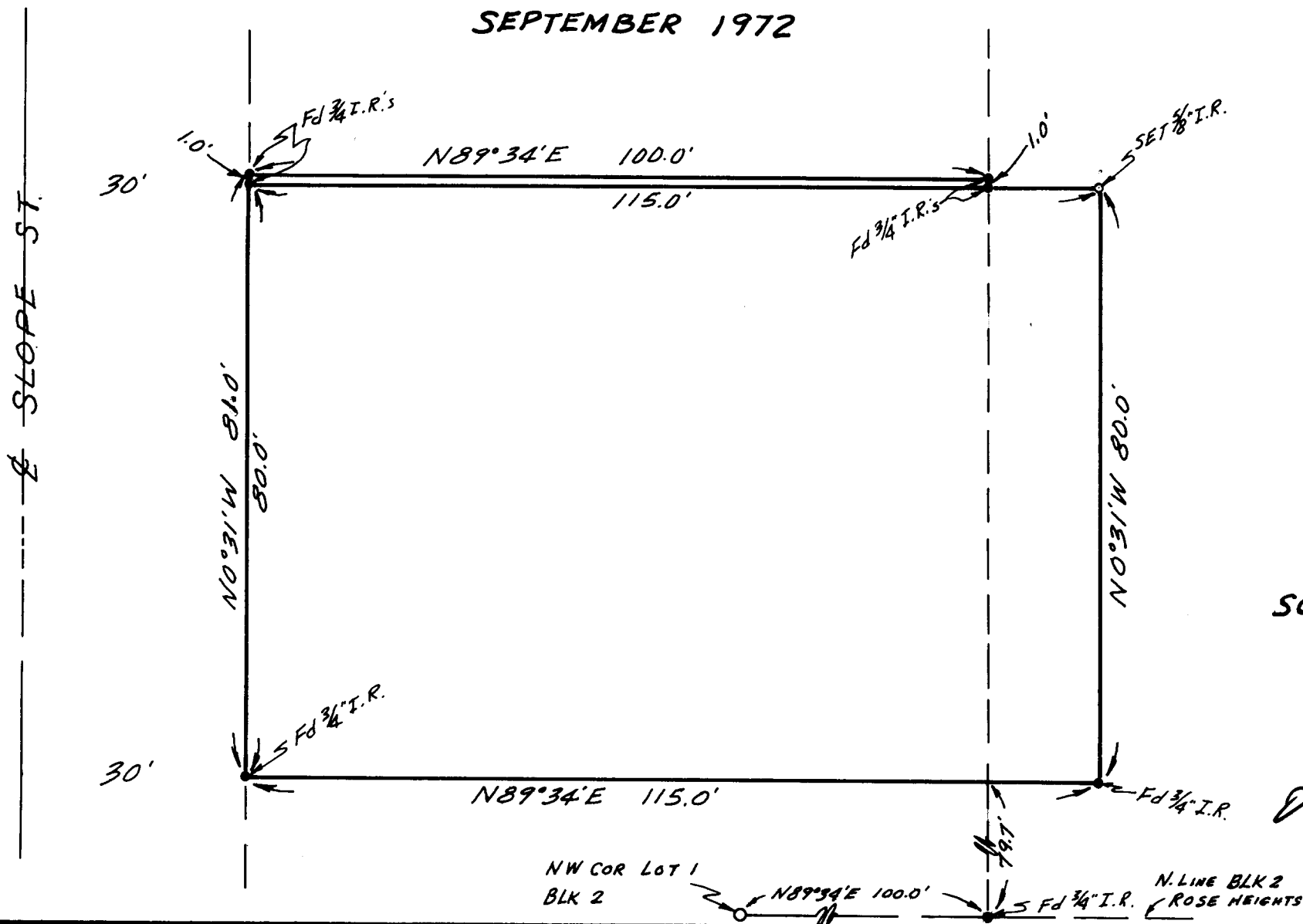
BY BAUGHMAN SURVEYING SERVICE

SEPTEMBER 1972

FILED
RECEIVED

SEP 26 1972

COUNTY SURVEYOR
DOUGLAS COUNTY, ORE.



SCALE: 1" = 20'

REGISTERED
PROFESSIONAL
LAND SURVEYOR

Glenn S. Baughman

OREGON
JULY 14, 1961
GLENN S. BAUGHMAN
536

E.A.B.