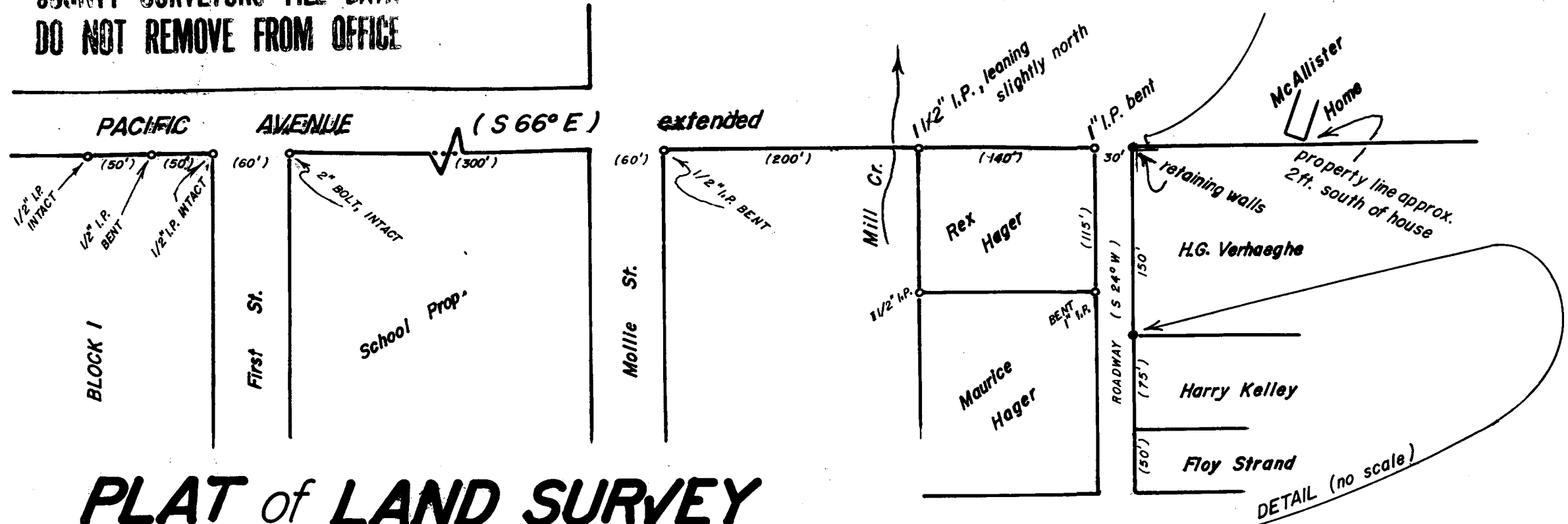


COUNTY SURVEYORS FILE DATA
DO NOT REMOVE FROM OFFICE



PLAT of LAND SURVEY

in the SW 1/4, NW 1/4, Sec. 4, T. 33 S., R. 6 W., W.M.

for: Mr. H. G. Verhaeghe, Glendale, Ore.
by: Ronald A. Brandt, Glendale, Ore.
date: April 7-8, 1972

DATUM:

SCALE: 1 in. = 100 ft.

- Monuments found — •
- set — • 1" x 30" iron rods, flush
- Parenthesis () means of record
- Power Pole — ♦

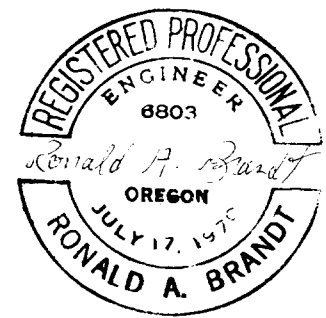
TOP SE CORNER OF THE
HAGER HOME CEMENT
STEPS
N 63° 47' W, 378'

POWER POLE, N 20° E, 12.7' FROM IRON ROD
8.6' ASPHALT D/W
VERHAEGHE
KELLEY
APPROX. 11'
POWER POLE SERVICE TO
KELLEY PROP.

FILED
RECEIVED

JUL 17 1972

COUNTY SURVEYOR
DOUGLAS COUNTY, ORE.



55/248-1A

ADDITIONS AND
SEE CORRECTED SURVEY FILED 6/26/72
IN SAME FILE C. S. FILE NO. 55/248

Handwritten signature

April 13, 1972

Ronald A. Brandt, P.E. 6803
P.O. Box 427,
Glendale, Oregon 97442

NARRATIVE OF SURVEY for establishing

the westerly corners of a tract of land

located in the SW $\frac{1}{4}$, NW $\frac{1}{4}$, Sec. 4, T. 33 S., R. 6 W., W.M.

Survey for Henry G. Verhaeghe of Glendale, Oregon
as follows:

PURPOSE : to establish and monument two corners on a tract, the points defined as follows-

- 1) a point on the easterly extension of the south boundary of Pacific Ave., Glendale, Ore., said point being 370.0 ft., S. 66° E. (bearing of record) from the intersection of the southerly bdy. of Pac. Ave. with the easterly bdy. of Mollie St.;
- 2) a point 150.0 ft. , S. 24° W. (bearing of record) from point number 1 above;

METHOD : to verify the positions of monuments found and to use those positions in searching for monuments not found or said to be destroyed all for establishing the points in question; basis of bearing is that of record for the City of Glendale;

EQUIPMENT : this work conducted with a 30 sec. Gurley Transit, 200 ft. steel tape, and the City of Glendale metal detector;

PROCEEDURE, MONUMENTS and RESULTS : the survey proceeded using monuments on the southerly boundary of Pac. Ave. indicated on Mr. Wenderoths plat of land survey for Maurice Hager, Sept. 27, 1966 as follows- setting up initially over the NW'ly Hager corner ($\frac{1}{2}$ " I.P.) and B.S. to the NW'ly Sch. Prop. corner (2" bolt) the following were found:

- 1) a buried $\frac{1}{2}$ " I.P. at the NE'ly corner blk. 1, on line;
- 2) an **exposed** $\frac{1}{2}$ " I.P. on the south bdy. Pac. Ave. and common to lots 1 & 2, blk. 1, the pipe having been knocked off line by lawn mowing;
- 3) a buried $\frac{1}{2}$ " I.P. on the south bdy. Pac. Ave. and common to lots 2 & 3, blk. 1, on line;
- 4) a buried $\frac{1}{2}$ " I.P. found by measuring 200 ft. from the transit along the line of B.S., said pipe severly bent during sewer line work since Mr. Wenderoths survey, however, checking in the 200 ft. measurement (point being the SE'ly corner of Mollie-Pacific intersection);

then prolonging this line of sight easterly to the NE'ly Hager corner (1" I.P. bent severly north by a car, however, digging out around the pipe revealed the initial position) was found in agreement with this line projected easterly; this line was extended across the 30ft. roadway where the NW'ly Verhaeghe corner was later set; this extended line of Pac. Ave. was noted as being approx. 2 ft. south from the SE'ly corner of the Walter McAllister home just under the eaves at that corner of the house and said line also being approx. 1 ft. north of the Verhaeghe retaining wall, but not parallel to it;

(CONTINUED NEXT PAGE)

FILED
RECEIVED

APR 17 1972

COUNTY SURVEYOR
DOUGLAS COUNTY, ORE.

CS 55/248-1b

C. S. File No. 55/248^{1b}

PROCEEDURE, MONUMENTS and RESULTS : (CONTINUATION) a right angle was turned from the point of the NW'ly Verhaeghe corner to search for monuments noted in H.W. Lawrences survey for Junior Davidson, April 11, 1957 and using a metal detector nothing was found indicating a monument in either possible vicinity, thus two points were monumented from the information just mentioned and information on the plat:

- 1) a point 370 ft., S. 66°E. on the projected southerly bdy. of Pacific Avenue from its point of intersection with the easterly bdy. of Mollie St.- set a 1"x 30" iron rod, driven flush;
- 2) a point 150 ft., S. 24°W. from point "1" above- set a 1"x 30" iron rod driven flush through asphalt from which bears N. 63°47' W., 37.8 ft. the SE'ly top corner of the cement steps of the Maurice Hager home;

INDIVIDUALS and DATES: this survey began on April 7 and monuments were set on April 8, 1972 with Barry Hubler, Maurice and Rex Hager, Harry Kelley, and Floy Strand witnessing all or part of the work;

REFERENCES: Mr. Wenderoth's survey for Maurice Hager, Sept. 27, 1966;
Mr. Lawrence's survey for Junior Davidson, April 11, 1957; Douglas County Assessor's Office, Recorder's Office, and the Surveyor's Office;

COMMENTS: it has been assumed in this survey that the Wenderoth and Lawrence surveys were not in agreement since considerable differences in opinion exist among the owners as to the correct property line location; supporting the disagreements is that position of monuments set in this survey do not agree with a shrub line position between the Kelley and Strand properties; the Walter McAllisters, having lived in the area many years, maintain the Verhaeghe-Kelley property line was intended to bisect the asphalt driveway (the driveway was put in place by Junior Davidson after the Lawrence survey and likely covered the monument according to residents) whereas this survey using Wenderoth's work is certainly further south; evidence available was in support of Mr. Wenderoth's survey, one of his many surveys involving Pacific Avenue in Glendale, Oregon.



FILED
RECEIVED

APR 17 1972

COUNTY SURVEYOR
DOUGLAS COUNTY, ORE.

CS 55/248-1c S. File No. 55/248c