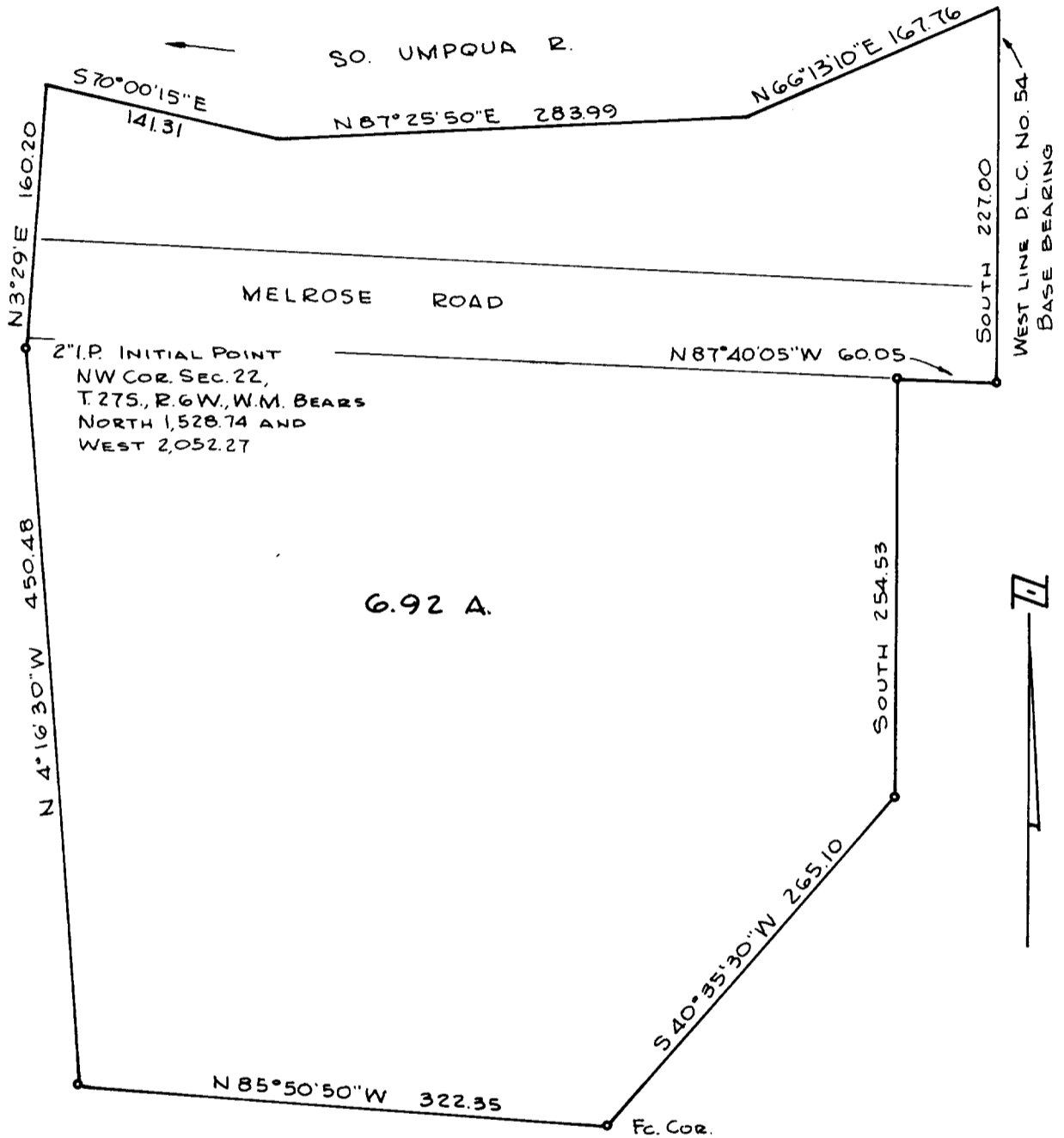


**SURVEY IN SECTION 22, T. 27 S., R. 6 W., W.M.
 SURVEYED FOR J. L. ALVES
 SURVEYED BY R. H. GEE - MARCH, 1969
 SCALE 1" = 100'**

**COUNTY SURVEYORS FILE DATA
 DO NOT REMOVE FROM OFFICE**



• DENOTES 5/8" I.R. SET

FILED
 RECEIVED

APR 1 1972

COUNTY SURVEYOR
 DOUGLAS COUNTY, OREGON

