

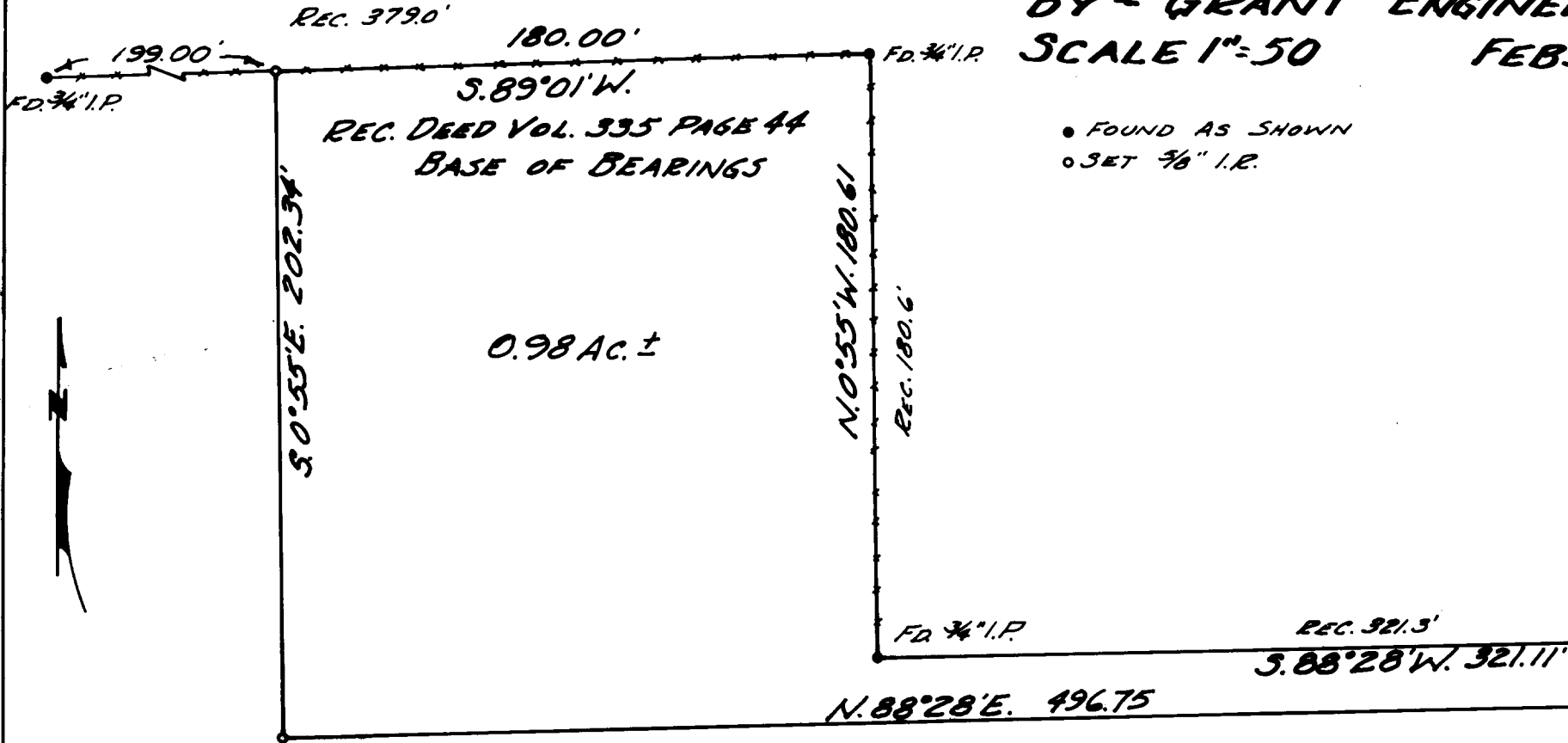
FILED *LL*  
RECEIVED

MAR 1 1972

COUNTY SURVEYOR  
DOUGLAS COUNTY, ORE.

COUNTY SURVEYORS FILE DATA  
DO NOT REMOVE FROM OFFICE

SURVEY FOR DEED DESCRIPTION  
IN LOT 31 TRACT 1 PLAT 1 R.H.O.T.  
IN SEC 6 T.27S., R.5W.W.M.  
FOR-FRANCIS D ENGLE  
BY-GRANT ENGINEERING  
SCALE 1"=50 FEB. 1972



● FOUND AS SHOWN  
○ SET 3/8" I.P.

