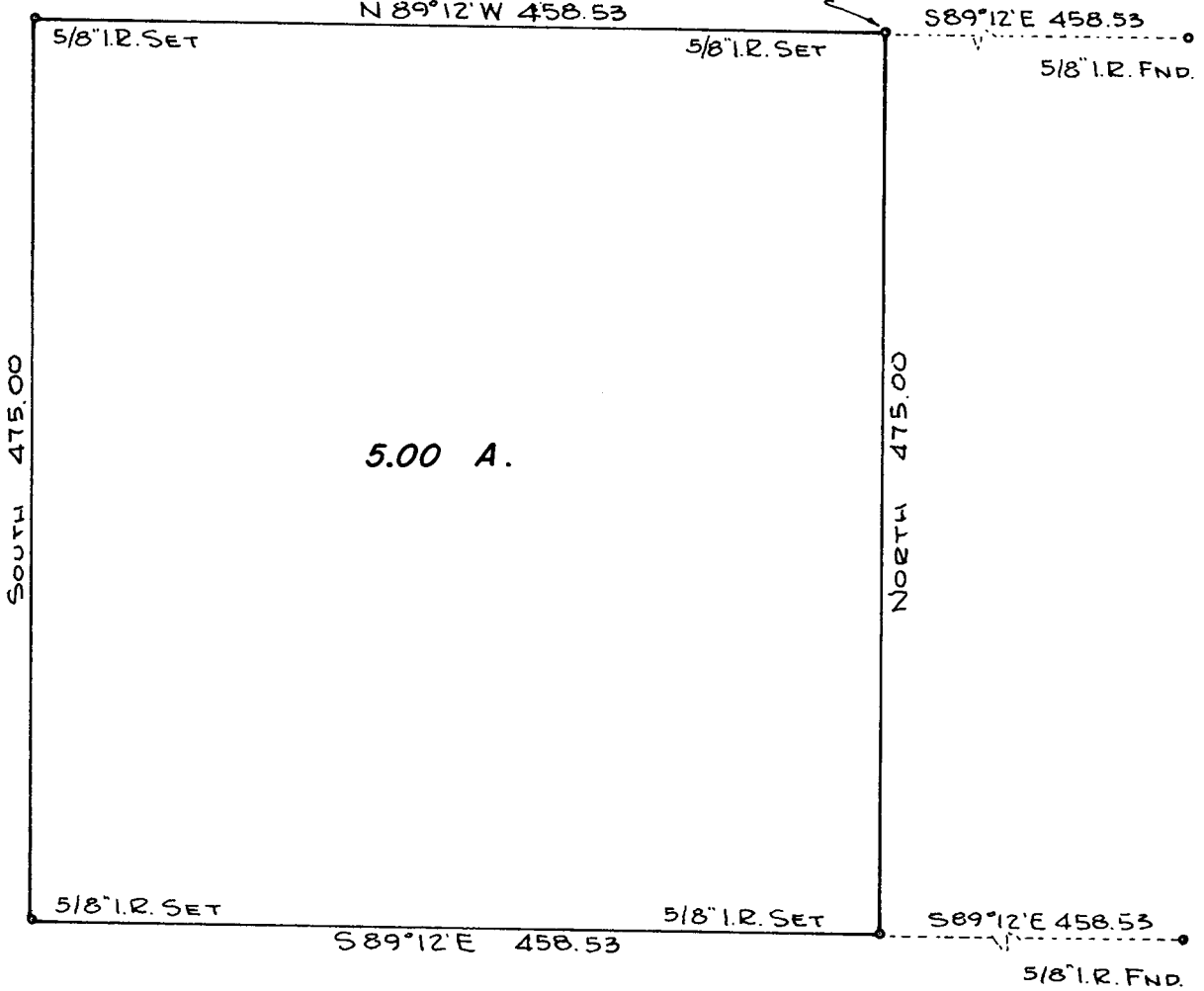


FILED  
RECEIVED 27

FEB 28 1972

COUNTY SURVEYOR  
DOUGLAS COUNTY, ORE.

INITIAL POINT  
SW COR T. SHERUM D.L.C. NO 42  
BEARS NORTH 678.23 & EAST 1625.83



BEARINGS BASED ON C.S. MAP FILE M 35-77

**SURVEY IN SECTION 19, T. 26 S., R. 3 W., W.M.  
SURVEYED FOR ARTHUR SWANSON  
SURVEYED BY R. H. GEE - FEBRUARY, 1972  
SCALE 1" = 100'**

**COUNTY SURVEYORS FILE DATA  
DO NOT REMOVE FROM OFFICE**

