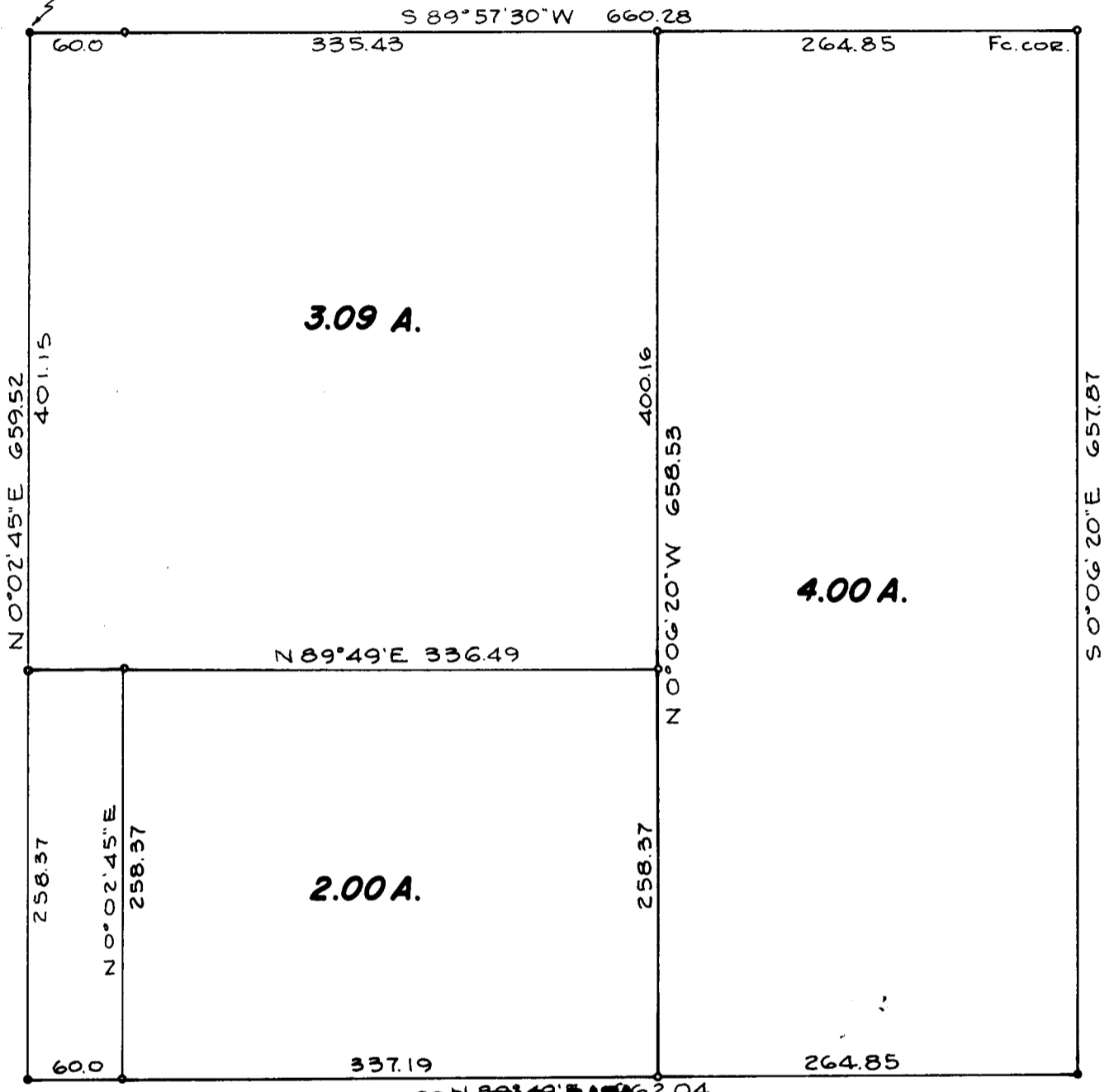


FILED  
RECEIVED

FEB 10 1972

COUNTY SURVEYOR  
DOUGLAS COUNTY, ORE.

INITIAL POINT  
WEST 1/4 COR SEC. 17, T. 26 S., R. 6 W., W.M.  
BEARS S 89° 57' 30" W 660.28



**COUNTY SURVEYORS' FILE DATA  
DO NOT REMOVE FROM OFFICE**

**SURVEY IN SECTION 17, T. 27 S., R. 6 W., W.M.  
SURVEYED FOR WALTER WHITE  
SURVEYED BY R. H. GEE - JANUARY, 1972  
SCALE 1" = 100'**

**COUNTY SURVEYORS' FILE DATA  
DO NOT REMOVE FROM OFFICE**

- DENOTES 5/8" I.R. FND.
  - DENOTES 5/8" I.R. SET
- BEARINGS BASED ON C.S. MAP FILE M 33-12

