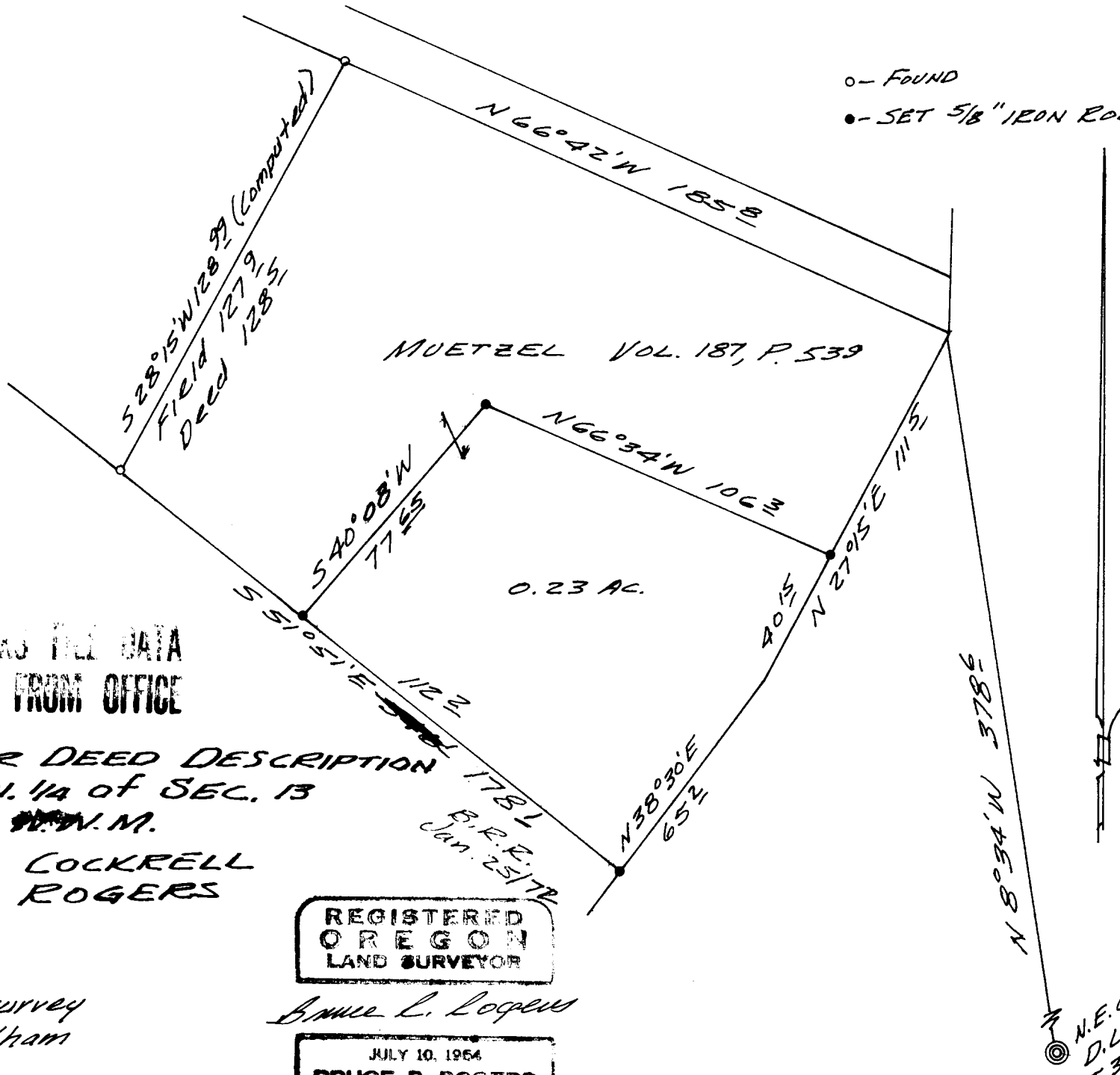


FILED
RECEIVED

JAN 24 1972

COUNTY SURVEYOR
DOUGLAS COUNTY, ORE.

o - FOUND
● - SET 5/8" IRON ROD



MUETZEL VOL. 187, P. 539

0.23 AC.

COUNTY SURVEYOR'S FILE DATA
DO NOT REMOVE FROM OFFICE

SURVEY FOR DEED DESCRIPTION
IN THE S.W. 1/4 OF SEC. 13
T. 30 S., R. 6 W. N.M.

for LARRY COCKRELL
by BRUCE ROGERS

JAN., 1972

1" = 40'

Based on a survey
by John Markham
C.S. 511136

178.1
B.R.R.
Jan. 25/72

REGISTERED
OREGON
LAND SURVEYOR

Bruce R. Rogers

JULY 10, 1964
BRUCE R. ROGERS
660

N.E. Cor. #47
D.L.C. #47
T. 30 S., R. 6 W.