

T. 25-S Sec. 17

SURVEY OF LOTS 10 & 11, BL. 2, OF SUN-DALE VILLAGE, ROSEBURG, ORE.

Surveyed for Pete Serafin Realty by Victor M. McLind

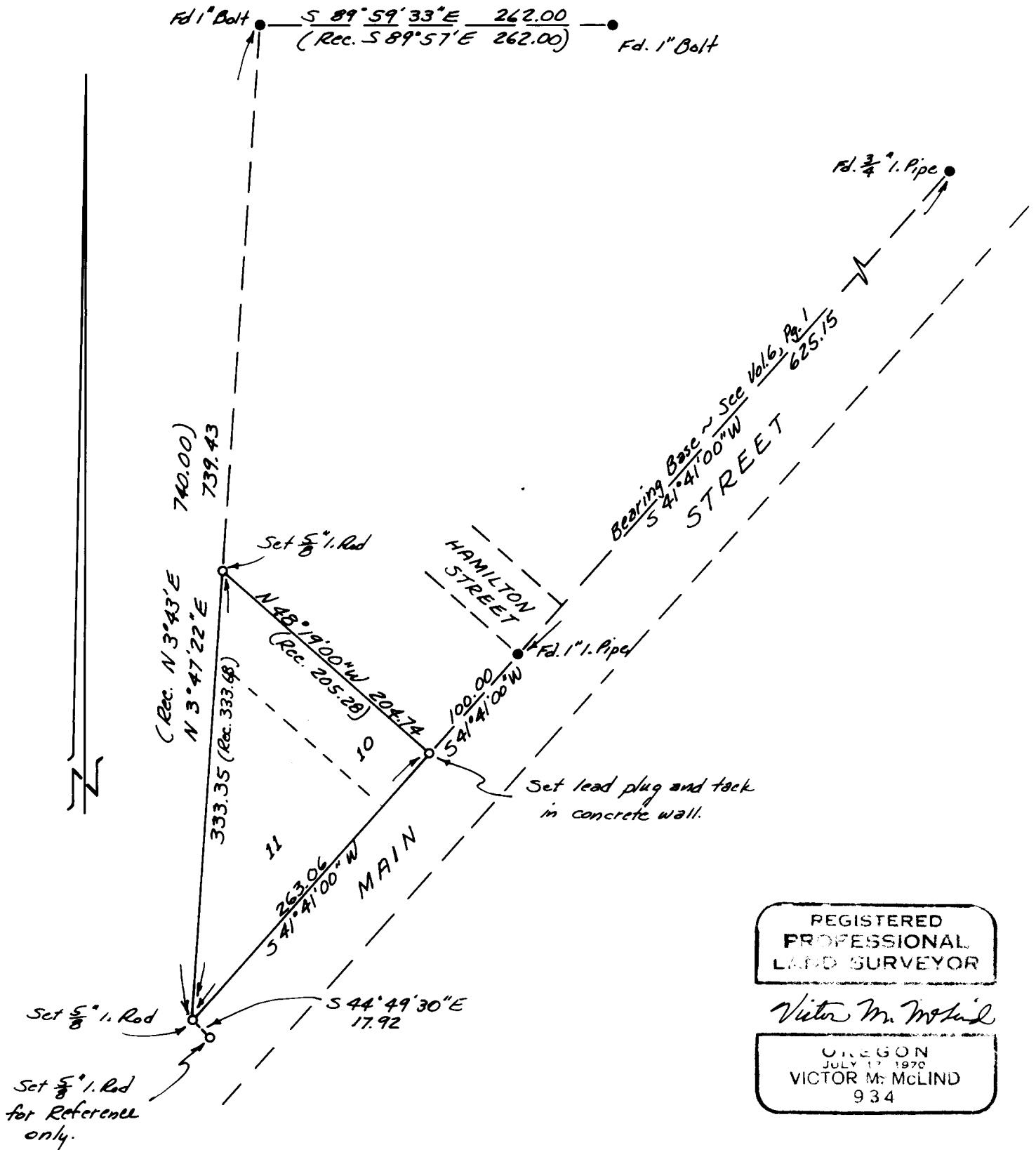
January 1972 **COUNTY SURVEYORS FILE DATA DO NOT REMOVE FROM OFFICE**

Scale: 1" = 100'

FILED *[Signature]*
RECEIVED

FEB 1 1972

COUNTY SURVEYOR
DOUGLAS COUNTY, ORE.



REGISTERED
PROFESSIONAL
LAND SURVEYOR

Victor M. McLind

OREGON
JULY 17 1970
VICTOR M. McLIND
934