

SURVEY IN LOT 7, BLOCK 2, PLAT "A"

S.L. & W. CO. T. 25 - 5 Sec. 116

SURVEYED FOR LESLIE WRIGHT BY VICTOR M. McLIND
 JANUARY 1972

SCALE: 1" = 100'

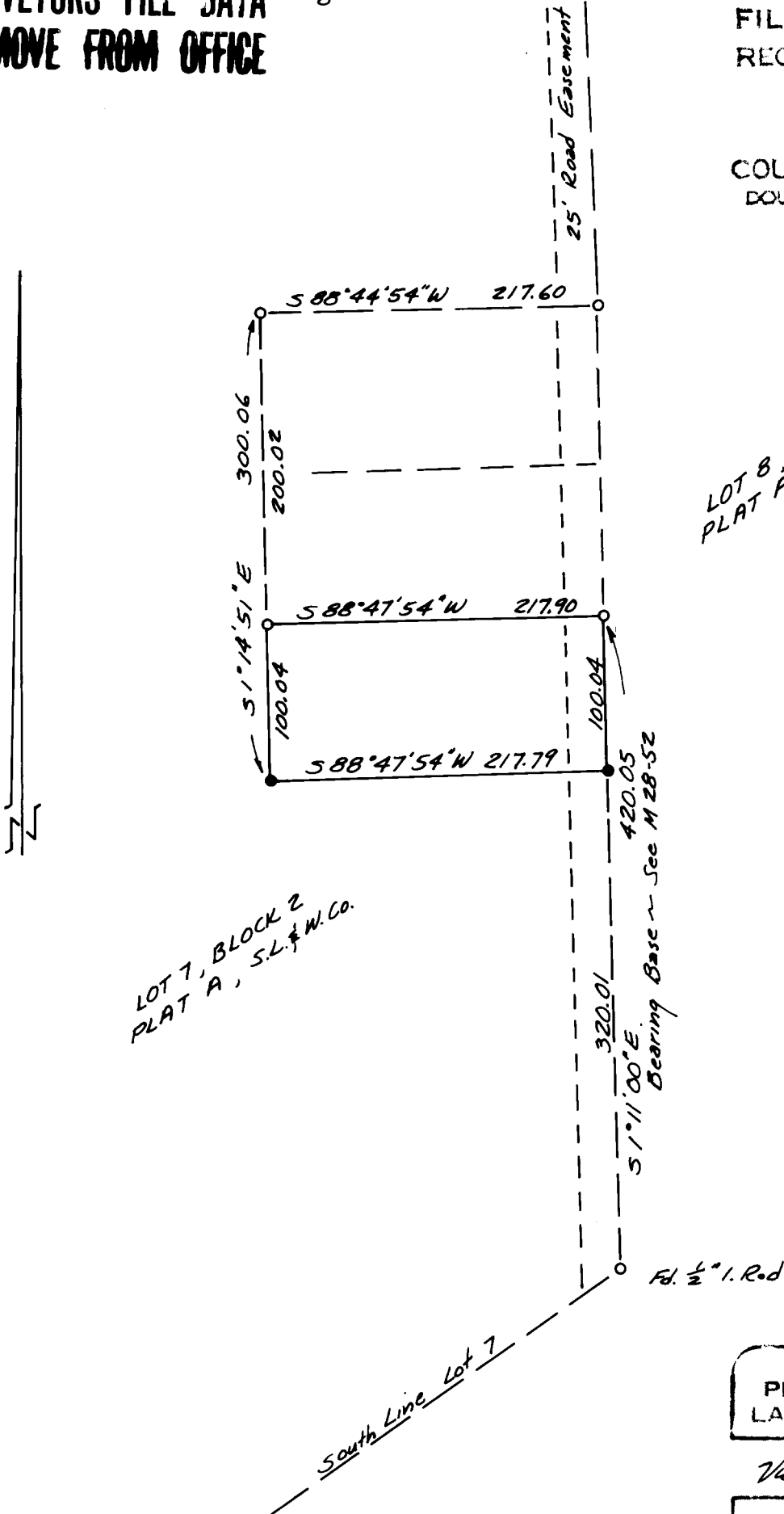
**COUNTY SURVEYORS FILE DATA
 DO NOT REMOVE FROM OFFICE**

o Fd. $\frac{5}{8}$ " I. Rod
 Set $\frac{5}{8}$ " I. Rod

FILED *[Signature]*
 RECEIVED

JAN 2 11 1972

COUNTY SURVEYOR
 DOUGLAS COUNTY, ORE.



LOT 8, BLOCK 2
 PLAT A, S.L. & W. Co.

LOT 7, BLOCK 2
 PLAT A, S.L. & W. Co.

Fd. $\frac{1}{2}$ " I. Rod

REGISTERED
 PROFESSIONAL
 LAND SURVEYOR

Victor M. McLind

VICTOR M. McLIND
 JULY 17 1879
 VICTOR M. McLIND
 534