

COUNTY SURVEYORS FILE DATA

DO NOT REMOVE FROM OFFICE

Survey in Section 14, T 26 S, R 6 W, W.M., Douglas County, Oregon

Surveyed for United Farm Agency by Victor M. McLind

DECEMBER 1971

SCALE: 1"=100'

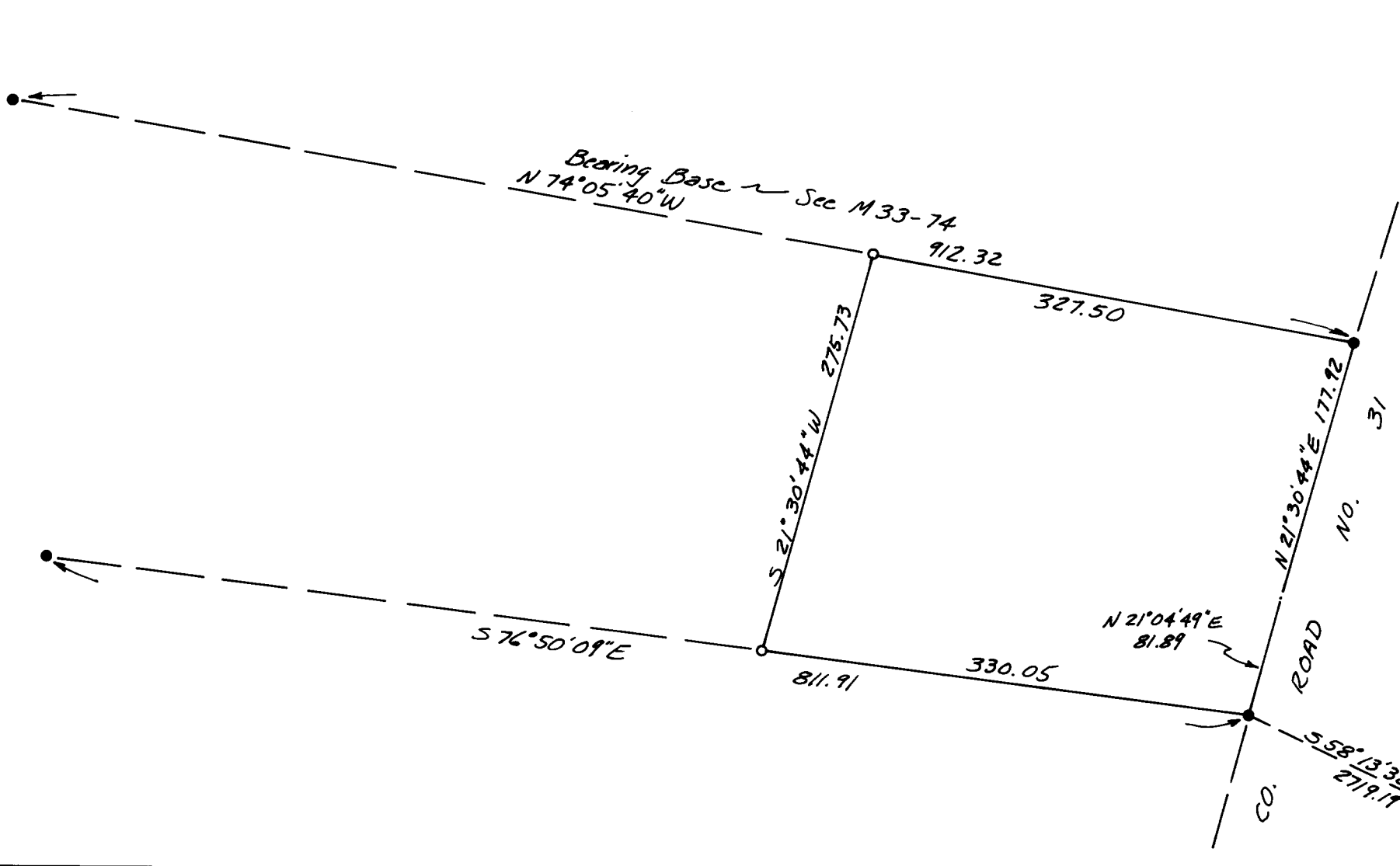
FILED

RECEIVED 27

27 1971

COUNTY SURVEYOR
DOUGLAS COUNTY, OREGON

- Set $\frac{5}{8}$ " I. Rod
- Fd. $\frac{3}{4}$ " I. Rod



REGISTERED
OREGON
 LAND SURVEYOR

Victor M. McLind

JULY 17, 1970
 VICTOR M. MCLIND
 934

