

COUNTY SURVEYORS FILE DATA

DO NOT REMOVE FROM OFFICE

Survey of the E-W Centerline of Sec. 23, T 28S, R7W, W.M.

Surveyed for Wendell Weisner by Victor M. McLind

JULY 1971

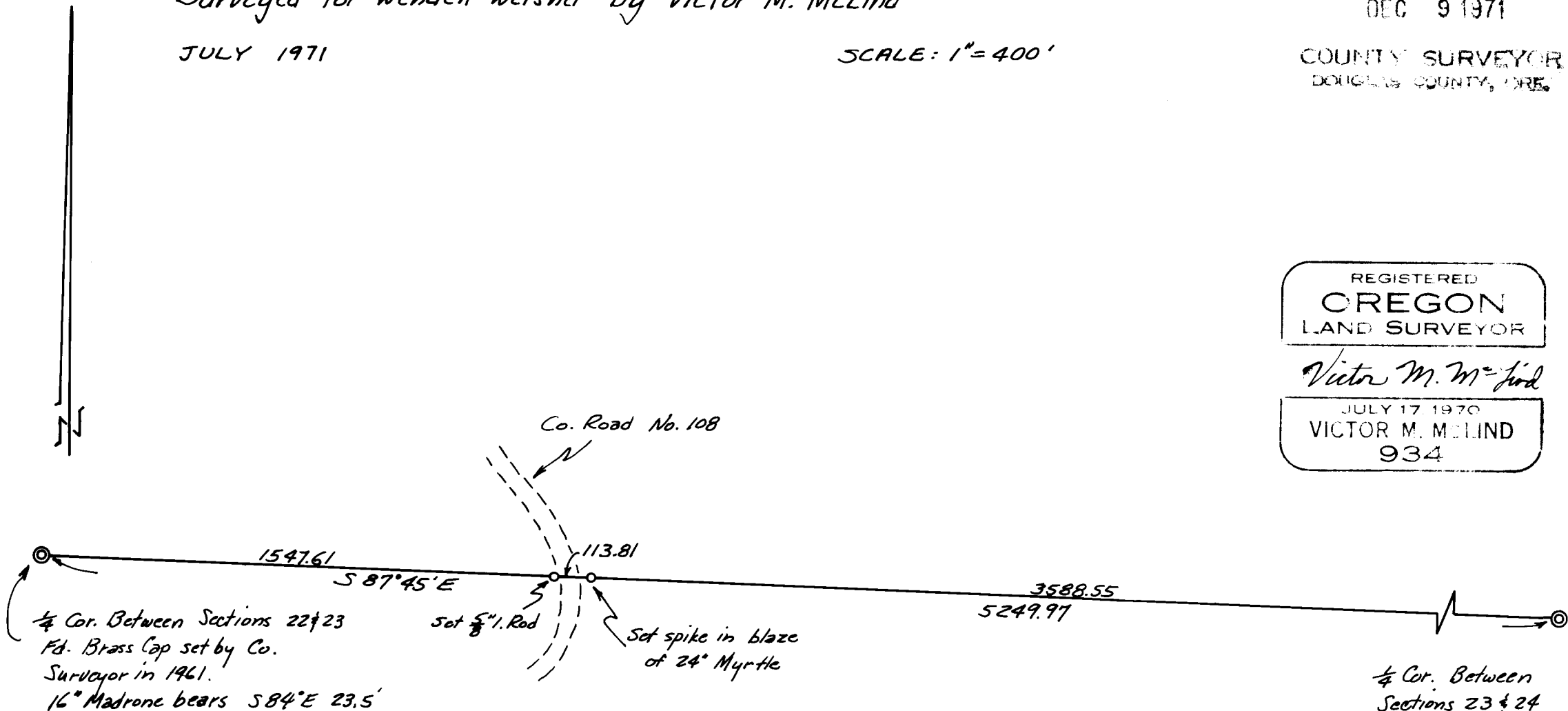
SCALE: 1" = 400'

FILED 
RECEIVED 24

DEC 9 1971

COUNTY SURVEYOR
DOUGLAS COUNTY, ORE.

REGISTERED
OREGON
LAND SURVEYOR
Victor M. McLind
JULY 17 1970
VICTOR M. McLIND
934



Note: Bearing is based on magnetic compass
(Var. 20° East)

COUNTY SURVEYORS FILE DATA
DO NOT REMOVE FROM OFFICE