

**SURVEY FOR PROPERTY CORNERS
 IN LOT 4, BLK. 12, AMENDED MAP
 OF JONES ADD. TO ROSEBURG, SEC. 13, T. 21 S., R. 6 W.
 SURVEY FOR HUNTS' CHAIN SAWS, INC.**

BY BAUGHMAN SURVEYING SERVICE

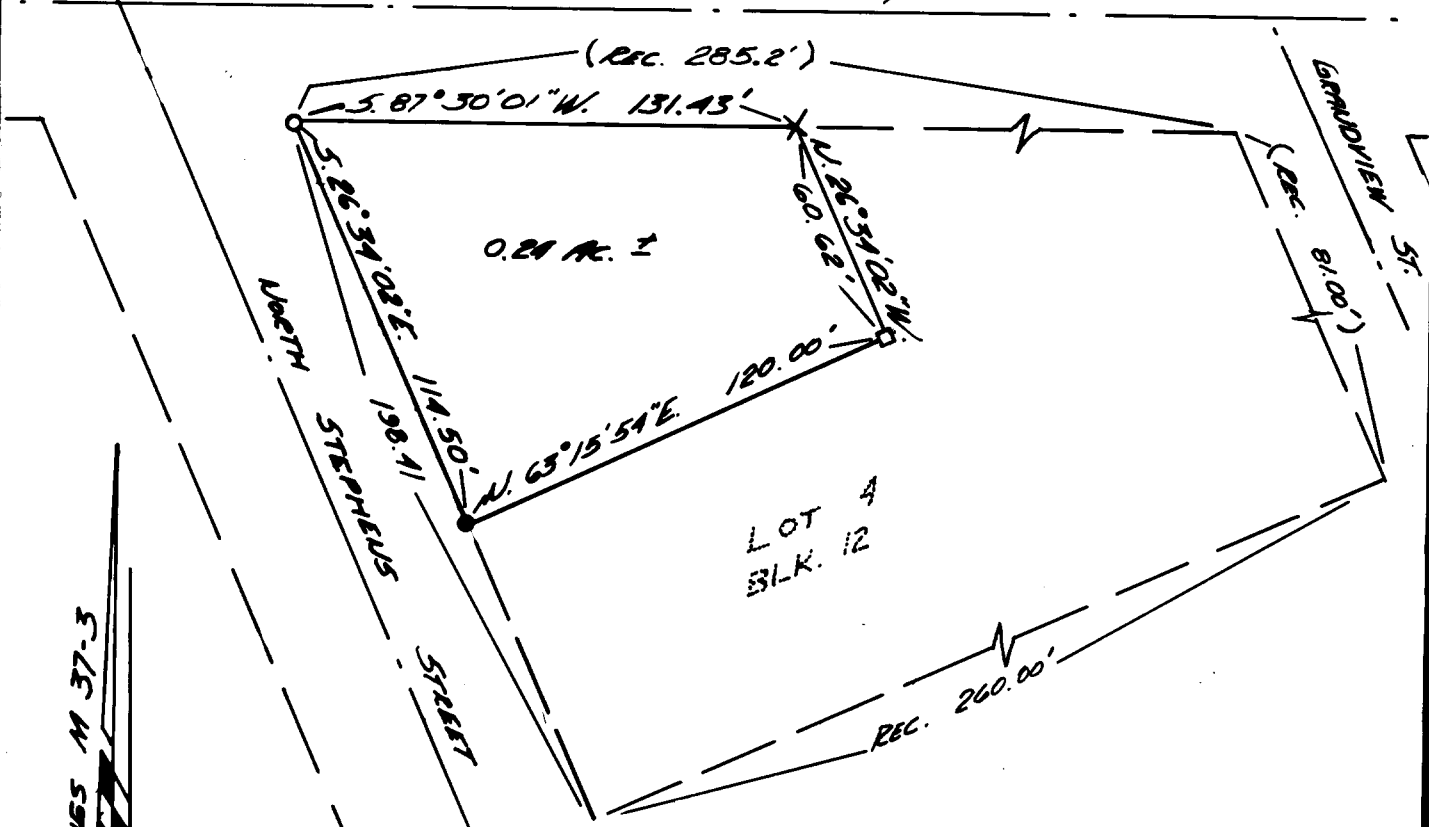
**COUNTY SURVEYORS FILE DATA
 DO NOT REMOVE FROM OFFICE**

REGISTERED
 OREGON
 LAND SURVEYOR

Glenn S. Baughman

JULY 14, 1961
 GLENN S. BAUGHMAN
 536

GARDEN VALLEY BLVD. 80' E/W



BASE BEARINGS M 37-3

FILED
 RECEIVED

OCT 15 1971

COUNTY SURVEYOR
 DOUGLAS COUNTY, OREGON

LEGEND :

- FD. 5/8" I.R.
 - SET 5/8" I.R.
 - HOLE IN CONCRETE
 - X CHISELED IN CONCRETE
- NOVEMBER, 1971