

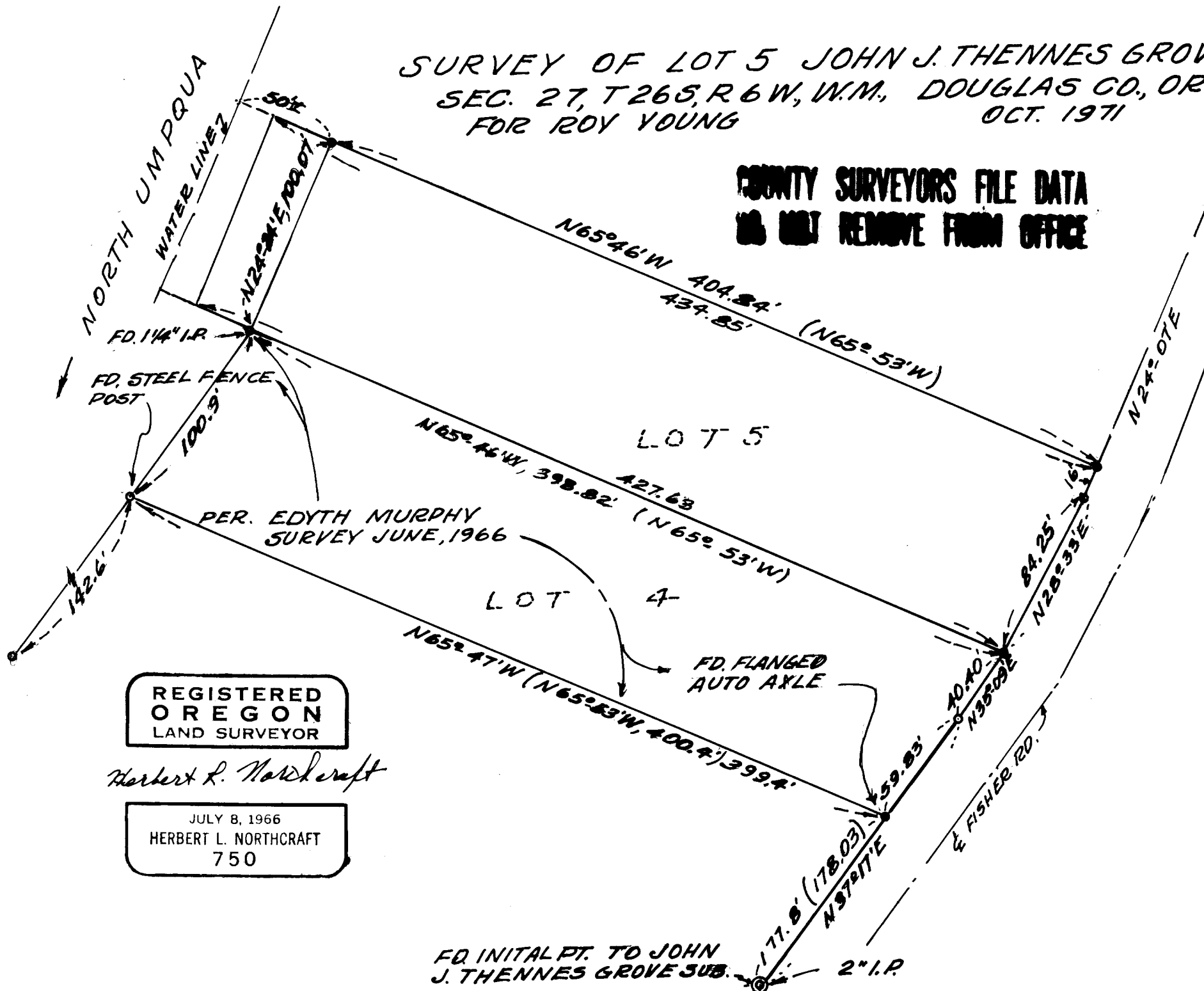
SURVEY OF LOT 5 JOHN J. THENNES GROVE  
 SEC. 27, T26S, R6W, W.M., DOUGLAS CO., ORE.  
 FOR ROY YOUNG  
 OCT. 1971

COUNTY SURVEYORS FILE DATA  
 DO NOT REMOVE FROM OFFICE

FILED  
 RECEIVED

OCT 26 1971

COUNTY SURVEYOR  
 DOUGLAS COUNTY, ORE.



REGISTERED  
 OREGON  
 LAND SURVEYOR

*Herbert L. Northcraft*

JULY 8, 1966  
 HERBERT L. NORTH CRAFT  
 750

BASE N37°17'E ±  
 EDYTH MURPHY SUR.  
 6/66 - BOYER  
 SCALE 1"=60'  
 SET 5/8" x 30" I. ROD

FD. INITIAL PT. TO JOHN  
 J. THENNES GROVE SUB. 2" I.P.

P C.S. File No. 55/221