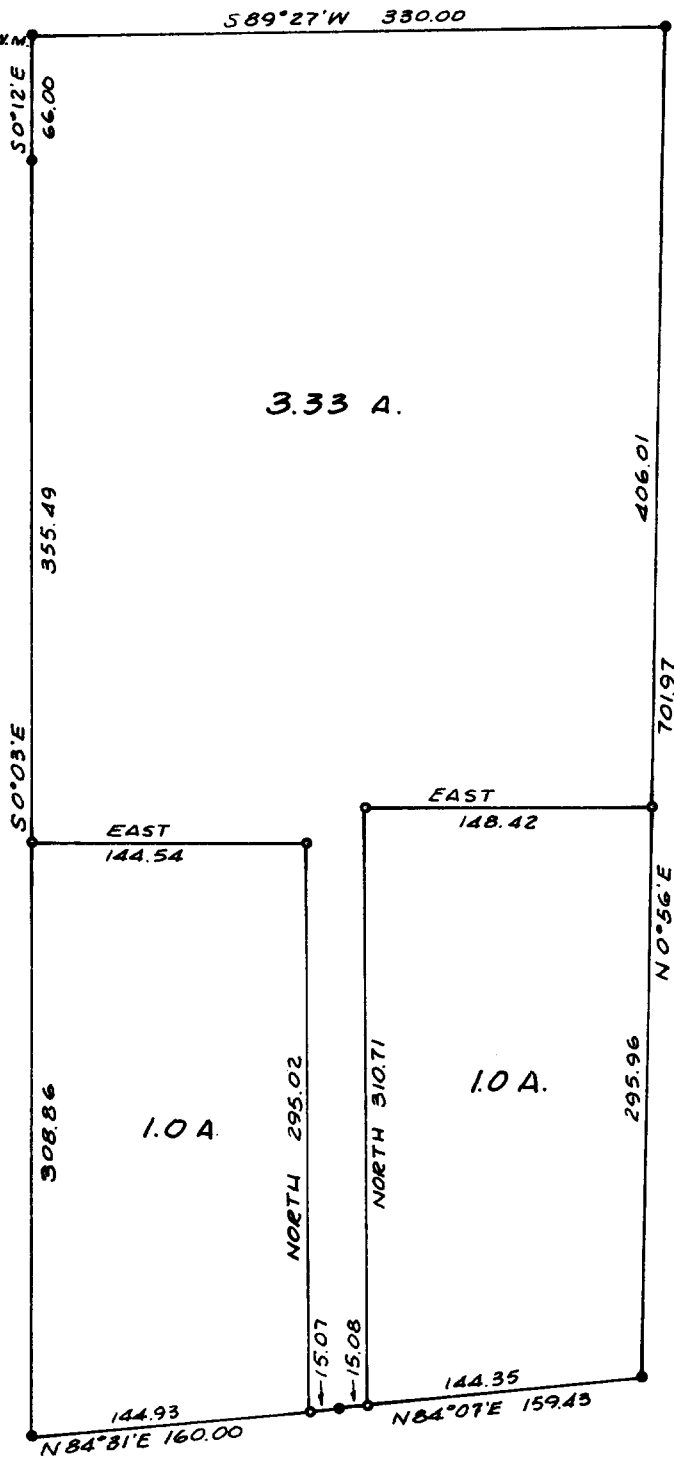


INITIAL POINT  
 NW COR. SEC. 28, T. 26 S., R. 6 W., W.M.  
 BEAR NORTH 789.01 &  
 WEST 1,016.62



FILED *LL*  
 RECEIVED

OCT 28 1971

COUNTY SURVEYOR  
 DOUGLAS COUNTY, ORE.

● DENOTES 4/8" I.R. FND.  
 ○ DENOTES 5/8" I.R. SET  
 BEARINGS BASED ON C.S. FILE R.M.I-68



**SURVEY IN SECTION 28, T. 26 S., R. 6 W., W.M.  
 SURVEYED FOR ROBERT & IRIS REINERT  
 SURVEYED BY R. H. GEE - DECEMBER, 1971  
 SCALE 1" = 100'**

**COUNTY SURVEYORS FILE DATA  
 DO NOT REMOVE FROM OFFICE**