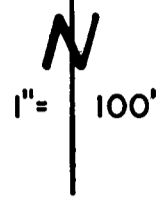


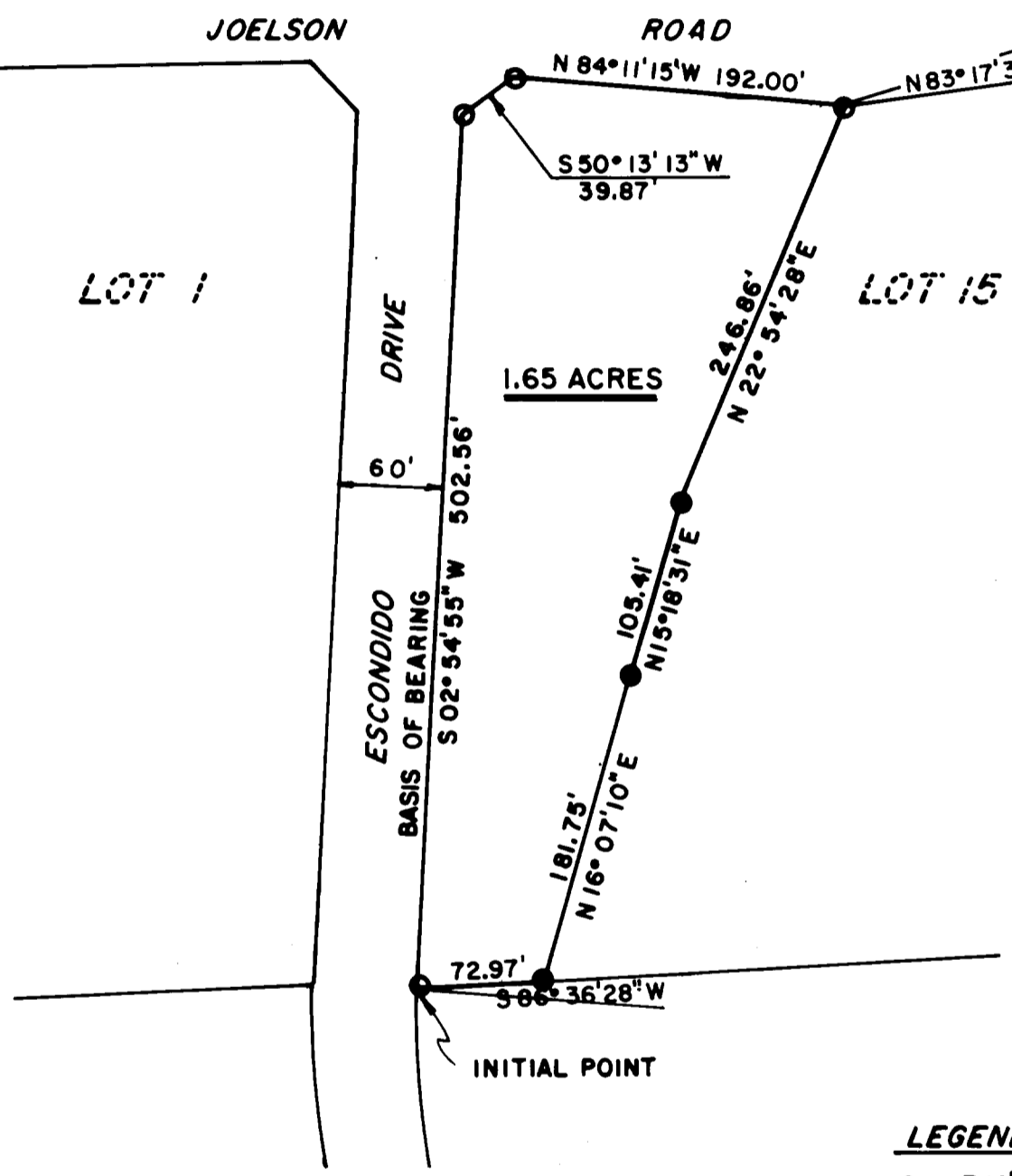
**COUNTY SURVEYORS FILE DATA
DO NOT REMOVE FROM OFFICE**
 SURVEY of a PORTION of LOT 15
 of PAULETTO TRACT LOCATED
 in SECTION 2, T.26S., R.7W., W. M.

FOR R. KEITH DAY
 BY HAROLD BALL
 OCT., 1971

FILED *LL*
 RECEIVED
 OCT 21 1971
 COUNTY SURVEYOR
 DOUGLAS COUNTY, ORE.



N79°36'36"E
 478.06' TO
 N.E. COR. D.L.C
 NO. 42
 24B 11/5/71
 STONE W/
 CROSS



- LEGEND**
- — 3/4" PIPE FOUND
 - — 5/8" ROD SET

