

SURVEY OF LOT 7 OF COUNTRY HILL LAND  
 DIVISION LOCATED IN SECTIONS 22 ~~8-27~~<sup>21&B</sup>,  
 T.26 S., R.6 W., W. M.

FOR AL REBER  
 by HAROLD BALL

OCT. 1971

FILED *LL*  
 RECEIVED *LL*

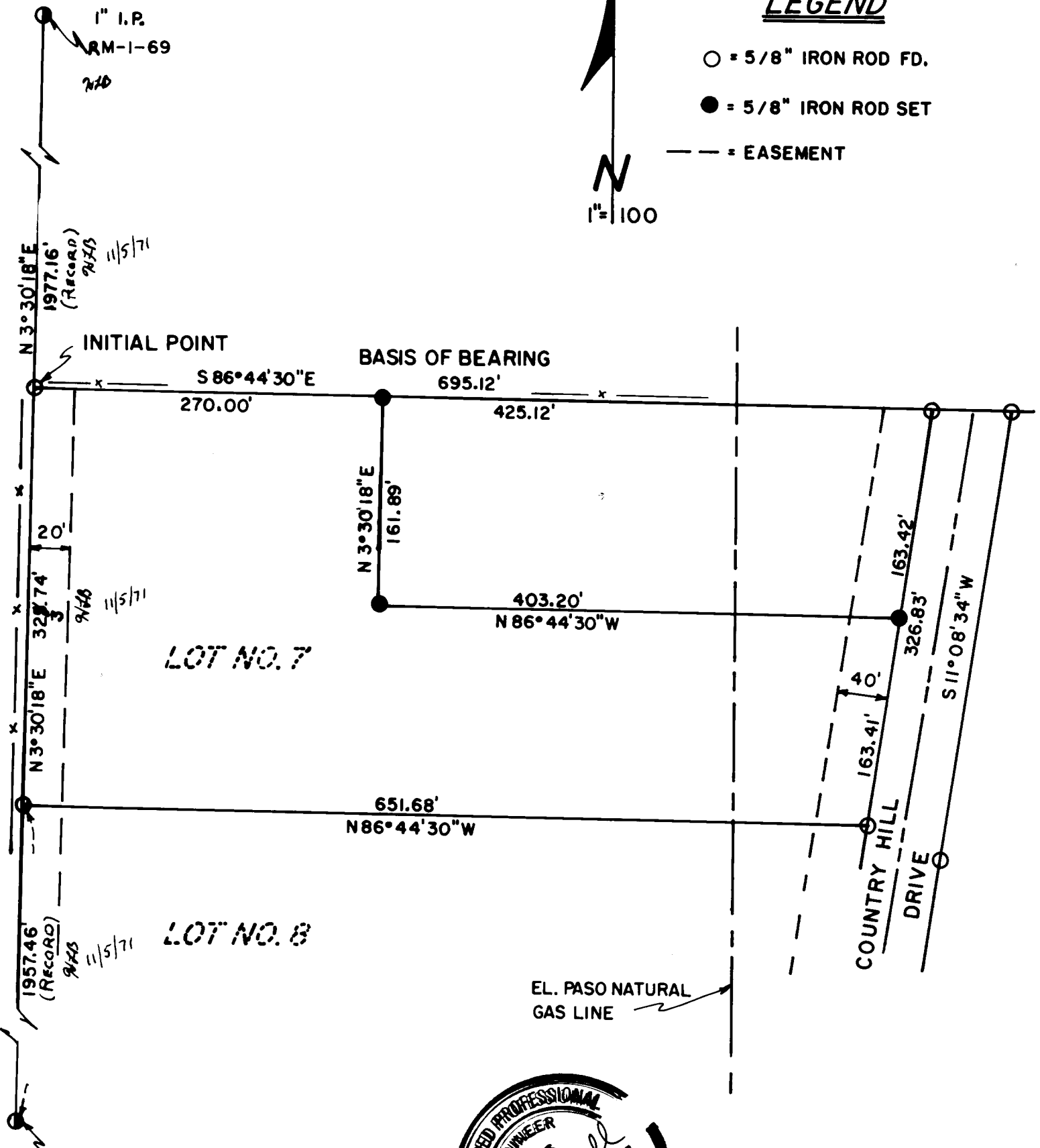
OCT 13 1971

COUNTY SURVEYORS FILE DATA  
 DO NOT REMOVE FROM OFFICE

COUNTY SURVEYOR  
 OF THE COUNTY OF DEWEE

LEGEND

- = 5/8" IRON ROD FD.
- = 5/8" IRON ROD SET
- = EASEMENT



S.W. COR. OF  
 E. 1/2 OF D.L.C. 43

