

PROPERTY SURVEY

For PAUL McCONNEL

Gov't. Lot 2 Sec. 4 T.20 S. R.12 W., W.M.

BEARINGS FROM HIGHWAY (STODDART)

SCALE: 1" = 400'

SEPT. 1971

DOUGLAS COUNTY

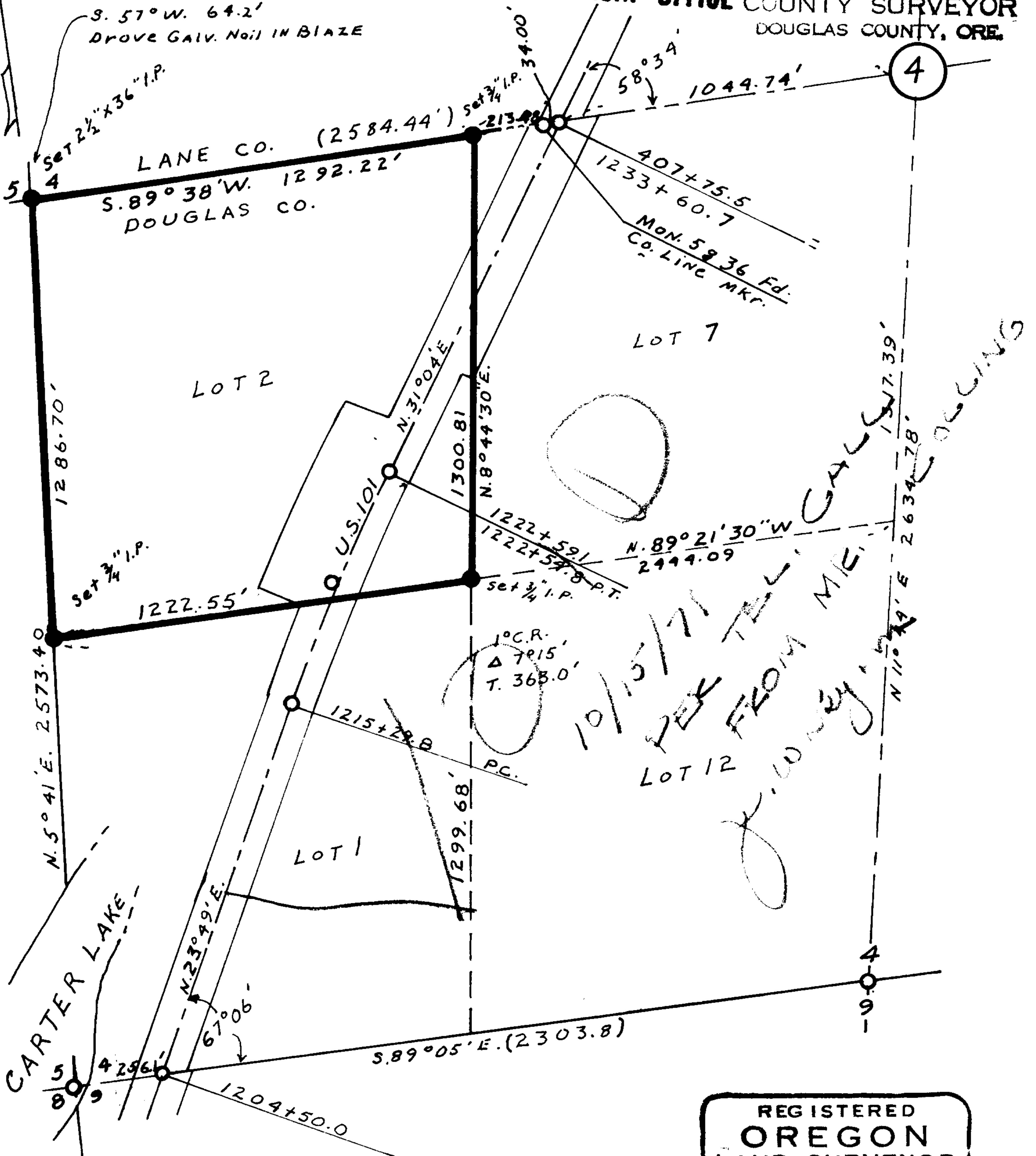
FILED
RECEIVED

COUNTY SURVEYORS FILE DATA
DO NOT REMOVE FROM OFFICE

SEP 22 1971

COUNTY SURVEYOR
DOUGLAS COUNTY, ORE.

BLAZED 6" PINE BT.S
N. 58° W. 45.3'
S. 57° W. 64.2'
DROVE GALV. NAIL IN BLAZE



NOTE:

Sec. Cor & 1/4 Cors. Fd. as shown by Hwy.
Ties in Nov. 1931 By H.A. STODDART
B.P.R.

REGISTERED
OREGON
LAND SURVEYOR

Forrest A. Colling

JULY 12, 1968
FORREST A. COLLING
880