

# SURVEY OF SOUTH 100 FT. OF LOT 3, BLK. 2 PLEASANT VIEW SUBDIVISION

SURVEYED FOR LLOYD ROBERTS BY DON GARRETT  
OCTOBER, 1971

SCALE: 1" = 40'

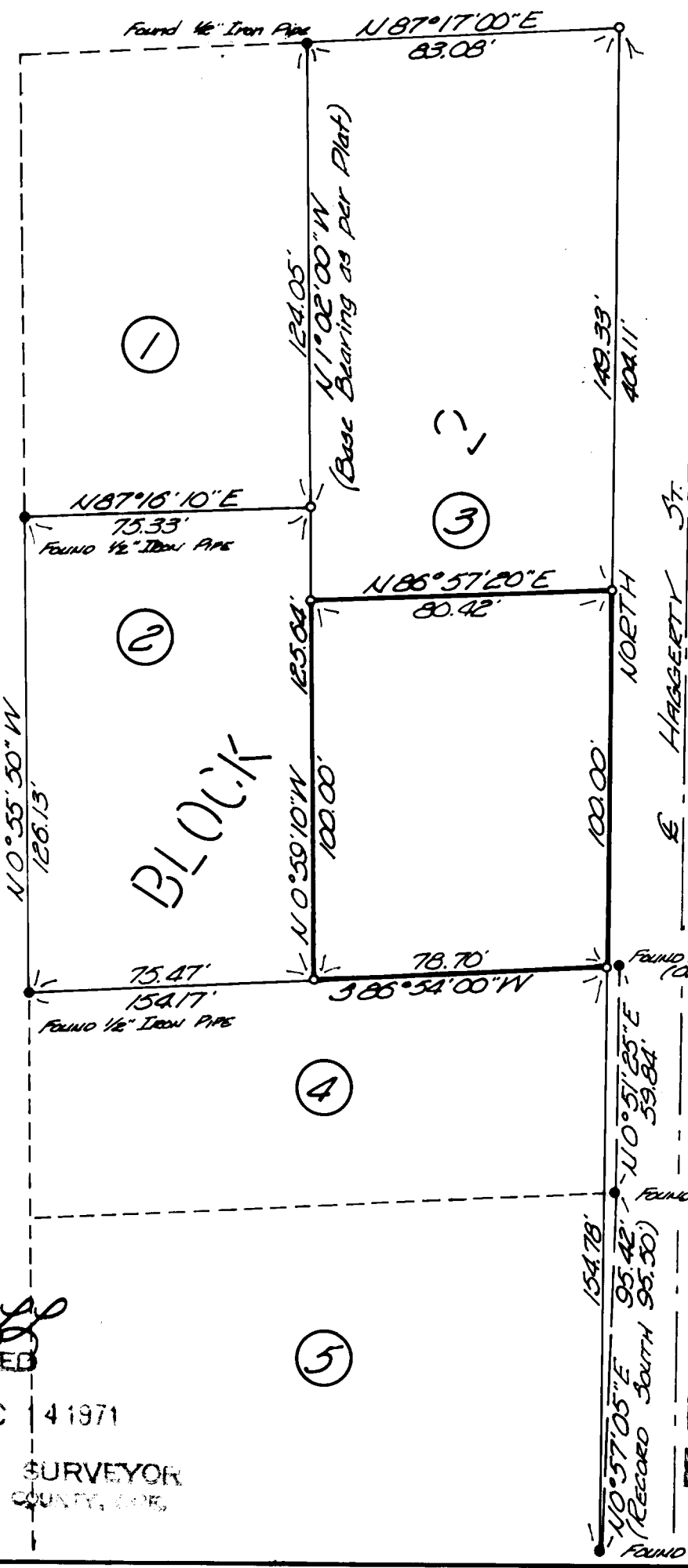
E MELROSE ROAD

o — Denotes Set 5/8" I. Rod

**REGISTERED  
OREGON  
LAND SURVEYOR**

*Don E. Garrett*

JULY 14, 1961  
DON E. GARRETT  
544



These points found by Lecklider (See M15-25) There is no record of these points being set and I do not use because they cause serious distortion in the Northeast corner of Plat.

FILED RECEIVED

DEC 4 1971

COUNTY SURVEYOR DOUGLAS COUNTY, ORE.

COUNTY SURVEYORS FILE DATA DO NOT REMOVE FROM OFFICE