

SURVEY IN SECTIONS 12 & 13, TOWNSHIP 27 SOUTH, RANGE 5 WEST, WILLAMETTE MERIDIAN
 Surveyed for Pete Serafin by Don E. Garrett
 August, 1971

Scale 1" = 100'

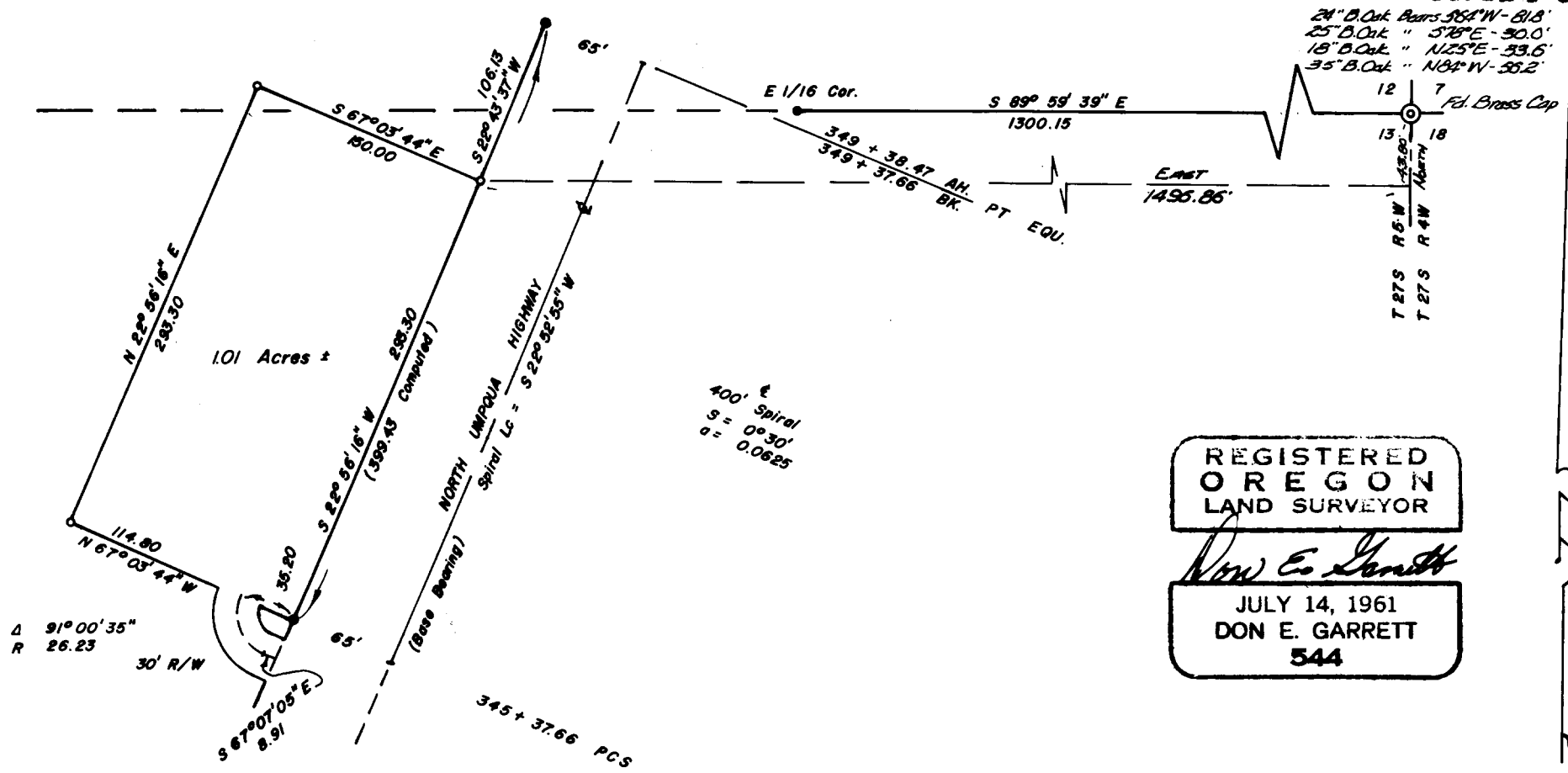
- Found 5/8" Iron Rod
- o Set 5/8" Iron Rod

**COUNTY SURVEYORS FILE DATA
 DO NOT REMOVE FROM OFFICE**

FILED *LL*
 RECEIVED

SEP 8 1971

COUNTY SURVEYOR
 DOUGLAS COUNTY, ORE.



24" B. Oak Bears 96° W - 81.8'
 25" B. Oak " 57° E - 30.0'
 18" B. Oak " N 25° E - 33.6'
 35" B. Oak " N 84° W - 35.2'

REGISTERED
 OREGON
 LAND SURVEYOR
Don E. Garrett
 JULY 14, 1961
 DON E. GARRETT
 544