

COUNTY SURVEYORS FILE DATA

DO NOT REMOVE FROM OFFICE

Survey in Sec. 4, T 32S, R 4W, W.M., Douglas County, Ore.

Surveyed for Reuben Vosberg by Victor M. McLind

OCTOBER 1971

SCALE: 1" = 400'

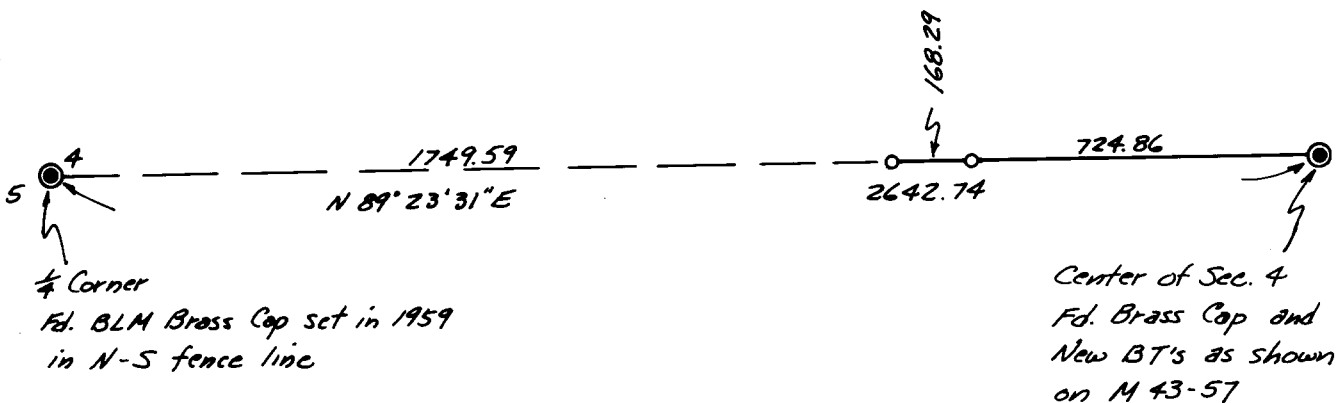
Bearings Based on Solar Observation
taken Sept. 17, 1971

o Indicates Set $\frac{5}{8}$ " Rod

FILED 
RECEIVED

NOV 1 1971

COUNTY SURVEYOR
DOUGLAS COUNTY, ORE.



REGISTERED
OREGON
LAND SURVEYOR

Victor M. McLind

JULY 17 1970
VICTOR M. MCLIND
934