

SURVEY IN THE SE ¼ SEC. 32, T23S, R5W, W.M.

Surveyed for Frank Eggers by Victor M. McLind

August 1971

COUNTY SURVEYORS FILE DATA  
DO NOT REMOVE FROM OFFICE

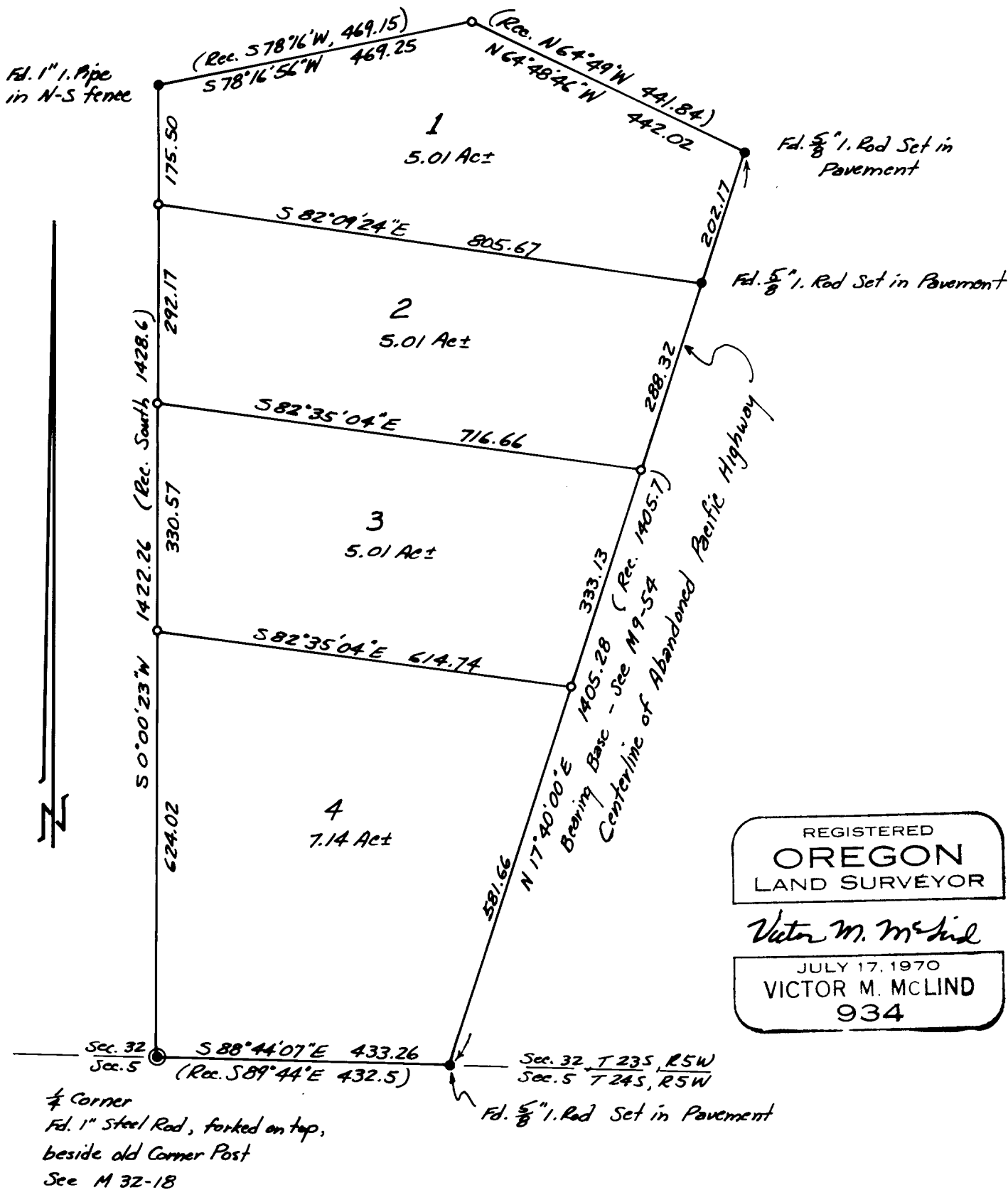
Scale: 1"=200'

o Indicates Set  $\frac{5}{8}$ " 1. Rod

FILED   
RECEIVED

AUG 3 1 1971

COUNTY SURVEYOR  
DOUGLAS COUNTY, ORE.



REGISTERED  
OREGON  
LAND SURVEYOR

Victor M. McLind

JULY 17, 1970  
VICTOR M. MCLIND  
934