



Weyerhaeuser Company

Section 2, 11

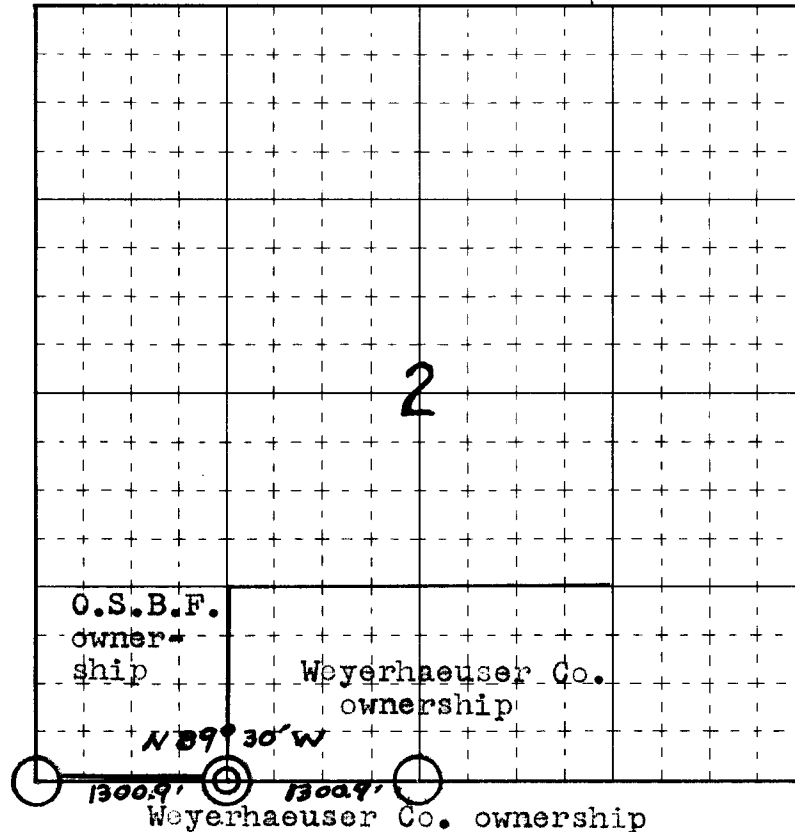
Township 27 S

Range 8 W, W.M.

Douglas Co., Ore.

ESTABLISHED CORNER FOR WEYERHAEUSER COMPANY

W 1/16th Corner Between Sections 2 and 11



Corner found

Corner set

Line Blazed

REGISTERED
OREGON
LAND SURVEYOR

Craig L. Templin

JULY 17, 1970
CRAIG L. TEMPLIN
938

O.S.B.F.
owner-
ship Weyerhaeuser Co.
ownership

N 89° 30' W

1300.9'

Weyerhaeuser Co. ownership

This one-sixteenth section corner was set by a transit and slope chain survey between the SW corner of section 2 and the S 1/4 corner of section 2. Traverse closure was 1:39,000.

For this corner I set a 1 1/2" Iron pipe with a Brass Cap marked "1/16 S 2/11 T27S R8W 1971" from which I marked:

6" fir N00° 0' W 9.3 ft. marked 1/16 S BT - Tag, "W" nail

6" fir S 17° E 14.2 Ft. marked 1/16 S BT - Tag, "W" nail

Distances are horizontal distances to the center of the tree and bearings were taken on the "W" nail in the base of each tree.

FILED
RECEIVED

AUG 23 1971

D.W. 5/13/71

COUNTY SURVEYOR
DOUGLAS COUNTY, ORE.

June 17 19 71
Craig Templin, Party Chief
H. A. Lester, Instrumentman
J. W. McWhorter, Chainman

C. S. File No. 55/208-2