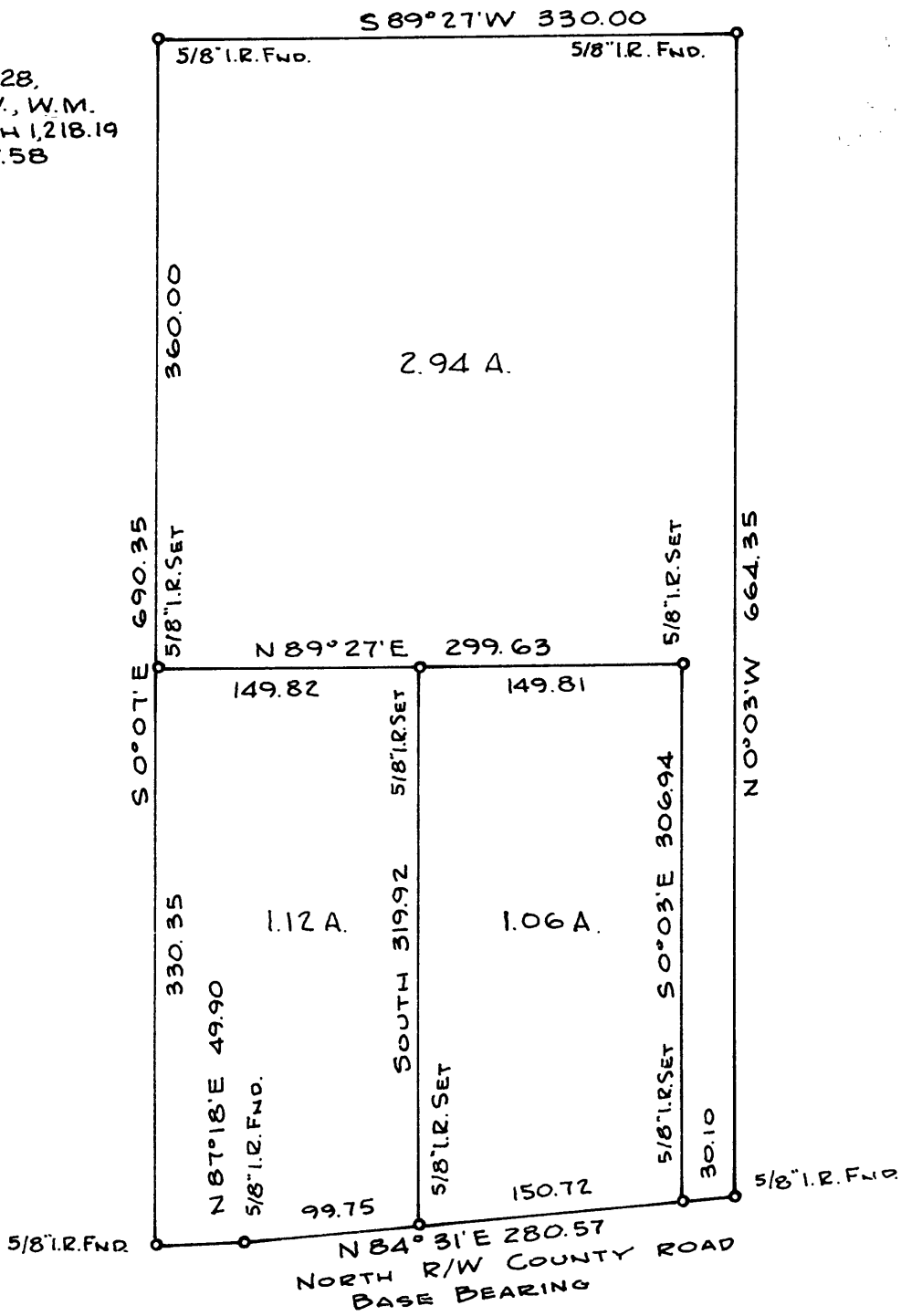


55/207/55

FILED  
RECEIVED 2/7

INITIAL POINT  
NW COR. SEC. 28,  
T. 26 S., R. 6 W., W.M.  
BEARS NORTH 1,218.19  
AND WEST 687.58



SURVEY IN SECTION 28, T. 26 S., R. 6 W., W.M.  
SURVEYED FOR ROBERT & IRIS REINERT  
SURVED BY R. H. GEE - AUGUST, 1971  
SCALE 1" = 100'



COUNTY SURVEYORS FILE DATA  
DO NOT REMOVE FROM OFFICE

C. S. 55/207/3