

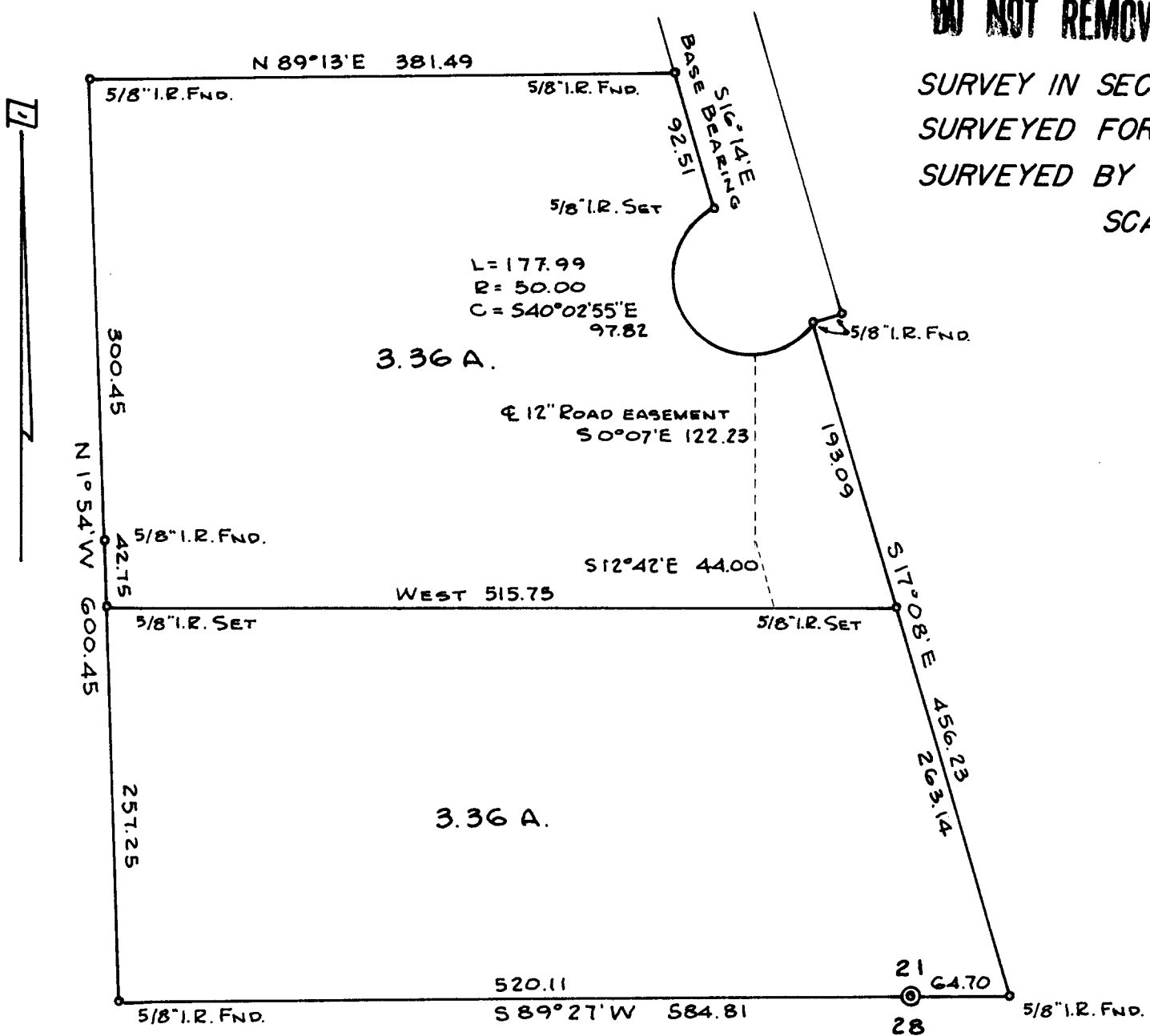
**COUNTY SURVEYORS FILE DATA
DO NOT REMOVE FROM OFFICE**

SURVEY IN SECTION 21, T.26 S., R.6 W., W.M.
SURVEYED FOR FRED DIEDRICH
SURVEYED BY R. H. GEE - AUGUST, 1971
SCALE 1" = 100'

FILED *[Signature]*
RECEIVED *[Signature]*

AUG 23 1971

COUNTY SURVEYOR
DOUGLAS COUNTY, ORE.



55/207-2

55/207-2