

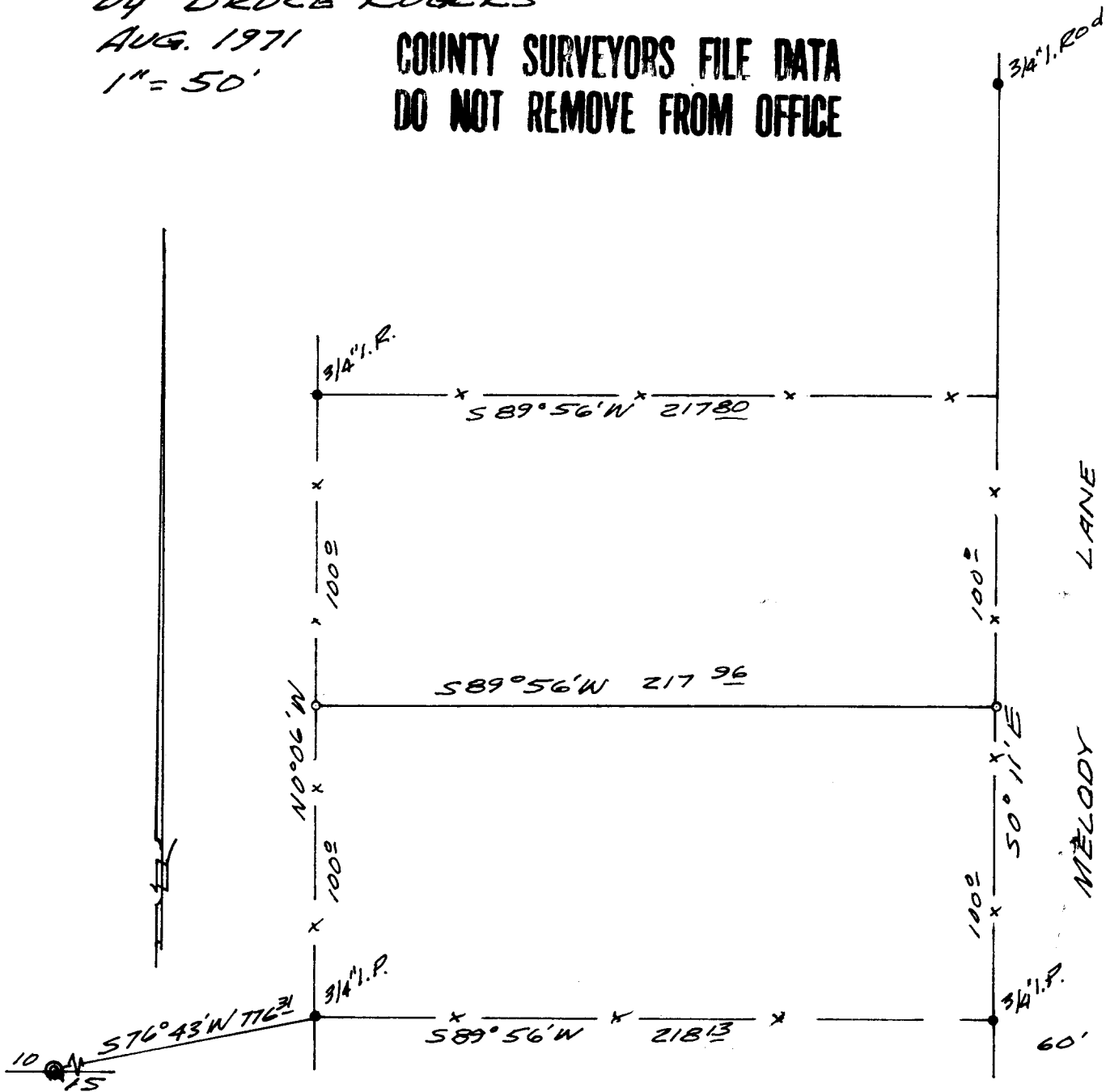
SURVEY FOR DEED DESCRIPTION  
 IN LOTS 11 & 12 FISK FRUIT FARMS  
 SEC. 10, T. 28S., R. 6W. W.M.

SURVEYED FOR AL KUYKENDALL  
 by BRUCE ROGERS

AUG. 1971

1" = 50'

COUNTY SURVEYORS FILE DATA  
 DO NOT REMOVE FROM OFFICE



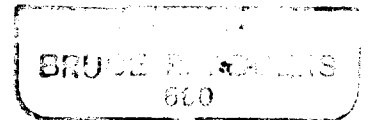
FILED *[Signature]*  
 RECEIVED

AUG 16 1971

COUNTY SURVEYOR  
 DOUGLAS COUNTY, ORE.



*Bruce L. Rogers*



- FOUND MONUMENT
- Set 5/8" Iron Rod