

REGISTERED
W E G O N
 LAND SURVEYOR

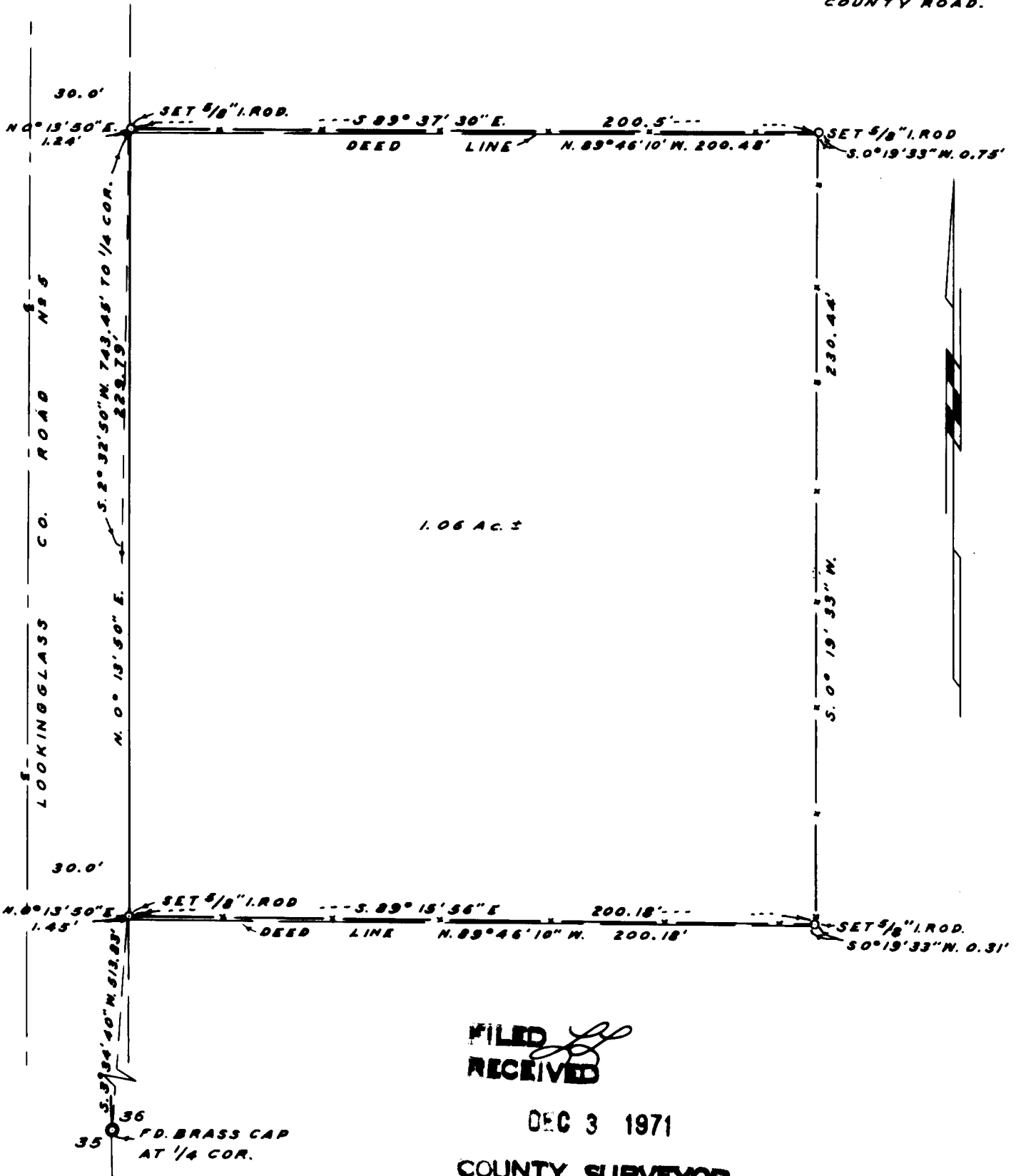
Glenn S. Sherman

JUL 1 1961
 GLENN S. SHERMAN
 512

SURVEY TO SET PROPERTY CORNERS,
 SECTION 36, T. 27 S., R. 7 W. W. M. FOR
 DELBERT NIEBAUM, SURVEYED BY
 BAUGHMAN SURVEYING SERVICE, NOV. 1971
 SCALE: 1" = 40'

**COUNTY SURVEYORS FILE DATA
 DO NOT REMOVE FROM OFFICE**

BEARINGS BASED ON
 N. 0° 13' 50" E, ALONG E
 COUNTY ROAD.



FILED
 RECEIVED

DEC 3 1971

COUNTY SURVEYOR
 DOUGLAS COUNTY, ORE.

P. C. S. File No. 55/203-3