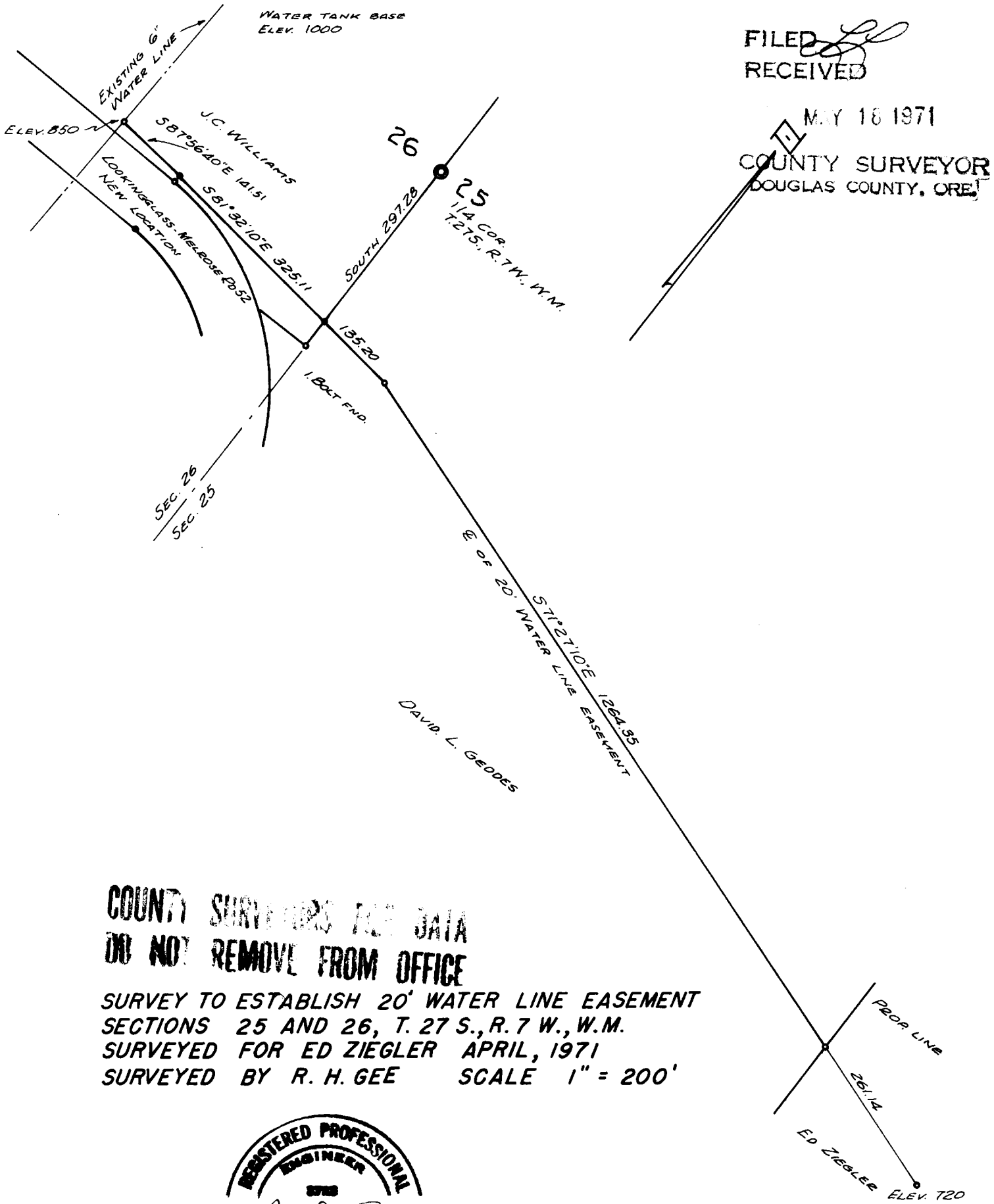


WATER TANK BASE
ELEV. 1000

FILED *[Signature]*
RECEIVED

MAY 18 1971

COUNTY SURVEYOR
DOUGLAS COUNTY, ORE.



COUNTY SURVEYORS USE DATA
DO NOT REMOVE FROM OFFICE

SURVEY TO ESTABLISH 20' WATER LINE EASEMENT
SECTIONS 25 AND 26, T. 27 S., R. 7 W., W.M.
SURVEYED FOR ED ZIEGLER APRIL, 1971
SURVEYED BY R. H. GEE SCALE 1" = 200'

