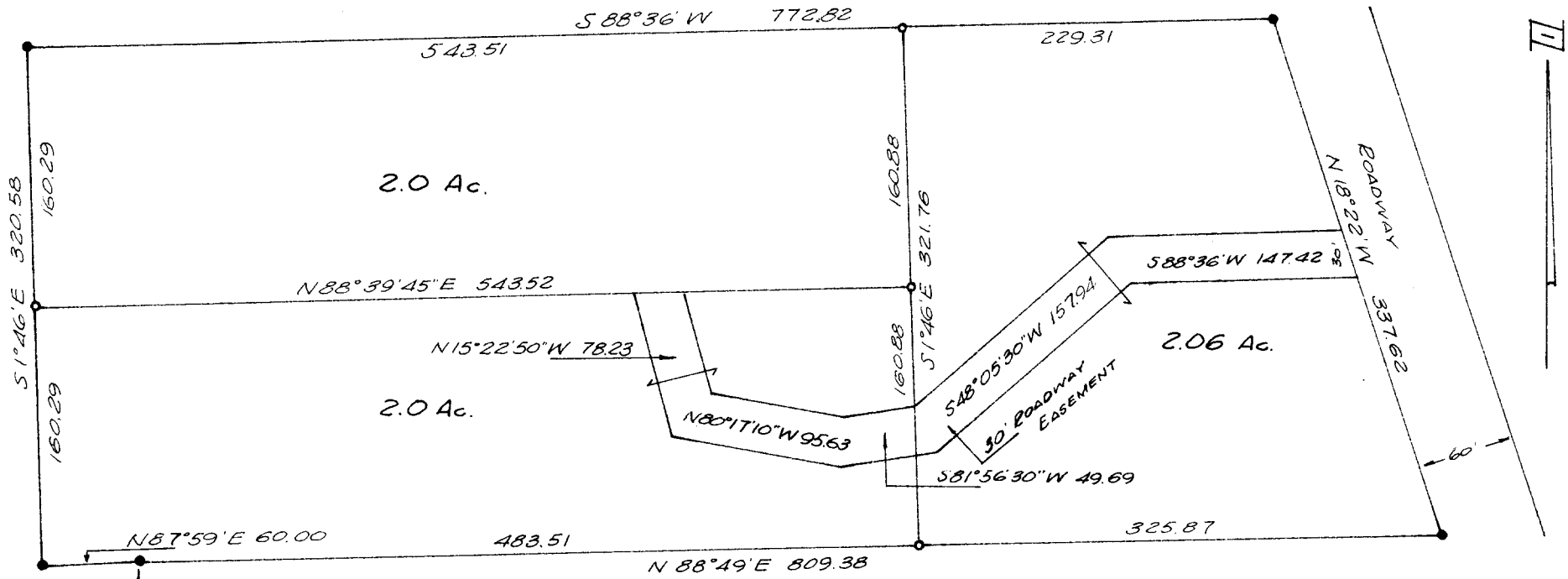


FILED
RECEIVED

MAR 26 1971

COUNTY SURVEYOR
DOUGLAS COUNTY, ORE.



INITIAL POINT
NORTH 1/4 COR. SEC. 21, T. 26 S., R. 6 W., W.M.
SOUTH 1308.50 & EAST 1080.24
BEARINGS BASED ON C.S. MAP FILE R.M. 1-77
● 5/8" I.R. FND.
○ 5/8" I.R. SET

COUNTY SURVEYORS FILE DATA
DO NOT REMOVE FROM OFFICE

SURVEY IN SECTION 21, T. 26 S., R. 6 W., W.M.
SURVEYED FOR IRA RICHARDSON
SURVEYED BY R. H. GEE - MARCH, 1971
SCALE 1" = 100'

