

FILED
RECEIVED

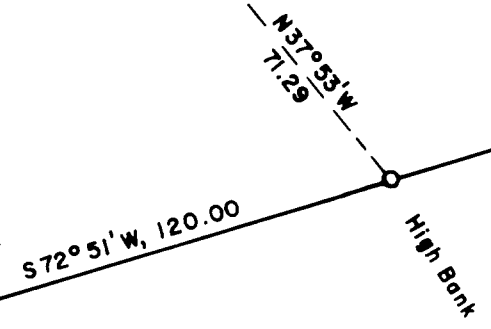
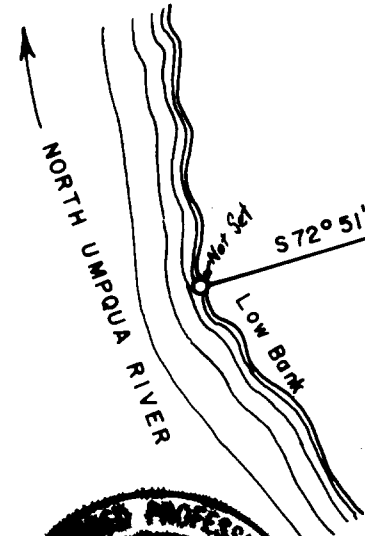
MAR 8 1971

COUNTY SURVEYOR
DOUGLAS COUNTY, OREGON

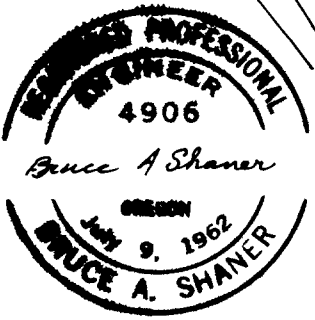
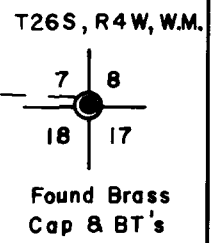
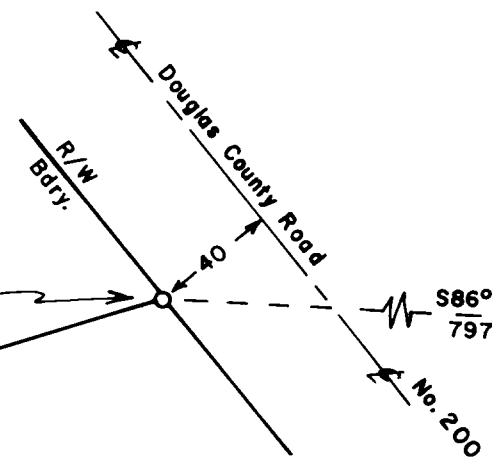
Found Brass Cap Witness Corner set by Douglas County Surveyor, 1958. From the Witness Corner it is 14.0 feet West to an original Meander Corner.

From the Brass Cap Witness Corner a:
10" Oak BT bears N30°W, 42.4 feet
16" Oak BT bears S25 1/2°E, 32.5 feet.

Sec. 7
Sec. 18

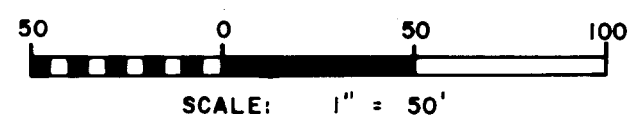


POINT OF BEGINNING



LEGEND

- Points found as noted
- 5/8" iron rod set



COUNTY SURVEYORS FILE DATA
DO NOT REMOVE FROM OFFICE

PROPERTY LINE SURVEY
IN SECTIONS 7 & 18, T26S, R4W, W.M.

for R. H. Franks & Sons

by Bruce A. Shaner, P. E.

March 8, 1971