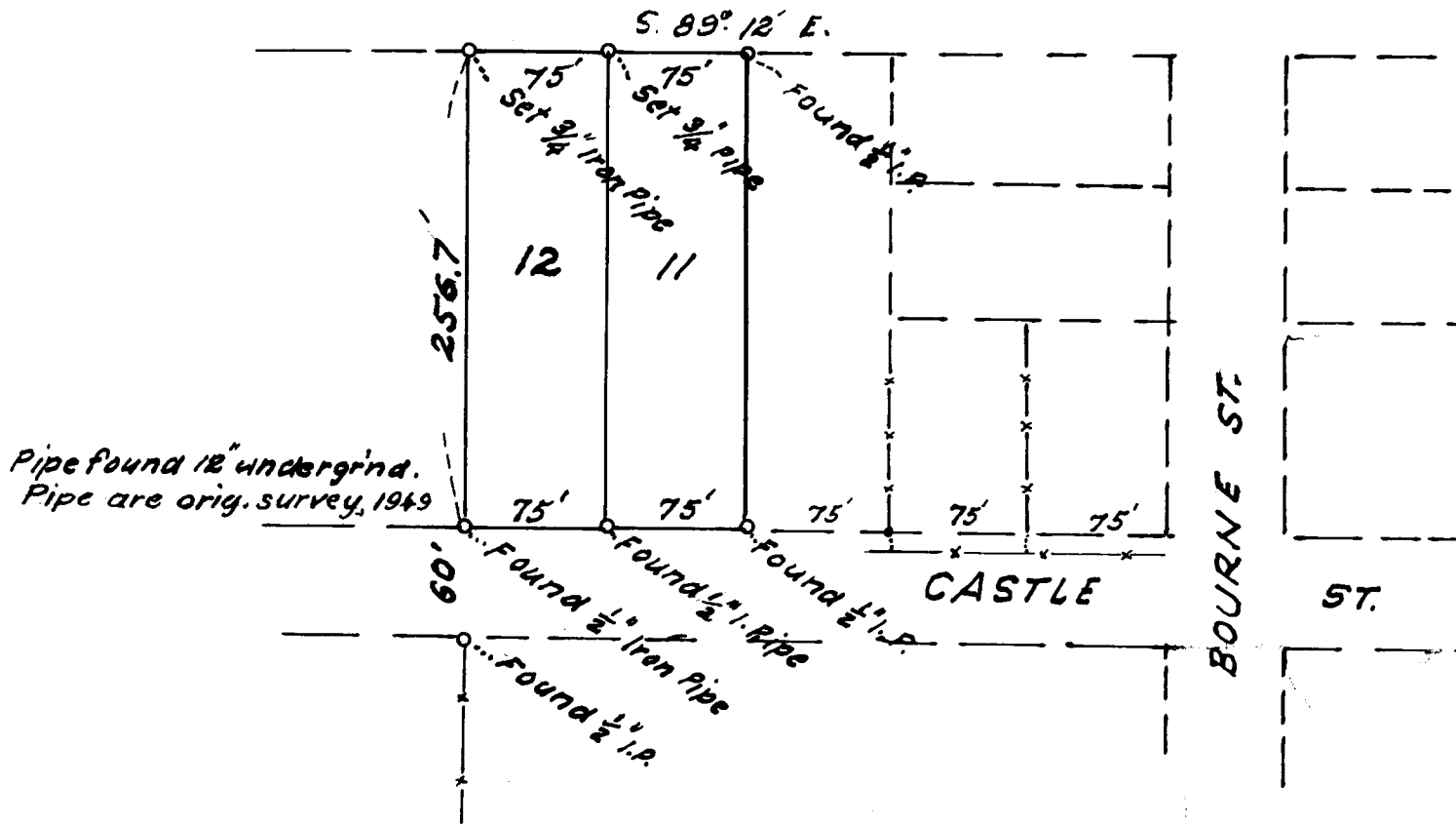


FILED *LL*
RECEIVED

JUN 2 1971

COUNTY SURVEYOR
DOUGLAS COUNTY, ORE.



JESSE L. YOUNG

LOTS 11 & 12, BOURNE'S SUBDIV.
OF LOT 1 & PT. LOT 2, PL. H, R.H.O.T.,
SEC. 3, T. 28S; R. 6W; W. M. DOUGLAS CTY,
OREGON

COUNTY SURVEYORS FILE DATA
DO NOT REMOVE FROM OFFICE

MAY, 1971

1" = 100 ft