

SURVEY IN SEC. 12, T. 27 S., R. 6 W., W. M.

Surveyed for John Morris by Don E. Garrett

April, 1971

Scale 1" = 40'

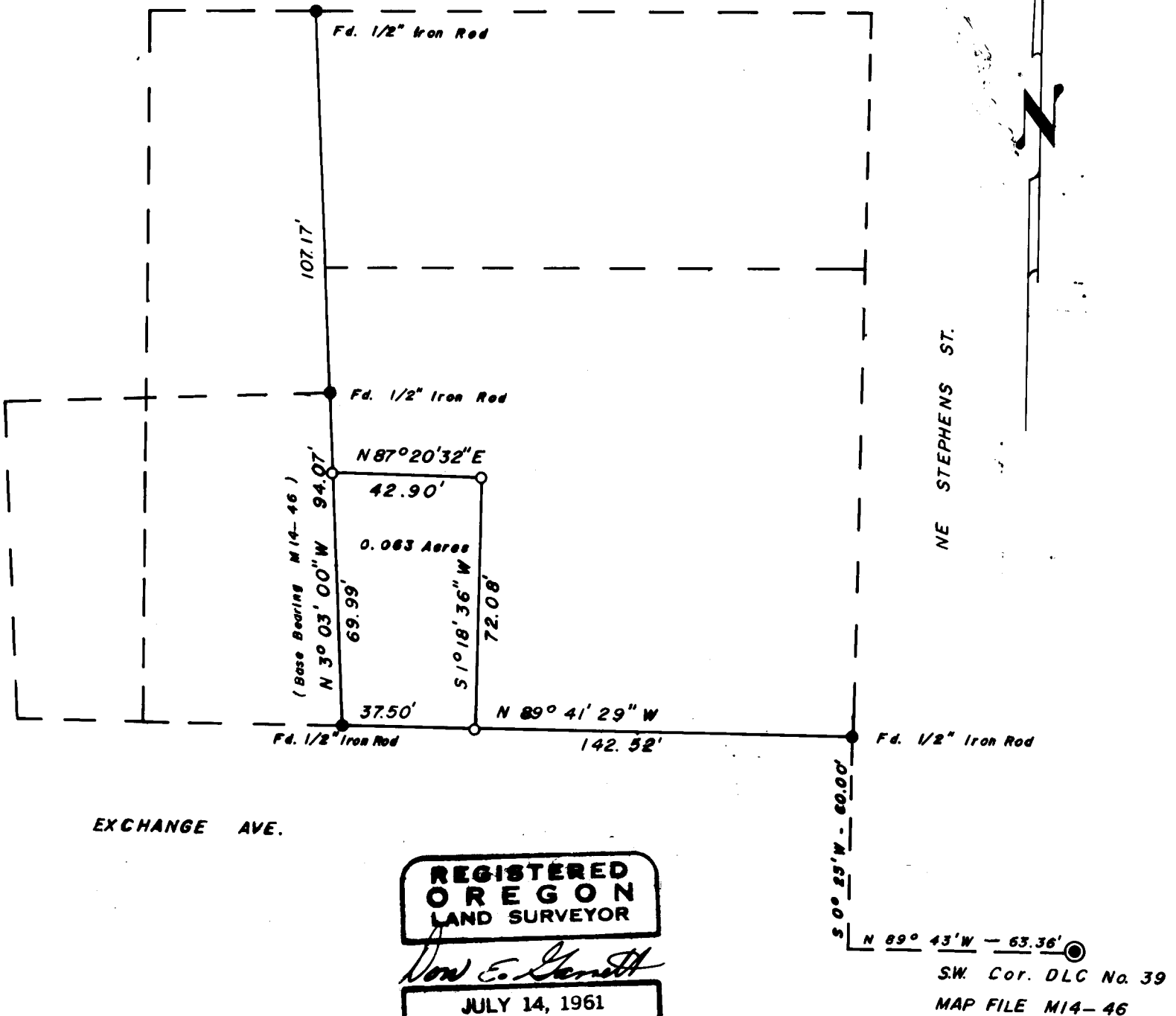
- — Found 1/2" Iron Rod
- — Set 5/8" Iron Rod

COUNTY SURVEYORS FILE DATA
DO NOT REMOVE FROM OFFICE

FILED
RECEIVED

APR 14 1971

COUNTY SURVEYOR
DOUGLAS COUNTY, ORE.



REGISTERED
OREGON
LAND SURVEYOR

Don E. Garrett

JULY 14, 1961
DON E. GARRETT
544