

SURVEY IN SECTION 35, TOWNSHIP 26 SOUTH, RANGE 5 WEST, WILLAMETTE MERIDIAN  
 Surveyed for Larry Johnston by Don E. Garrett  
 April 1971

0 - Set 5/8" I. Rod

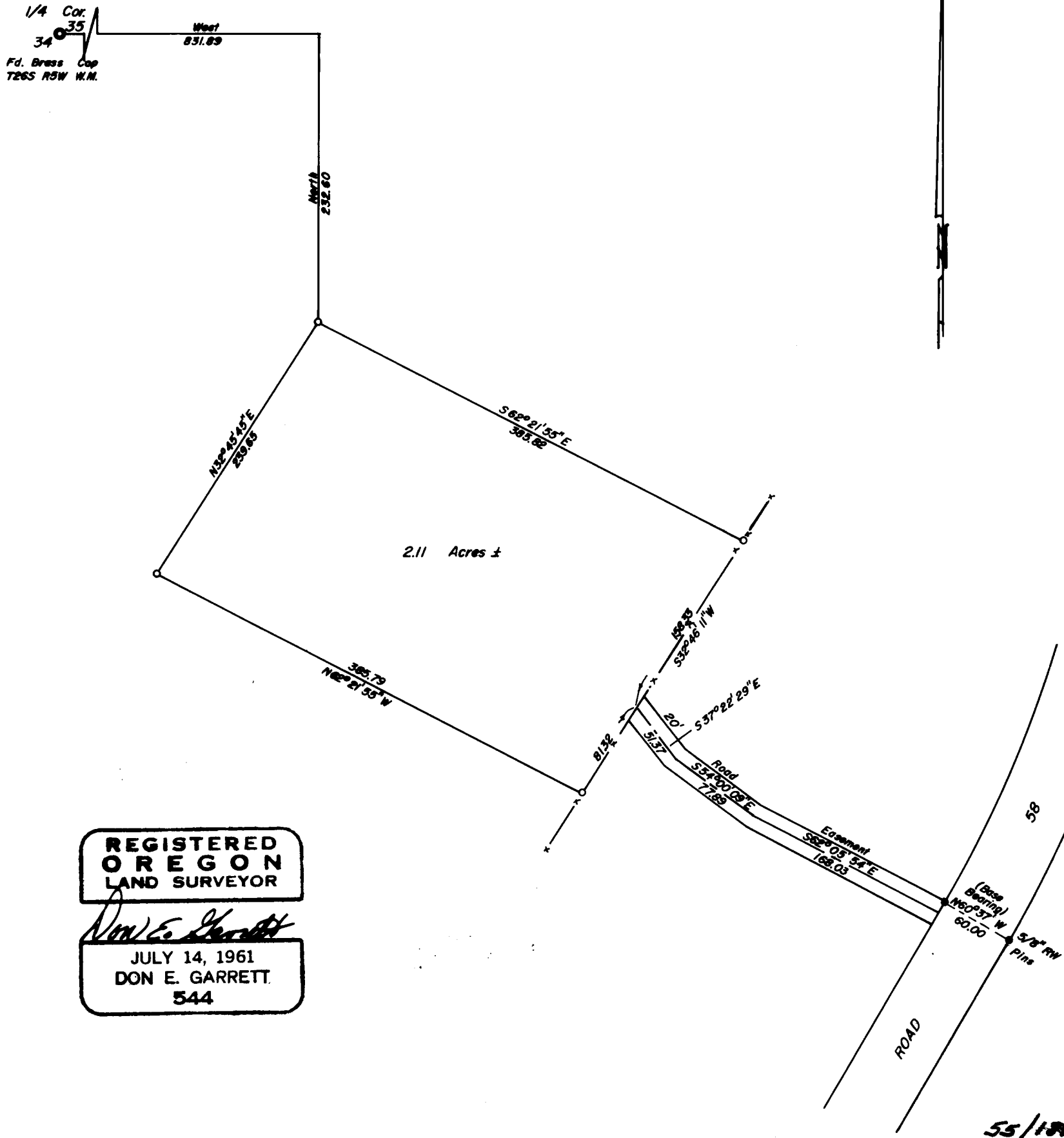
Scale 1" = 100'

COUNTY SURVEYORS FILE DATA  
 DO NOT REMOVE FROM OFFICE

FILED  
 RECEIVED

APR 1 1971

COUNTY SURVEYOR  
 DOUGLAS COUNTY, ORE.



REGISTERED  
 OREGON  
 LAND SURVEYOR

*Don E. Garrett*  
 JULY 14, 1961  
 DON E. GARRETT  
 544