

SURVEY IN SECTION 20, TOWNSHIP 27 SOUTH, RANGE 7 WEST, WILLAMETTE MERIDIAN

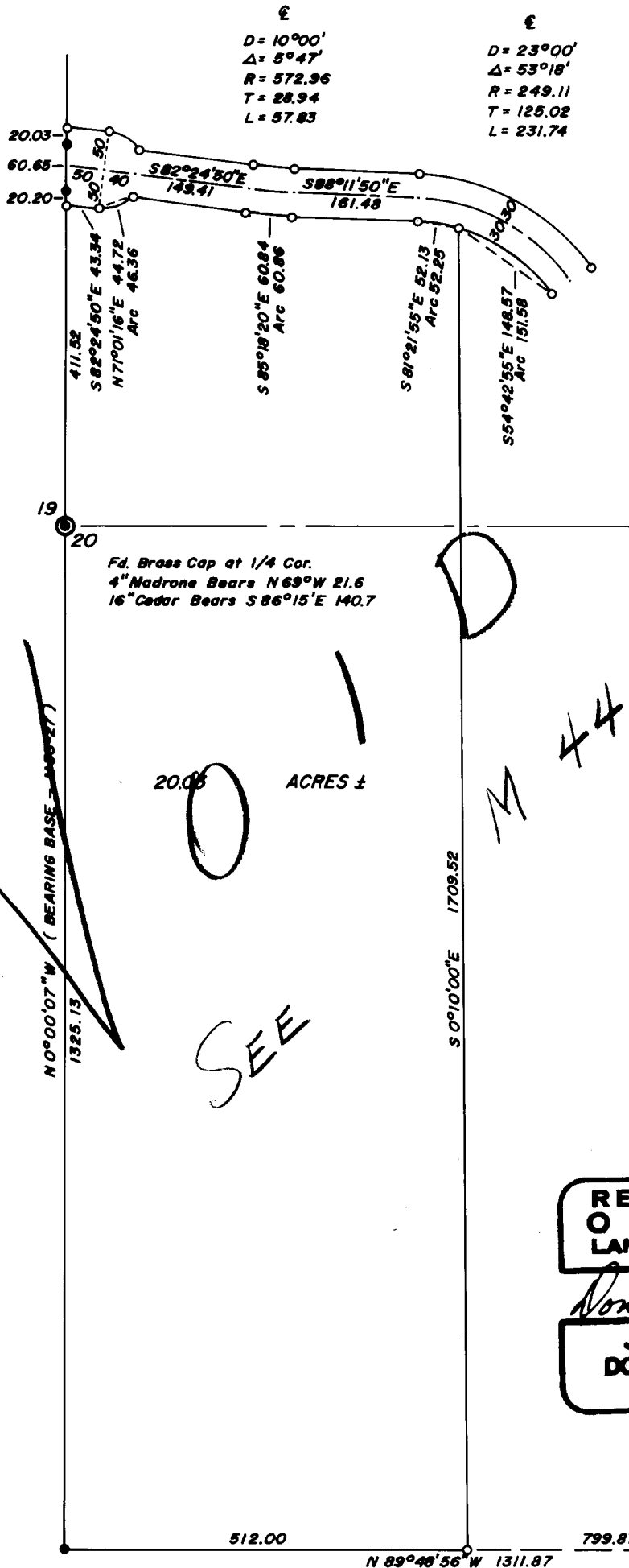
Surveyed for Hayward Reed by Don E. Garrett

November 1970

Scale : 1" = 200'

- o — Set 5/8" Iron Rod
- — Fd. 5/8" Iron Rod

**COUNTY SURVEYORS FILE DATA
DO NOT REMOVE FROM OFFICE**



€
D = 10°00'
Δ = 5°47'
R = 572.96
T = 28.94
L = 57.63

€
D = 23°00'
Δ = 53°18'
R = 249.11
T = 125.02
L = 231.74

Fd. Brass Cap at 1/4 Cor.
4" Nadrone Bears N 63° W 21.6
16" Cedar Bears S 86°15' E 140.7

20.05 ACRES ±

SEE

REGISTERED
OREGON
LAND SURVEYOR

Don E. Garrett
JULY 14, 1961
DON E. GARRETT
544

FILED *LL*
RECORDED

FEB 5 1971

COUNTY SURVEYOR
CLATSOP COUNTY, OREGON