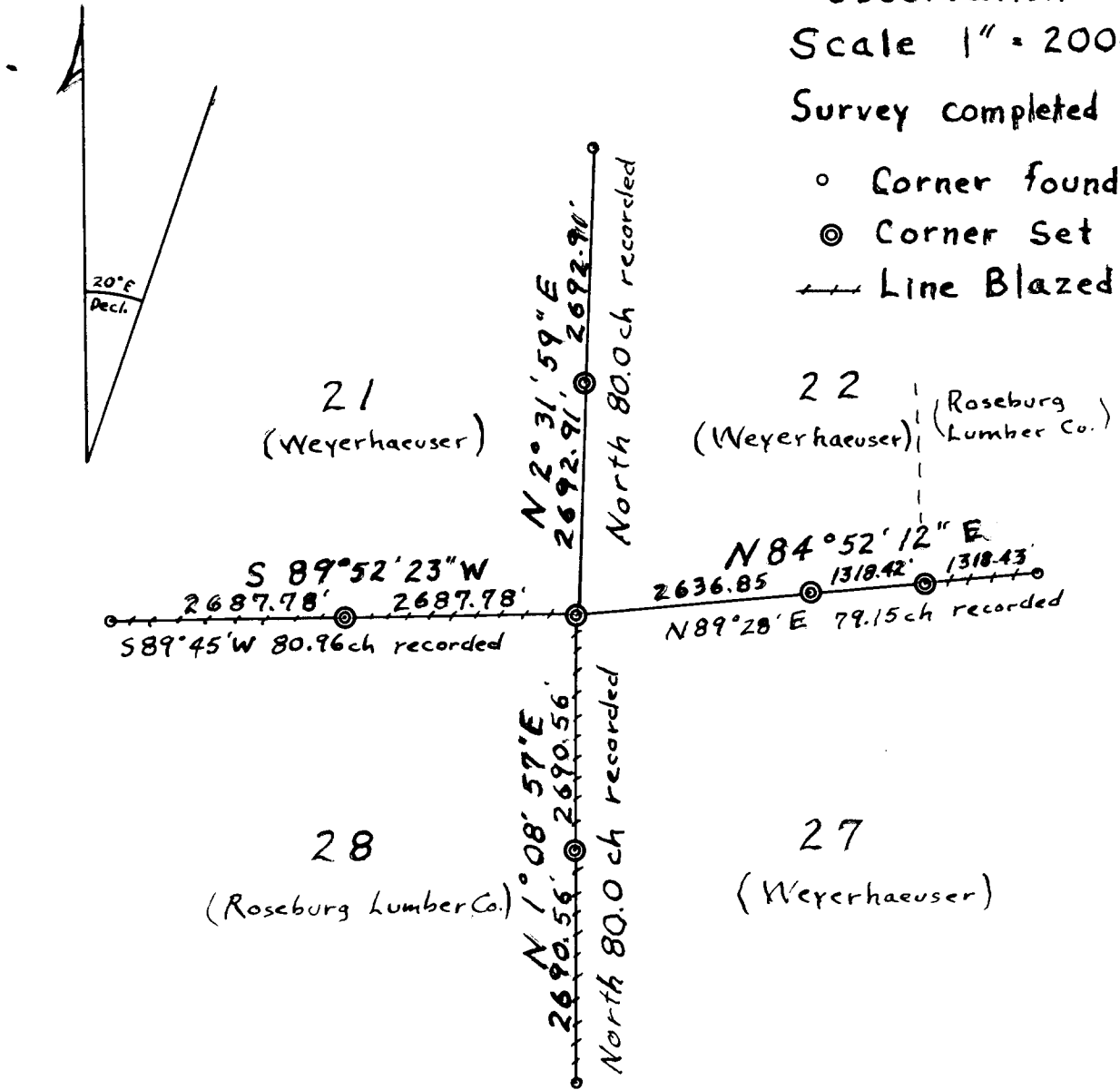


**COUNTY SURVEYORS FILE DATA  
DO NOT REMOVE FROM OFFICE**

Sections 21, 22, 27, 28  
T 25 S, R 8 W, W.M.  
Douglas Co., Oregon  
Surveyed for Weyerhaeuser  
Bearings based on Solar  
observation  
Scale 1" = 2000'  
Survey completed 10/15/70

- Corner found
- ⊙ Corner Set
- Line Blazed



FILED  
RECEIVED  
F  
F  
JUL 21 1970

COUNTY SURVEYOR  
DOUGLAS COUNTY, ORE.

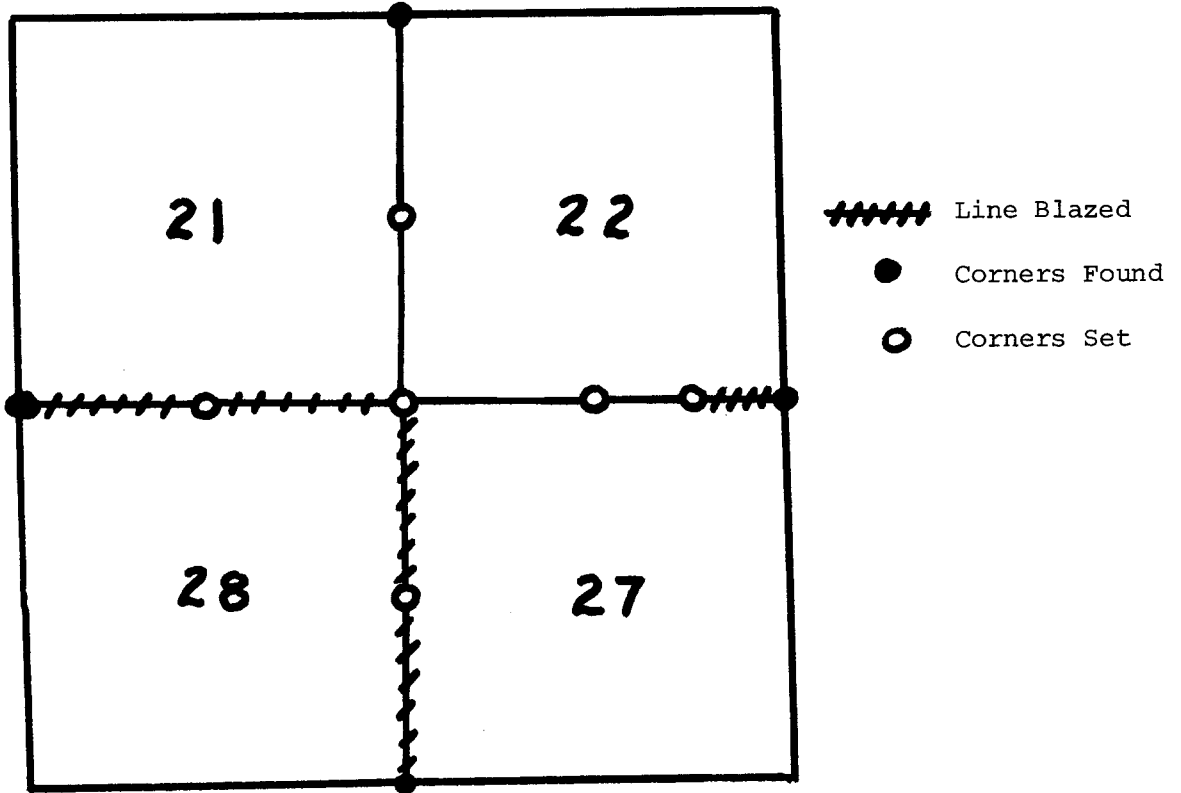
REGISTERED  
OREGON  
LAND SURVEYOR

*Craig L. Templin*

JULY 17, 1970  
CRAIG L. TEMPLIN  
938

WEYERHAEUSER COMPANY SURVEY

SECTIONS 21,22,27,28 T 25S, R 8W, W.M.  
Douglas County, Oregon



A transit and slope chain survey made for Weyerhaeuser Company  
by Craig L. Templin, Oregon Land Surveyor. Reg. No. 938

Helpers: Harold A. Lester  
Charles Parks  
Thomas M. Rush

Date Completed: October 15, 1970



FILED  
RECEIVED

OCT 21 1970

COUNTY SURVEYOR  
DOUGLAS COUNTY, ORE.

55/177 b

The purpose of this survey was to establish the section line between Sections 27 and 28. After a diligent search for the section corner common to Sections 21, 22, 27 and 28, it was not found and considered lost. The quarter corners to the North, South, East, and West were also searched for, not found, and considered lost.

The following corners were found as set by the County Surveyor's Office and used as control:

Section corner common to Sections 27, 28, 33 and 34  
Section corner common to Sections 22, 23, 26 and 27  
Section corner common to Sections 21 and 28  
Section corner common to Sections 15, 16, 21 and 22

Closed traverses were run for the determination of true lines.

Bearings were based on solar observation.

The compass rule was used in balancing the closed traverses.

A closure of not less than 1 in 4,000 was obtained.

The position of the lost section corner was calculated by double proportionate measurement. The positions of the lost quarter corners and the East 1/16th corner between Sections 22 and 27 were calculated by single proportionate measurement.

FILED  
RECEIVED

DEC 21 1970

COUNTY SURVEYOR  
DOUGLAS COUNTY, ORE.

55/1.77

SETTING CORNERS AND DETERMINATION OF TRUE LINE

The corners were set by staff compass and chain from the nearest control hub using a declination of twenty degrees. A 1-1/2" iron pipe with a brass cap was set for each corner. The corner references were set with staff compass and chain. Bearing trees were scribed and marked with metal tags and a "W" nail at the base of each tree.

Offsets in the cardinal direction were calculated from each control hub to the true line. On the property lines the true line was marked by blazing trees on both sides of the line, marking trees on adjacent ownership with 2" x 8" aluminum strips, and hanging red and white striped plastic ribbon on the true line.

CORNER DATA

Section Corner common to Sections 21, 22, 27 and 28:

Set a 1-1/2" x 3' Iron Pipe with Brass Cap.

Referenced & Scribed:

12" hemlock	N 53 E	69.1 ft.	(Mkd S 22 T 25 S R 8 W BT)
10" hemlock	N 69 W	47.4 ft.	(Mkd S 21 T 25 S R 8 W BT)
8" hemlock	S 66 E	22.5 ft.	(Mkd S 27 T 25 S R 8 W BT)
12" fir	S 86 W	17.4 ft.	(Mkd S 28 T 25 S R 8 W BT)



0 #74

1/4 Corner common to Sections 21 and 22:

Set a 1-1/2" x 3' Iron Pipe with Brass Cap.

Referenced & Scribed:

6" hemlock	N 78-1/2	1.5 ft.	(Mkd 1/4 S BT)
5" hemlock	S 32 W	21.9 ft.	" " " "



#75

1/4 Corner common to Sections 21 and 28:

Set a 1-1/2" x 3' Iron Pipe with Brass Cap.

Referenced & scribed:

24" hemlock	N 12	30.3 ft.	(Mkd 1/4 S BT)
4" fir	S 71	26.3 ft.	(Mkd 1/4 S BT)



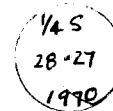
0 #76

1/4 Corner common to Sections 27 and 28:

Set a 1-1/2" x 3' Iron Pipe with Brass Cap.

Referenced & scribed:

6" fir	S E	30.3 ft.	(Mkd 1/4 S BT)
4" fir	S 7 W	26.3 ft.	" " " "



0 #77

FILED RECEIVED

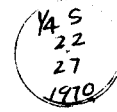
DEC 21 1970

DUNY SURVEYOR  
DOUGLAS COUNTY, ORE.

1/4 Corner common to Sections 22 and 27:

Set a 1-1/2" x 3' Iron Pipe with Brass Cap  
Referenced & Scribed:

6" fir	N 36 1/2 E	8.5 ft.
6" fir	S 61 W	6.7 ft.



(Mkd 1/4 S BT)  
" " " "

#78

E 1/16 Corner for Sections 22 and 27:

Set a 1-1/2" x 3' Iron Pipe with Brass Cap  
Referenced & Scribed:

15" fir	N 33 E	26.3 ft.
30" fir	S 39 W	16.2 ft.



(Mkd 1/4 S BT)

1/16

FILED  
RECEIVED

DEC 21 1970

COUNTY SURVEYOR  
DOUGLAS COUNTY, ORE.

55/177E