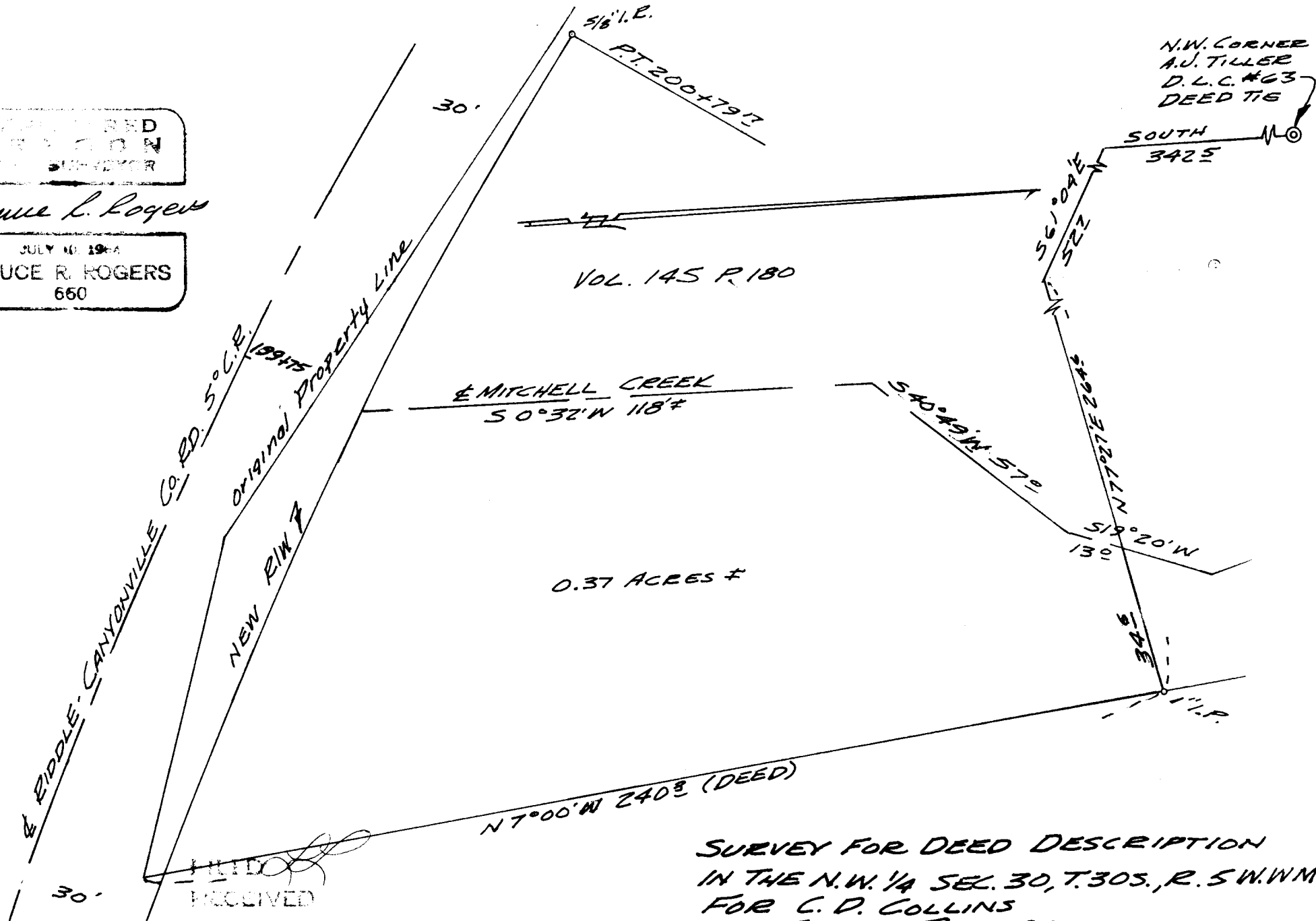


REGISTERED
SURVEYOR

Bruce R. Rogers

JULY 10, 1964
BRUCE R. ROGERS
650



N.W. CORNER
A.J. TILLER
D.L.C. #63
DEED T16

FILED
RECEIVED

DEC 8 1970

COUNTY SURVEYOR
WASHELENS COUNTY, ORE.

SURVEY FOR DEED DESCRIPTION
IN THE N.W. 1/4 SEC. 30, T. 30S., R. 5W.W.M.
FOR C. D. COLLINS
BY BRUCE ROGERS
DEC., 1970

1" = 30'

COUNTY SURVEYORS FILE DATA
DO NOT REMOVE FROM OFFICE

C.S. File No. 55/176-2