

**COUNTY SURVEYORS FILE DATA  
DO NOT REMOVE FROM OFFICE**

SURVEY IN SECTION 16, T. 27 S., R. 6 W., W. M.  
 SURVEYED FOR VICTOR D. MOODY  
 SURVEYED BY R. H. GEE  
 NOVEMBER, 1970 SCALE 1" = 100'  
 BEARINGS BASED ON C.S. FILE M 23-32

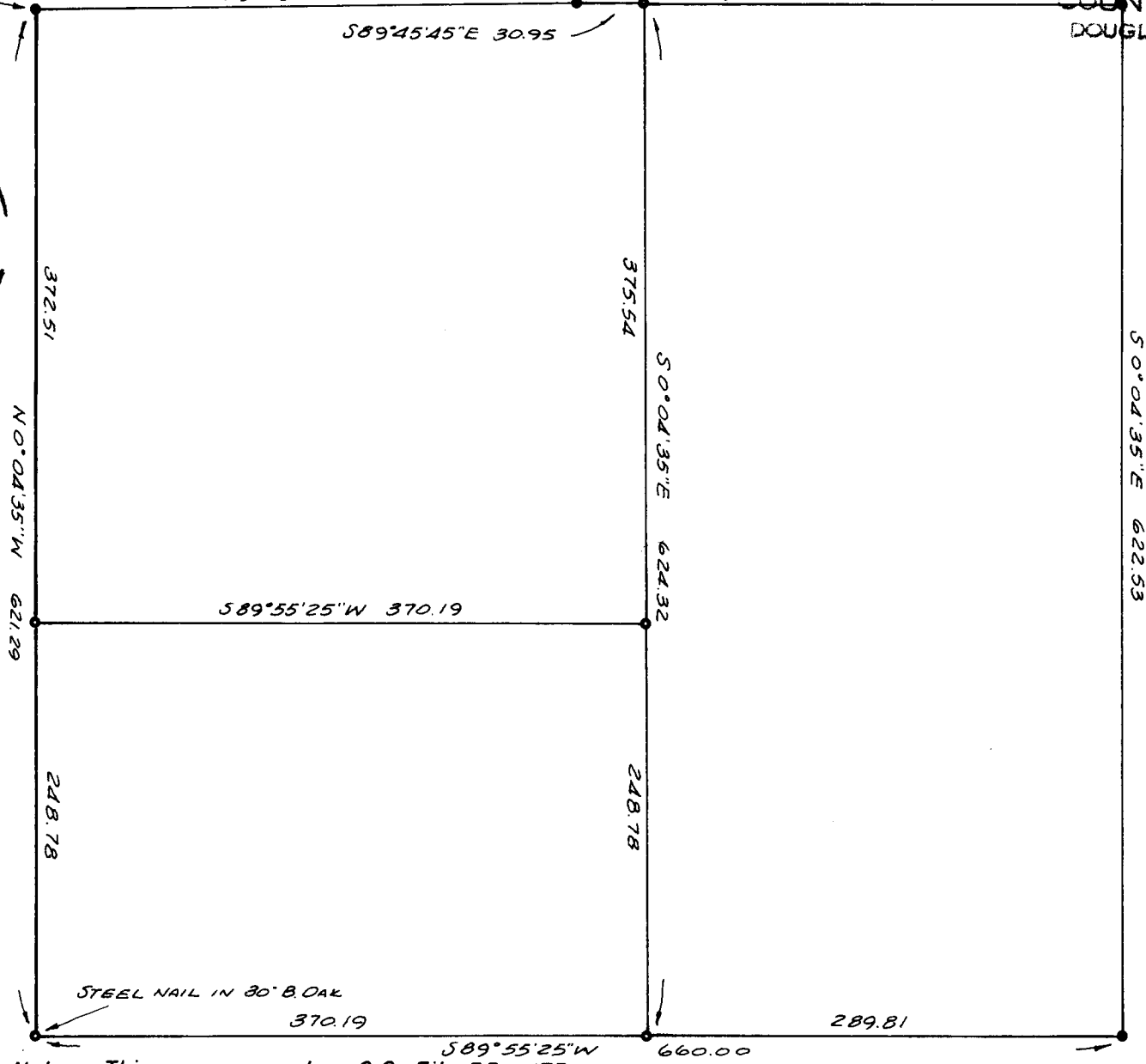
FILED *[Signature]*  
 RECEIVED

DEC 26 1970

INITIAL POINT  
 SW COR SEC. 16, T. 27 S., R. 6 W., W. M.  
 SOUTH 2,979.22  
 WEST 1,647.20

• DENOTES 5/8" I.R. SET • DENOTES 5/8" I.R. FOUND  
 N 89° 23' W 339.26 S 89° 45' 45" E 289.80 (Rec. 293.24)

COUNTY SURVEYOR  
 DOUGLAS COUNTY, ORE.



Note - This map supersedes C.S. File 55 - 173