

SURVEY IN SECTION 16, T. 27 S., R. 6 W., W.M.
 SURVEYED FOR VICTOR D. MOODY
 SURVEYED BY R. H. GEE
 NOVEMBER, 1970 SCALE 1" = 100'

INITIAL POINT
 NE COR SEC. 16, T. 27 S., R. 6 W., W.M.
 SOUTH 2979.22 & WEST 1647.20

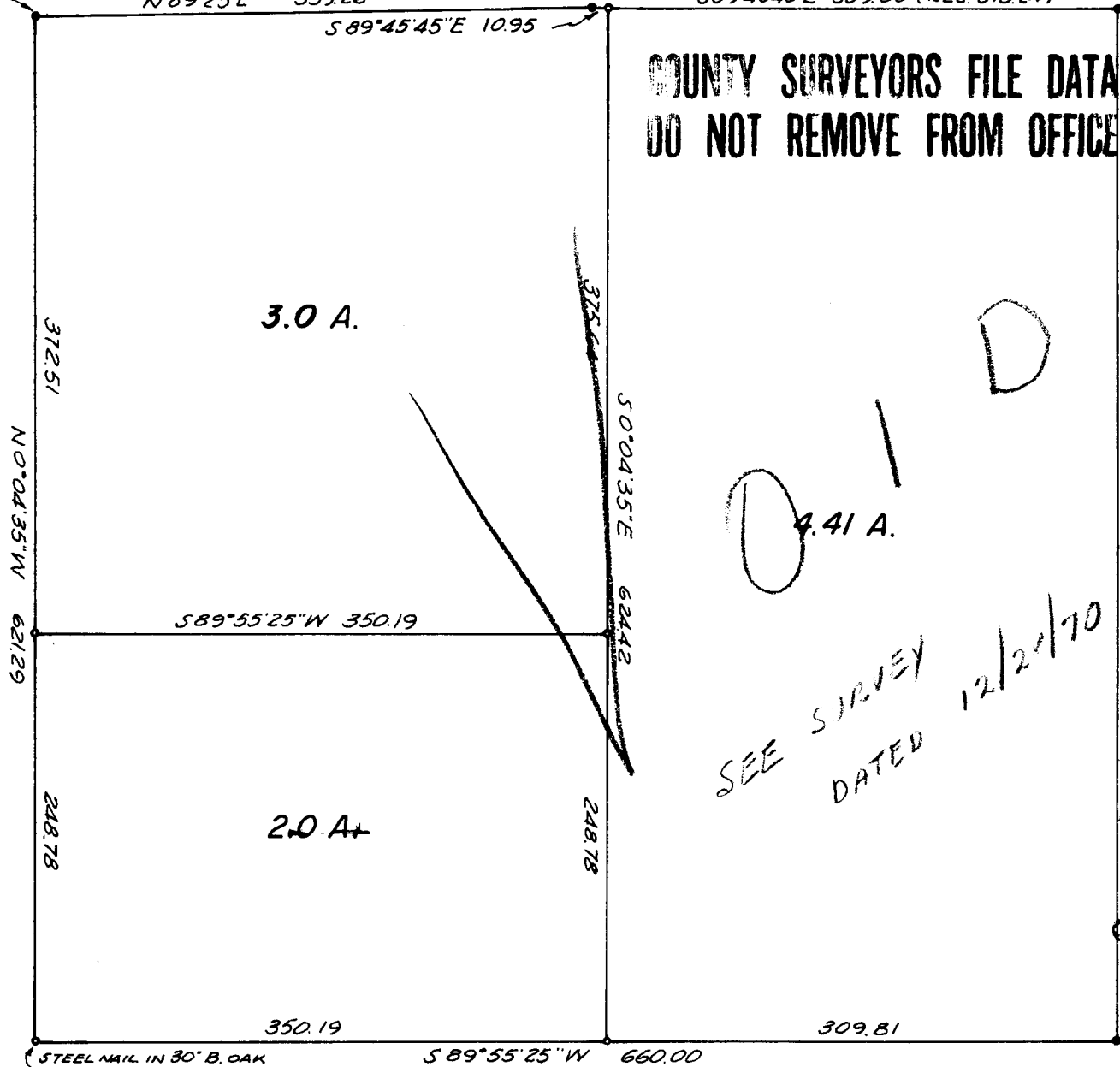
BEARINGS BASED ON C.S. MAP FILE M-23-32 M 34-37

• DENOTES 5/8" I.R. FOUND • DENOTES 5/8" I.R. SET



N 89° 23' E 339.26
 S 89° 45' 45" E 10.95
 S 89° 45' 45" E 309.80 (Rec. 313.24)

COUNTY SURVEYORS FILE DATA
 DO NOT REMOVE FROM OFFICE



S 0° 04' 35" E 622.53

FILED
 RECEIVED

NOV 25 1970

COUNTY SURVEYOR
 DOUGLAS COUNTY, ORE.

STEEL NAIL IN 30" B. OAK
 S 89° 55' 25" W 660.00