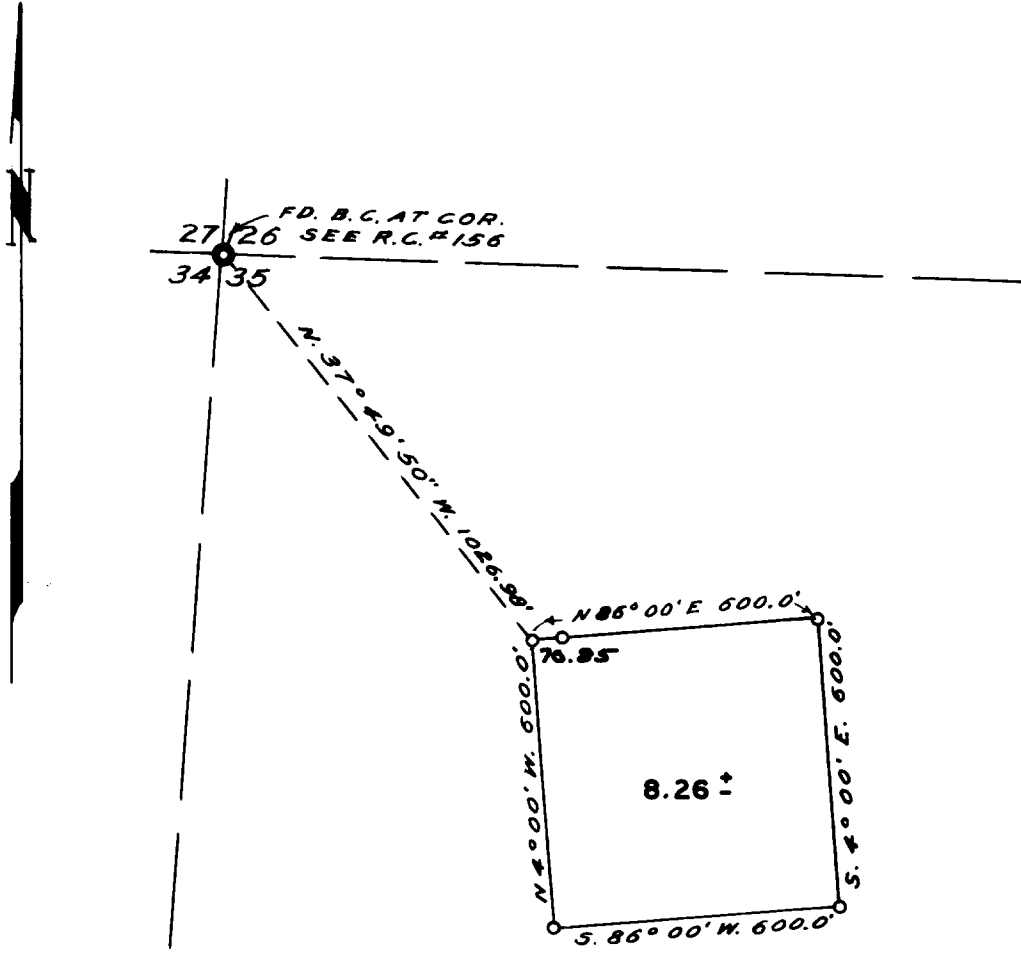


NOTE: Bearings are based on  
Mag. with a var. of 20°00'  
o = 3/4" I. Rod Set

FILED *LR*  
RECEIVED

NOV 24 1970

COUNTY SURVEYOR  
DOUGLAS COUNTY, OREGON



**COUNTY SURVEYORS FILE DATA  
DO NOT REMOVE FROM OFFICE**

SURVEY FOR DEED DESCRIPTION SECTION 35 T29SR5W. W.M.

SURVEYED BY  
BRUCE R. ROGERS

NOV. 1970

SURVEYED FOR STEVEN E. HALL

REGISTERED  
OREGON  
LAND SURVEYOR

*Bruce R. Rogers*

JULY 10, 1964  
BRUCE R. ROGERS  
660

SCALE 1" = 400'