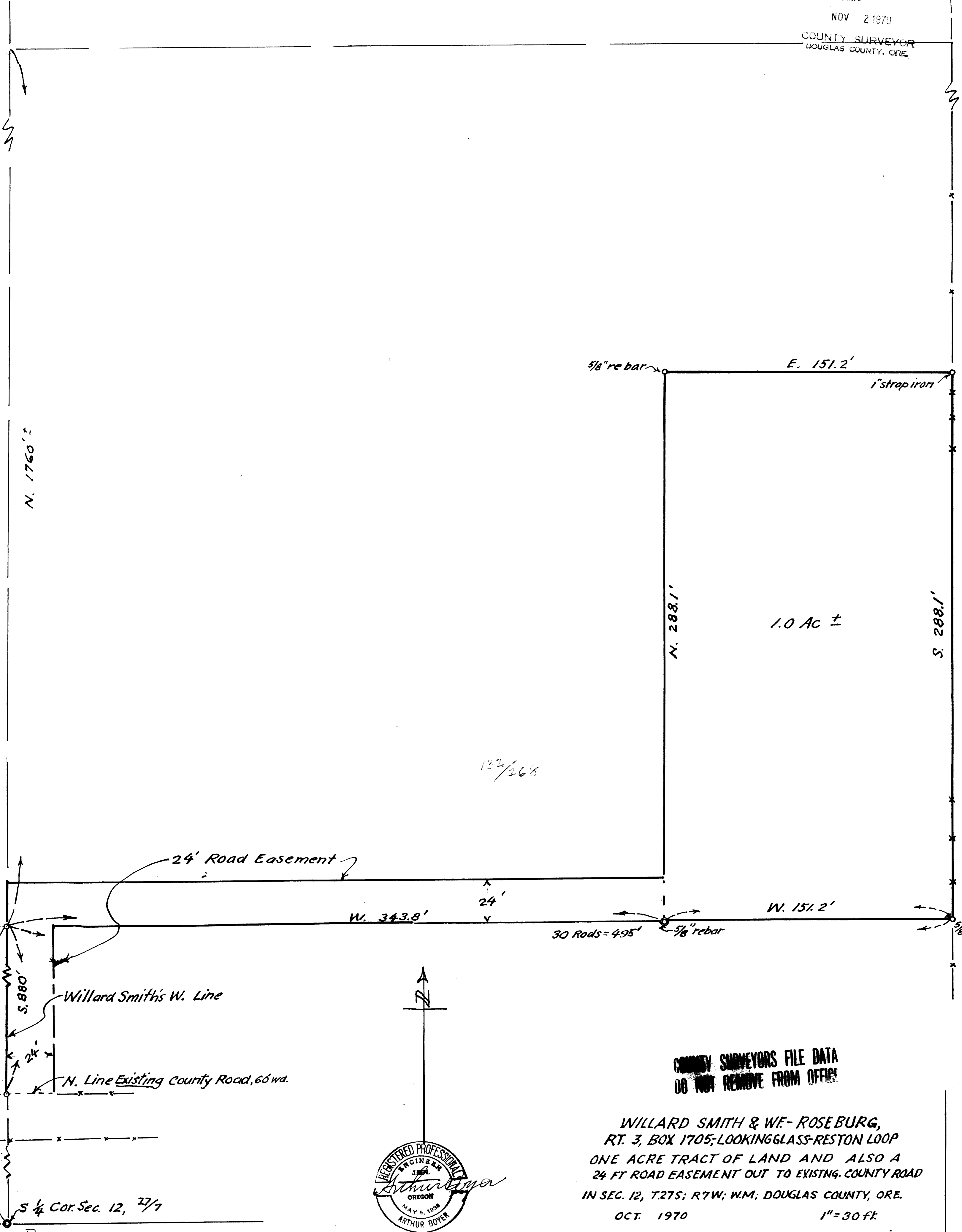


FILED
RECEIVED

NOV 2 1970

COUNTY SURVEYOR
DOUGLAS COUNTY, ORE.



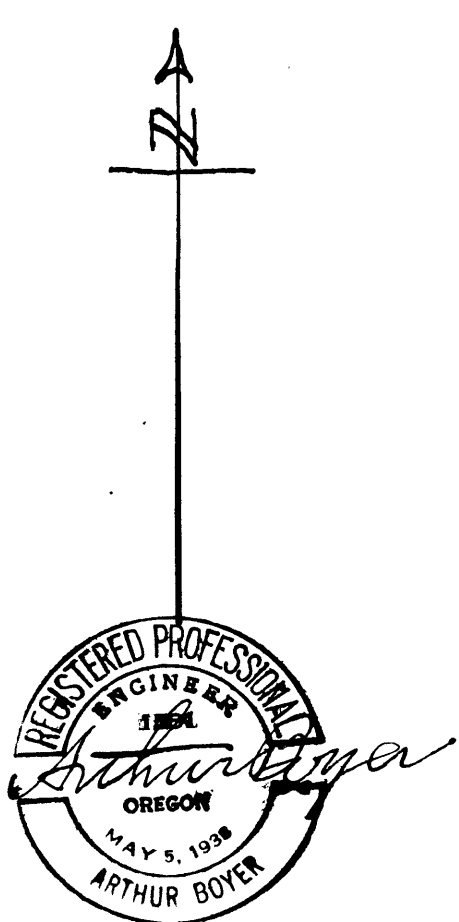
132/268

**COUNTY SURVEYORS FILE DATA
DO NOT REMOVE FROM OFFICE**

WILLARD SMITH & WF- ROSEBURG,
RT. 3, BOX 1705; LOOKINGGLASS-RESTON LOOP
ONE ACRE TRACT OF LAND AND ALSO A
24 FT ROAD EASEMENT OUT TO EXISTING COUNTY ROAD
IN SEC. 12, T.27S; R.7W; W.M; DOUGLAS COUNTY, ORE.

OCT. 1970

1" = 30 FT.

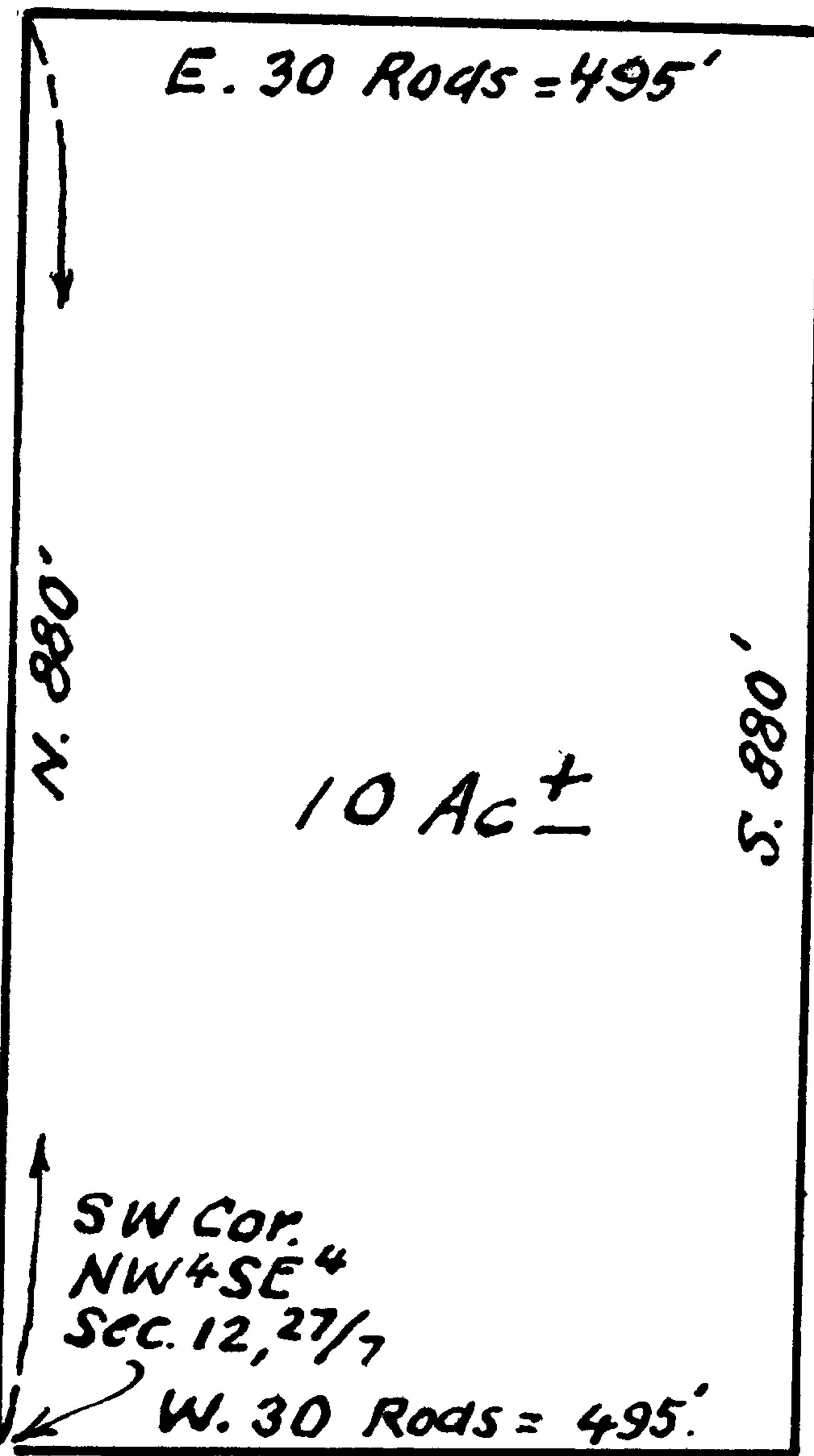


RESET SEE C.S. FILE 55/170

FILED
RECEIVED

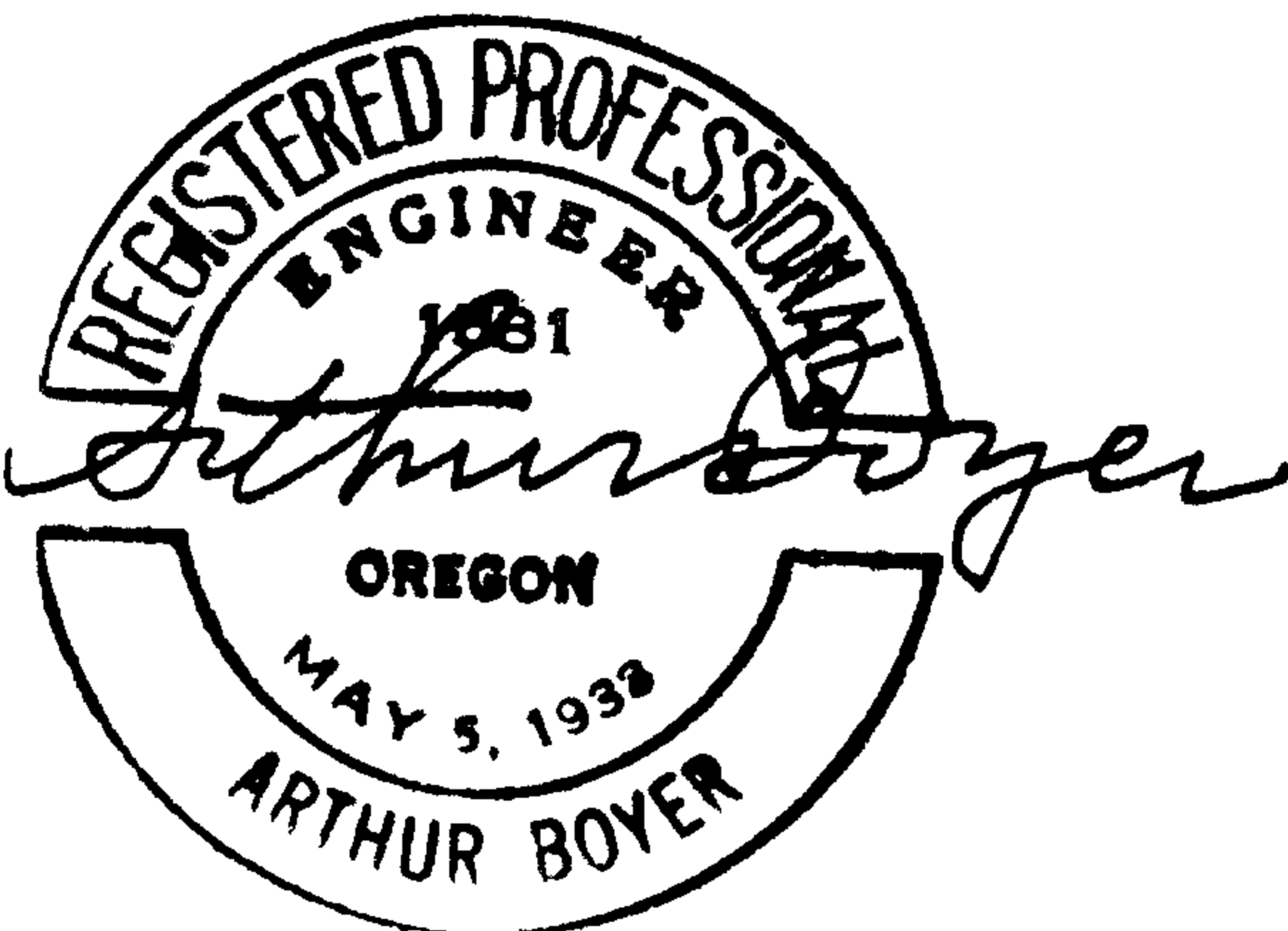
NOV 30 1970

COUNTY SURVEYOR
DOUGLAS COUNTY, ORE.



Existing County Road, (Lookingglass-Reston Loop.)
Umpqua Basin Water Dist. Pipe Line

COUNTY SURVEYORS FILE DATA
DO NOT REMOVE FROM OFFICE



WILLARD SMITH & WIFE
MELROSE PROPERTY
ON LOOKINGGLASS-RESTON LOOP ROAD
IN NW 1/4 SE 1/4 SEC. 12, T27S; R7W; W.M.
DOUGLAS COUNTY, ORE.
OCT. 1970
1" = 200 ft.

