

SURVEY IN SEC. 4, T255, R5W, W.M.  
 Surveyed For Kenneth Hopkins  
 Surveyed By Victor M. McLind  
 October, 1970

FILED   
 RECEIVED

OCT 30 1970

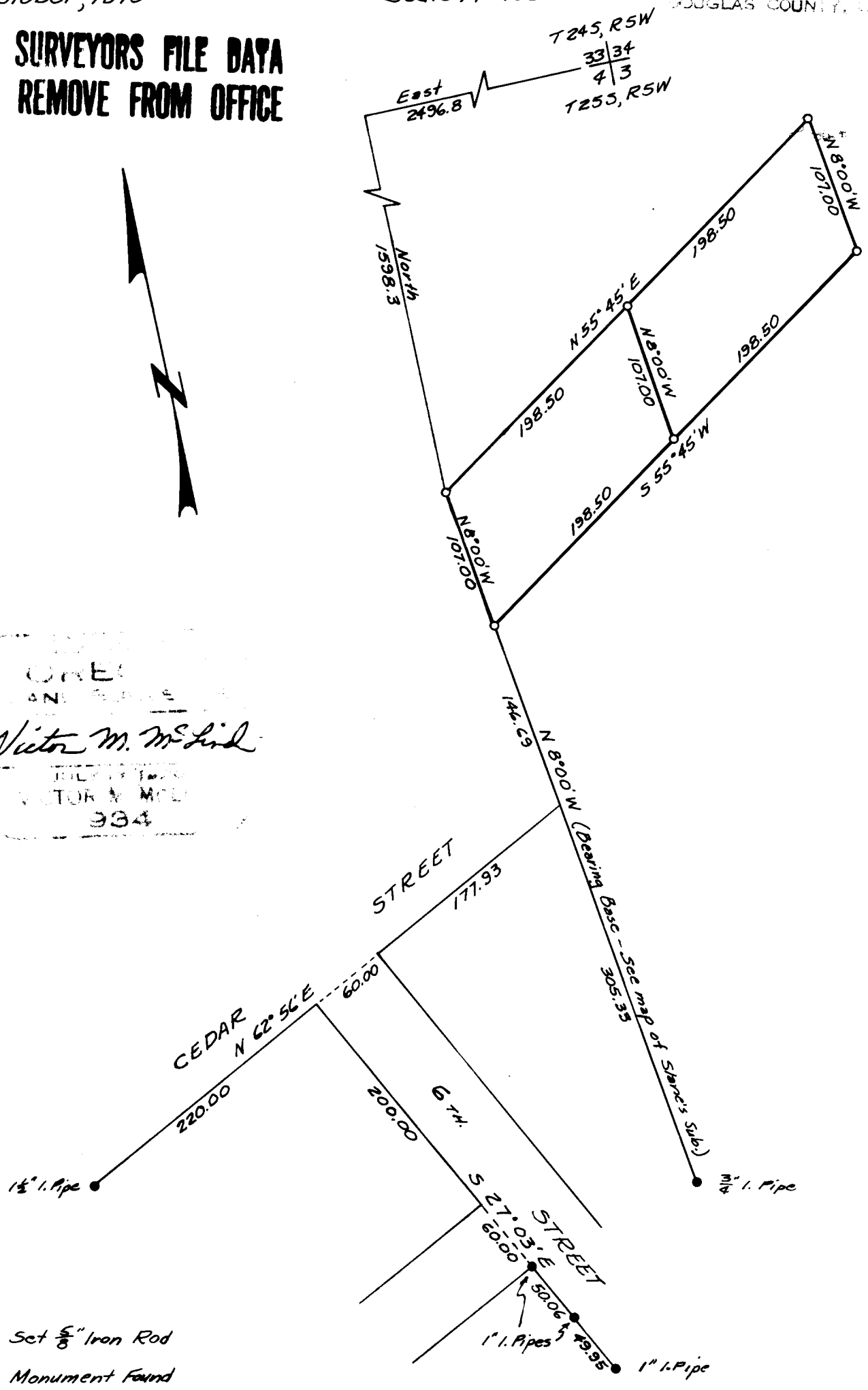
COUNTY SURVEYOR  
 DOUGLAS COUNTY, ORE.

Scale: 1"=100'

**COUNTY SURVEYORS FILE DATA  
 DO NOT REMOVE FROM OFFICE**



OREGON  
 VICTOR M. MCLIND  
 934



- Set 5/8" Iron Rod
- Monument Found